



in partnership with

A digital display screen mounted on a wall, showing the TOAlert interface. The screen has a black border and a white background with an orange accent at the bottom. It displays the TOAlert logo, the date and time, weather information, and a description of the communication platform. A large analog clock is overlaid on the right side of the screen.

toalert)))
Wed Oct 25, 2021
13°C ☀️ PM

Communication Platform
TOAlert delivers emergency communications, daily messaging, synchronized time and weather alerts with one easy-to-manage solution

A large analog clock with a white face, black numbers, and black hands. The clock is mounted on the right side of the digital display screen. The TOA logo is visible in the center of the clock face.

Emergency Communication System.

Innovation for a Safer World.



Mon, Mar 22, 2021
43°F ☀ PM

Instant Communication

- Safety alerts as they happen
- Synchronized time
- Event reminders and audio alerts
- Weather alerts by county



One system to manage your critical communication.

EverAlert® from American Time is an advanced, powerful communication system that delivers better communication and productivity through daily messaging, emergency alerts and synchronized clocks.



Synchronized Clocks

Ensure everyone is on the same, precise time with synchronized clocks. Features such as countdown timers and buzzers keep meetings, classes, and shift changes running smoothly.

Digital Signage and Messaging

Improve your building's communication with clear, instant messages. Customize messages and use audio/visual cues to keep everyone informed — even by department or by room.

Emergency Notifications

Keep critical communications clear and timely during threats. Automatic or custom messages instantly inform everyone how to stay safe. Integrate with other building systems like fire alarms, P.A., lockdown and even weather alerts.



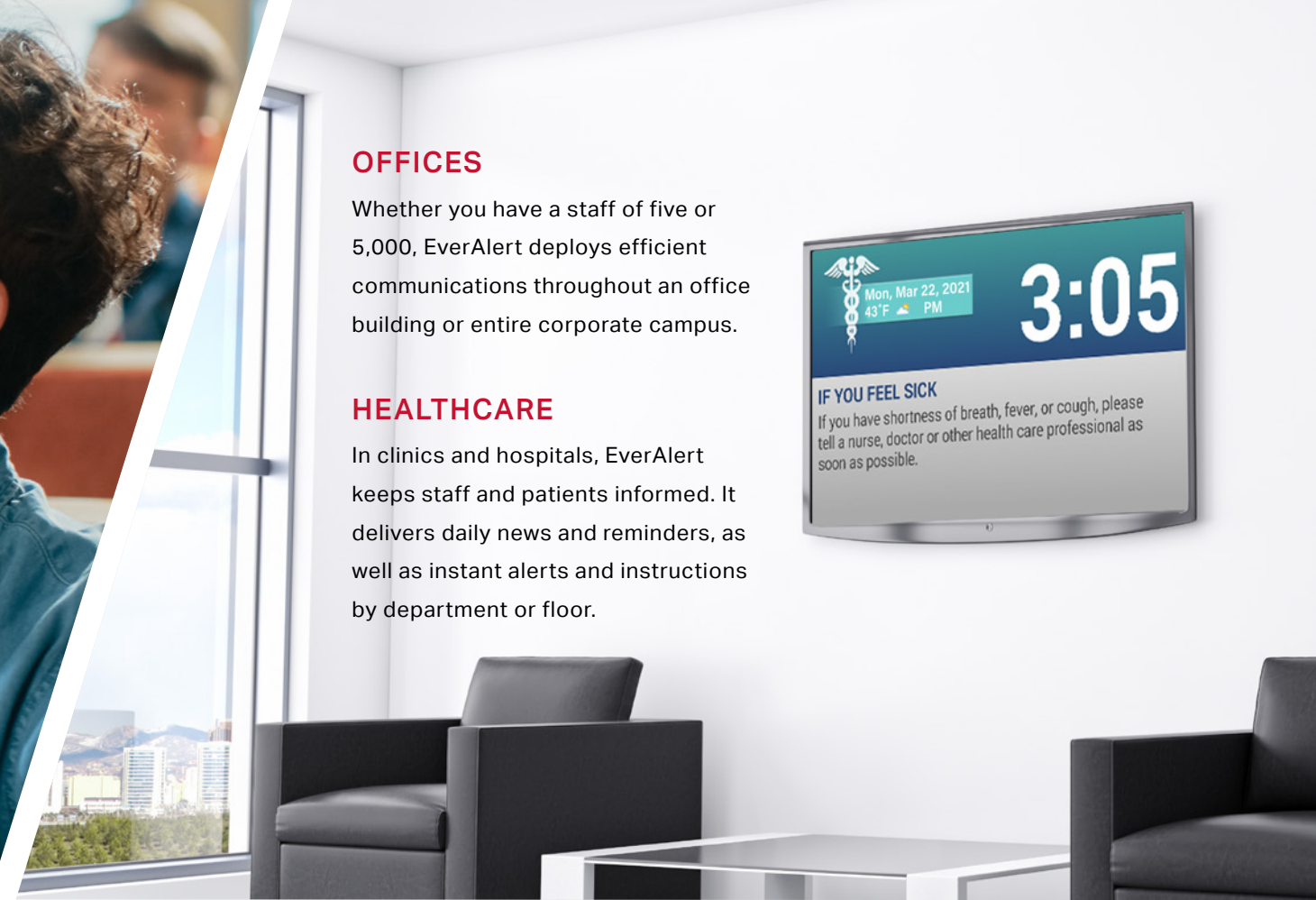
EDUCATION

The EverAlert system saves schools time, money, and complexity when managing critical communications and safety systems.



OFFICES

Whether you have a staff of five or 5,000, EverAlert deploys efficient communications throughout an office building or entire corporate campus.



HEALTHCARE

In clinics and hospitals, EverAlert keeps staff and patients informed. It delivers daily news and reminders, as well as instant alerts and instructions by department or floor.



Who Uses EverAlert?

The EverAlert communications system keeps people safe and secure, while saving time, money and complexity when managing organizational communications. It is the single solution that improves safety, connection and efficiency throughout a building or campus.

Many industries have discovered the benefits of daily messaging, emergency notifications and synchronized time.



LARGE FACILITIES

Deliver instant, clear news and emergency notifications with audio alerts. Perfect for large settings such as warehouses, manufacturing facilities, and distribution centers that can have higher levels of environmental noise.

Audio Alarms for
Immediate Response



Keep Classes, Meetings and Shifts on Time

Consolidate clock, bells, alarms, and messaging systems into one easy technology. Streamline the management of many building communication systems!

Quickly Alert for Better Security

During a threat or drill, deliver clear and timely instructions by room, grade or department. Visual and audio alerts are perfect for noisy environments or those with special hearing needs.

“The ability to combine bells, clocks, signage, emergency notifications, and safety was the golden ticket for me.”

- AUSTIN S., IT DIRECTOR

Clearly Inform with News and Messages

Display messages about news, meetings and events. Customize by department, grade or floor. Get the right message to the right audience.

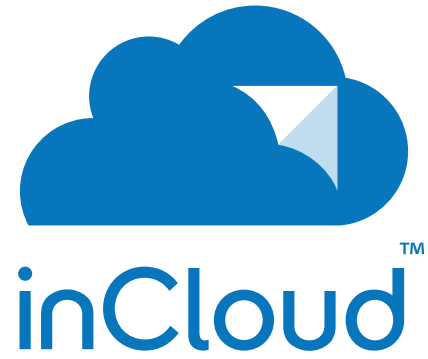
Integrate Other Systems for Maximum Efficiency

Integrate TOAlert messages with your existing building systems, like fire and lockdown. When an alarm is triggered, instantly display messages within your building and notify authorities.



Visual Cues for Noisy
Environments





EverAlert is Powered by the inCloud Management Portal

Daily updates and announcements should be intuitive. Emergency alerts need to be immediate. The inCloud management portal allows your team to create, control, and schedule the messages, news and emergency alerts that are critical to your organization.

Set-Up, Manage and Monitor EverAlert—Easily

The easy-to-use inCloud management portal lets you efficiently manage all EverAlert displays to keep your building running smoothly.

- Schedule and deliver daily news and emergency information to your whole organization
- Send custom messages by room, floor, department, grade, or any other segment



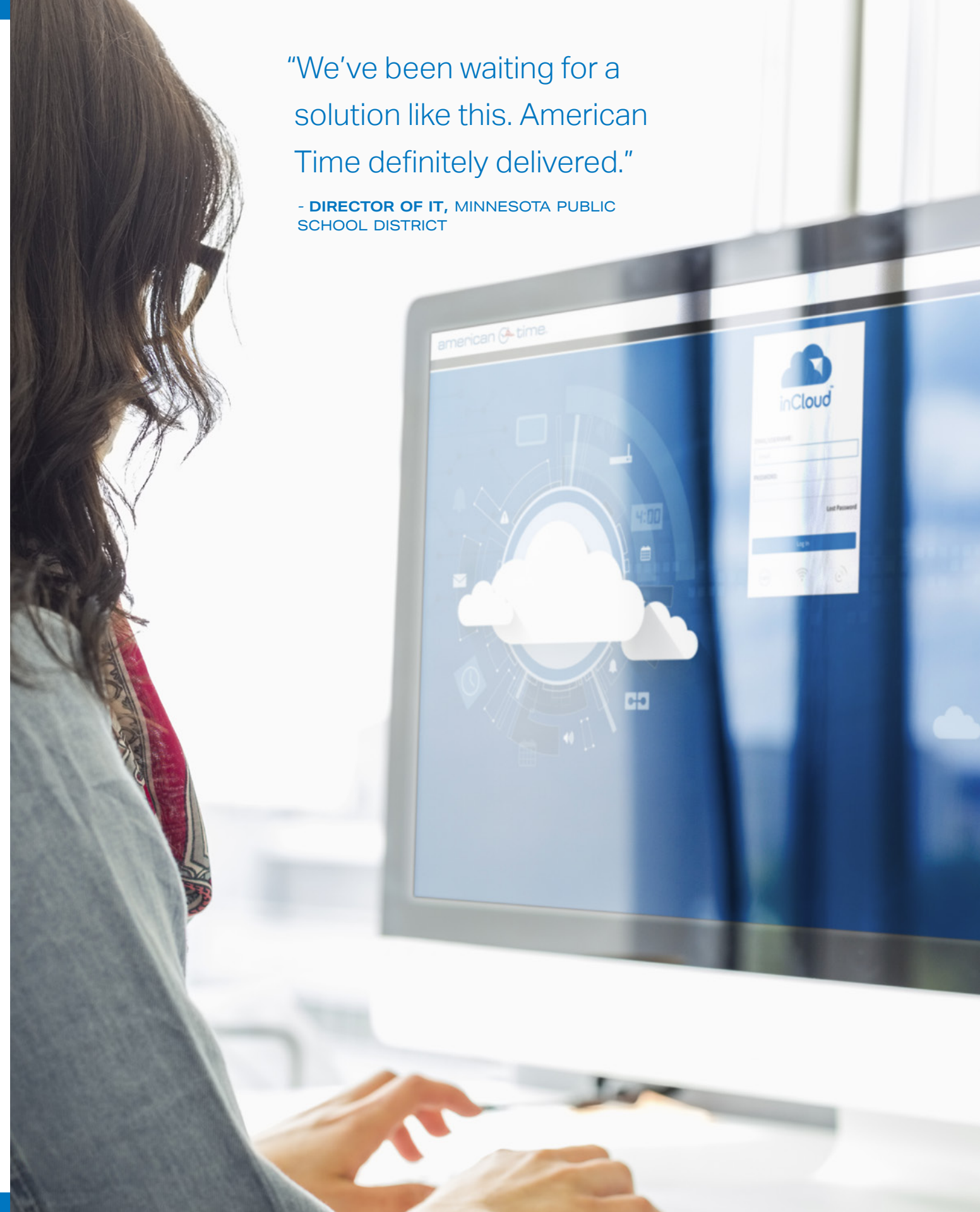
inCloud: In-Depth

Proactively monitor EverAlert to maximize uptime, use and efficiency.

- Manage all users, notification and action audits, and license status
- Create and schedule messages
- Use pre-loaded template messages to save time
- Deploy alarms on demand
- Schedule bells, messages, and audio alerts
- View detailed reports to track system activity
- Receive automated device status reports
- Assign messaging capabilities to room or department leads for even easier communication
- Consolidate management of other American Time products, including Wi-Fi and PoE clock systems

“We’ve been waiting for a solution like this. American Time definitely delivered.”

- DIRECTOR OF IT, MINNESOTA PUBLIC SCHOOL DISTRICT



EverAlert Options to Fit Your Technology and Needs

An alert system should be easy to use. It should work with the technology you have or allow you to easily create and integrate a new system. American Time offers options for building, connecting and extending EverAlert technology in your building or campus.



DIGITAL / ANALOG

THE DYNAMIC DISPLAY SYSTEM

Easy-to-read displays communicate EverAlert information. A variety of screen options include traditional clock face (analog) or digital clock display; banner or full-screen messaging formats; and the ability to mount displays with landscape or portrait orientation. EverAlert information is communicated via Ethernet or Wi-Fi network.

DYNAMIC VIEW FOR EXISTING SCREENS

Dynamic View allows you to display EverAlert content on your existing digital displays through an HDMI input. Perfect for communicating news, alerts, and precise time in conference rooms, lunchrooms and large common areas.

THIRD-PARTY ALARM INTEGRATIONS

Bridge communications between third-party system alarms/alerts and EverAlert. When an alarm is activated from a lockdown, weather, medical emergency or other event, your pre-loaded or custom message appears on EverAlert for instant communication throughout a building.





EverAlert Dynamic Display



Specifications

EverAlert Dynamic Display, part number EADV2

Dimensions: master shipping carton, 2 displays	38" L, 8 7/8" W, 18 1/2" H
Weight: master shipping carton, two displays	37lbs
Weight: single (device only)	8lbs
Dimensions: single (device only)	20 1/4" L, 1 3/8" W, 12 1/16" H
Dimensions: display screen diagonal	21.5"
Lighting: screen	LCD with LED backlight
Resolution: display screen	1920 x 1080
Mounting formats	Landscape (horizontal) or portrait (vertical)
Internal speakers	2 each at 2W
USB 2.0 ports	2
External speaker output jack	3.5mm
Wired LAN connectivity	10/100M, RJ45 connector
Wireless LAN connectivity	802.11b/g/n (2.4GHz)
USB provisioning	USB drive with AES encryption
Wired provisioning	LAN/DHCP Web portal on network connection
Time synchronization support	2 static IP or DNS pool SNTP servers
Clock battery backup for power outages	CR1220 lithium
Maximum relative humidity	85%
Operating temperature	0°C - 40°C
Input voltage to power supply	100-240VAC, 50/60Hz

Output voltage from power supply	12VDC
Energy efficiency	Level VI
Power Consumption	25W (average), 40W (maximum), 20W (sleep)
Certifications	RoHS, CE/FCC, PSU w/UL

FEATURES

- Smart 22" class HD screen with built-in speakers
- EverAlert supports a virtually unlimited number of displays
- Display functions in either landscape or portrait orientation
- Communicates to the **inCloud Management Portal** through wired Ethernet or Wi-Fi network
- Resumes normal operation without intervention after a temporary power interruption
- Operator adjustable or scheduled screen brightness
- VESA mounting for easy installation
- (Optional) Custom mounting bracket with power supply holder
- Scheduled sleep mode for energy conservation
- **1 year warranty**



EverAlert Dynamic View



Specifications

EverAlert Dynamic View, part number EABOX

Dimensions, (device only)	7.5"L x 3.75"H x .75"W	Wired provisioning	LAN/DHCP Web portal on network connection
Weight (device only)	1.1 lbs	Time synchronization support	2 static IP or DNS pool SNTP servers
Dimensions, master shipping carton, one Dynamic View.	11.25"L x 3"H x 9.25"W	Clock battery backup for power outages	CR1220 lithium
Weight, master shipping carton, one Dynamic View	2.64 lbs	Relative humidity	85% maximum, non-condensing
Resolution, display screen	1920 x 1080	Operating temperature	32 °F – 104 °F
Displayed format	Landscape (horizontal)	Input voltage to power supply	100-240VAC, 50/60Hz
USB ports	2	Output voltage from power supply	12VDC
External speaker output jack	3.5mm	Energy efficiency	Level VI
Wired LAN connectivity	10/100M, RJ45 connector	Power consumption	9.5W (average), 14.5W (maximum)
Wireless LAN connectivity	802.11b/g/n (2.4GHz)connector	Certifications	RoHS, CE/FCC, PSU with UL
USB provisioning	USB drive with AES encryption		

FEATURES

- HDMI connection to TV/monitors
- EverAlert daily messaging, emergency notifications, and synchronized clocks
- Supports HD, large-format resolutions
- Landscape display orientation
- Communicates to the inCloud Management Portal through wired Ethernet or Wi-Fi network
- Wired LAN and wireless LAN connectivity
- Slim profile for easy mounting
- 1 year warranty

EverAlert Integrator



Specifications

EverAlert Integrator, part number EAIV3

Wired LAN connectivity	10/100M, RJ45 connector
Monitored switch style	Normally-open dry contact
Monitored switch wiring length	25ft maximum
Number of monitored switches	2 per Integrator
Number of output switches	1 per Integrator
Number of Integrators per EverAlert system	5 Integrators per system
Input voltage to power supply	100-240VAC, 50/60Hz
Output voltage from power supply	9VDC

An EverAlert Integrator bridges communication between the EverAlert system and other building alarm systems.

The Integrator contains two general-purpose inputs that connect to contact closure switches. Typically, the Integrator is connected to an alarm panel that, when triggered, will show an alarm message on all active EverAlert Displays and send a text or email to key personnel.

Multiple Integrators can be used with an EverAlert system to increase the number of alarms utilized.

FEATURES

- Integrate with third party systems for automatic alerting, such as fire and lockdown
- Normally-open (dry contact) inputs for fast, reliable integrations
- Integrators can be configured to monitor fire alarm panels, switches, or any other normally open switches used for emergency alarm purposes
- 1 year warranty

N-8000 Series IP Network Intercom System



Specifications

Dimensions, (excluding curl cord)	8.19"L x 2.78"H x 5.83"W
Weight (device only)	1.7 lbs
Audio Frequency Range	300 Hz - 7 kHz
Speech Method	Hands-free or handset conversation
Hands-free	Speaker: 5.7 cm (2.24) cone-type Microphone: Omni-directional electret condenser microphone
Handset	Receive path: Dynamic type, Send path: Electret condenser microphone
Headset Terminal	Speaker: 150 Ω, φ3.5 mm (0.14) mini jack" Microphone: -49 dB*, φ3.5 mm (0.14) mini jack"
External Speaker Terminal	Maximum output 0.5 W, 8 Ω, screwless connector (2 pins)
Display	LCD: Alphanumeric characters (16 characters x 2 lines)

N-8000 IP Multi-functional Master Station, TOA part number N-8600MS

Indication	Status lamp
Installation Method	Desk/Surface mounted master station (When mounting to the wall, use the optional YC-280.)
Operating temperature	32 °F - 122 °F
Operating Humidity	90% RH or less (no condensation)
Power source	Power supply device that complies with IEEE802.3af standard or 12 V DC (supplied from the AC adapter (option))
Power consumption	AC adapter (12 V DC): 2.5 W PoE (48 V DC): 3 W
Finish	Body, Handset: ABS resin, gray
Accessory	CD (for PC setting, maintenance use) ...1
Option	Wall mounting bracket: YC-280, AC adapter: AD-1210P, AD-1215P

FEATURES

- System configuration by LAN with intuitive software
- Master-to-Master and Master-to-Sub station communication
- Choice of four wiring configurations: CAT5, 2-core shielded cables, 2 wires or 4 wires
- Integration with access control, voice alarm, CCTV and other such systems
- Time correction
- Operation and stream logs
- System diagnosis

VM-3000 Series Voice Evacuation & Mass Notification System



Specifications

Dimensions	18.98"L x 5.22"H x 16.98"W
Weight (device only)	36.38 lbs
Distortion	Under 0.7% (at rated output, 1 kHz)
Audio Input/Output Characteristic	Sampling frequency 48 kHz A/D D/A CONVERTER: 24 BIT
Frequency Response	50 Hz - 20 kHz, ±3 dB (at 1/3 rated output), 800 Hz - 2.8 kHz (according to UL2572); 400 Hz - 4 kHz (according to CAN/ULC-S576)
Network I/F	10BASE-T/100BASE-TX (selectable by automatic negotiation), RJ45 female connector; Maximum distance: 100 m between this unit and a switching hub; Link cable: Category 5 Shielded Twisted-Pair straight cable (CAT5-STP)
22 V DC Output	22 V DC Special Application, Maximum feeding current 0.3 A (for RM-200M only)

VM-3000 Voice Alarm System Amplifier, TOA part number VM-3240VA AMQ

Option	Input transformer: IT-450
DS Link	Connecting the VX-2000DS, RJ45 female connector; Link cable: Category 5 Shielded Twisted-Pair straight cable (CAT5-STP)
Operating temperature	32 °F - 120 °F
Operating Humidity	5% to 95% RH or less (no condensation)
Power source	120 V AC, 60 Hz
Power consumption	690 VA (at rated output), 260 W (According to UL60065), 63 W (at no signal)
Finish	Panel: Aluminum, hair-line, black; Case: Surface-treated steel plate, black, paint
Accessories	AC power cord (2m) x 1, Emergency microphone x 1, Plastic foot x 4, Plastic foot mounting screw x 4, Removable terminal plug (14 pins) x 3, Removable terminal plug (16 pins) x 1, Link cable (3m) x 2, Setting software (CD) x 1
UL Certified	UL 2572

FEATURES

- Max. 4 MIC/LINE inputs
- 2 BGM inputs
- Up to 4 Remote Microphones connectable (max. 2 Fireman's Microphones)
- Max. 60 assignable speaker zone outputs (6 zones per amplifier)
- Volume setting possible for each zone
- Digital audio processed & controlled
- Full digital audio mixing (DSP)
- Built-in high quality electronic voice message
- Intuitive configuration
- Zone setting, priority setting, failure detection setting by dedicated PC software
- LCD display of current status and configuration setting of system units.



TOA Electronics, Inc
 www.toaelectronics.com
 www.toaelectronicsUSA.com

FREE DESIGN SERVICES
 freedesign@toaelectronics.com

SALES GROUP
 sales@toaelectronics.com

CUSTOMER SERVICE
 orders@toaelectronics.com

PRODUCT SUPPORT
 techsupport@toaelectronics.com



140 3rd Street South
 Dassel, MN 55325
 Ph. 800-328-8996

Learn More about EverAlert

To learn more about EverAlert and request a consultation, visit american-time.com/everalert

Visit american-time.com to explore more communication and synchronized time solutions.



"The teachers appreciate EverAlert's ability to display analog or digital clock times, the daily school news and even classroom-specific messages like upcoming test reminders."

CHRIS S., SUPERINTENDENT

© 2022 TOA Electronics, Inc. & American Time & Signal Company. All rights reserved. Both TOA & American Time, the TOA & American Time Logos, and all other TOA & American Time company product and solution names and slogans are trademarks or registered trademarks of TOA Corporation or the American Time & Signal Company. Other names and marks are the property of their respective owners.

Specifications are subject to change without notice. (2008) 833-61-100-59-00

