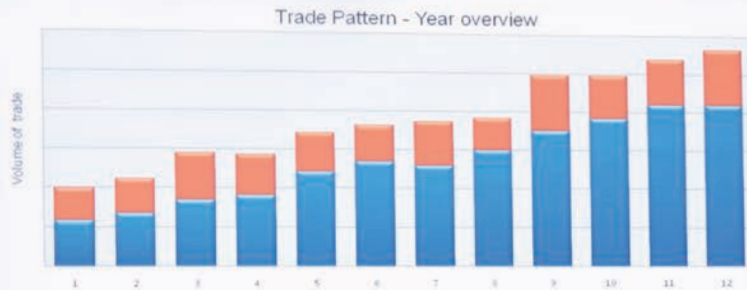


Professional Installation Projectors

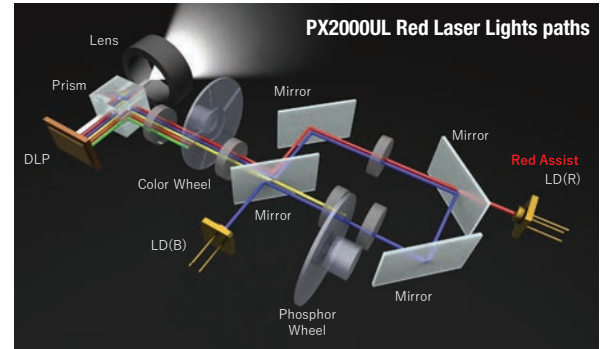
6820UL



Powerful installation projectors with laser-phosphor light source supports new, demanding projection applications.

Laser Light Module

- 20,000-plus hours of virtually maintenance-free operation
- High-brightness, lower power consumption enhances applications such as retail, digital signage and theme parks
- Ability to control brightness creating a stable image over longer time periods
- Images appear immediately after power on due to instantaneous start up of the laser



Integrated and Powerful

- Project uncompressed FHD video with integrated HDBaseT
- High performance video processing/scaling creates life-like images
- Integrated software applications such as DisplayNote®, Crestron Roomview, AMX Beacon and PJ Link allow for complete interactivity and control
- Tile Matrix enables 4Kx2K resolution

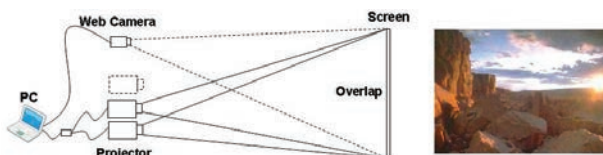
Flexible

- Enjoy greater installation flexibility with a complete line of powered optional bayonet style lenses (4) for quick and easy exchange. Lens throw distances range from 3.3 to 137 ft
- Tilt-free installation capabilities make these projector ideal for almost any install environment, including portrait orientation
- +50%/-10% vertical lens shift and +/-30% horizontal lens shift capabilities make alignment easy



Stacking correction

The industry's first built-in stacking correction capabilities (up to four projectors) allows the projectors to boost an image's brightness up to 80,000 lumens, which is ideal for larger-sized screens and environments with heavy ambient light. This feature also prevents the complete loss of an image, which can happen when using only one projector.



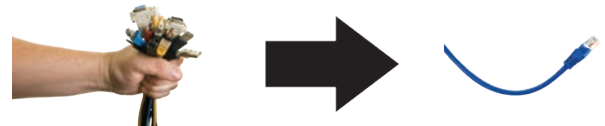
Edge blending

This function seamlessly blends multiple projected images to display a single high-resolution image.



Built-In HDBaseT Support

Simplify your installations with HDBaseT. Optimized for video applications and supporting uncompressed full HD digital video, audio, ethernet, power and various control signals. With only a single cable (up to 100m) to run, infrastructure and labor costs are reduced, installations are significantly easier, and there is no cable clutter to manage. With uncompressed HD video support, images have never been more stunning. What's more, control signals are contained in the same cable.



3D

When combined with active shutter glasses and 3D emitter, this Series Projectors create 3D images from a computer or Blu-ray player. This Series utilize the 3D sync line output from the projector to connect to the 3D emitter. Optional 3D glasses and emitters from XPAND are available from NEC.



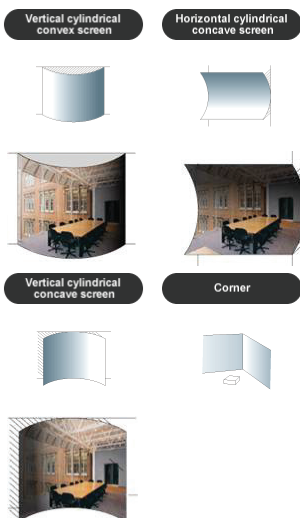
DisplayPort

This input provides models with expanded connectivity with advanced technology.



Geometric Correction

Projecting an image isn't confined to a standard flat screen or wall with this Series. Geometric correction allows these models to project an image on spheres, cylinders, corner angles and many more non-standard surfaces.



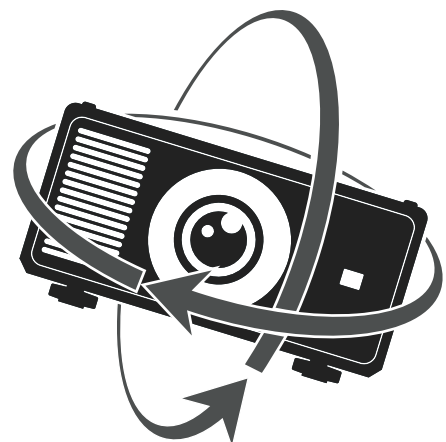
Remote control

Wired and wireless backlit remote allows you to adjust for complete control of the projectors menu structure in a well lit or dark environment. Direct controls such as lamp mode, aspect ratio, volume and input selection eliminates multiple button pushes.



Roll Free

When installation requirements dictate the projector needs to be placed at different angles the 6820UL with Roll Free capabilities assures it is the correct projector of choice.



UNIQUE FEATURES

3D Reform™ allows you to square the image by adjusting horizontally, vertically or diagonally when the projector cannot be placed parallel or perpendicular to the screen

Advanced AccuBlend™ ensures detailed images when non-native resolution sources are connected to the projector

AutoSense™ automatically syncs with any computer signal and features one-touch image optimization

64-step image magnification with location control

Discreet source keys for source selection

Remote diagnostics enable the user to monitor and make adjustments to the projector remotely

Built-in HTTP page for control and monitoring over a LAN network. Email notification of error messages or lamp end-of-life can be sent to remote locations.

WARRANTY

Registered owners receive a five (5) years or 20,000 hours (whichever comes first) parts and labor warranty

IN THE BOX

Remote control, batteries, power cord, user's manual on CD-ROM, quick start guide, product registration card.

ACCESSORIES

NC1100CM	Ceiling mount
RMT-PJ35	Replacement remote control
NP01PW1	Power cable
RGBCBL-PJPX	RGB cable
Optional Lenses	NP45ZL, NP46ZL, NP47ZL, NP48ZL
ADVEXON1-I	Extends term of InstaCare service program to 2 years
ADVEXON2-I	Extends term of InstaCare service program to 3 years

ORDERING MODEL NUMBERS

6820UL



		6820UL	
DMD Specifications		DLP (0.96" DMD)	
Light Output (lumens)		20,000 (Center) Boost Mode	
Resolution	Native	WUXGA 1920 x 1200	
	Maximum	WXGA 2560 x 1600	
Contrast Ratio (up to)		10,000:1 with Dynamic Black	
Lamp Life (up to)		20,000 hours	
Screen Size (diagonal)		40 to 500 in. / 1.02 to 12.7m	
Throw Ratio	NP45ZL	0.9 - 1.2:1	
	NP46ZL	1.2-1.56:1	
	NP47ZL	1.5-2.0:1	
	NP48ZL	2.0-4.0:1	
Projection Distance		33.3 to 137 ft. / 1.0 to 47.8m	
Projection Angle		10.3 to 10.8° tele / 13.7 to 14.5° wide	
Lens	Zoom	Motorized	
		NP45ZL	1.4x
		NP46ZL	1.4x
		NP47ZL	2.3x
		NP48ZL	2.0x
	Focus	Motorized	
		NP45ZL	F=2.2 to 2.53, f= 19.34 to 25.76mm, 6.3 lbs. / 2.85 kg
		NP46ZL	F=2.18 to 2.66, f= 25.69 to 33.22mm, 4.5 lbs. / 2.02 kg
		NP47ZL	F=2.17 to 2.65, f= 31.90 to 42.20mm, 4.5 lbs. / 2.02 kg
		NP48ZL	F=2.17 to 2.65, f= 42.60 to 84.80mm, 5.9 lbs. / 2.66 kg
Shift	+50/-10% Vertical, +/-30% Horizontal		
Shutter	Laser Shutter		
Keystone Correction		+/- 60° horizontal, +/- 40° vertical	
Synchronization Range	Horizontal	Analog: 15-100kHz, Digital: 15-153kHz	
	Vertical	Analog: 48-120Hz, Digital: 24-120Hz	
Supported Video Standards		NTSC, NTSC4.43, PAL, PAL-60, PAL-M, PAL-N, SECAM	
SD/HD Video Signal Compatibility		480i, 480p, 576i, 576p, 720p, 1080i, 1080p	
PC Signal Compatibility		VGA, SVGA, XGA, SXGA, SXGA+, UXGA, WUXGA	
Macintosh Compatibility		Yes	
Input Terminals	RGB1 (analog)	VGA 15 pin D-sub, Component video using ADP-CV1E adapter	
	RGB2 (analog)	5BNC	
	RGB2 (digital)	HDMI (V2.0) w/HDCP (V1.4/2.2)	
	RGB3 (digital)	HDMI (V2.0) w/HDCP (V1.4/2.2)	
	RGB3 (digital)	DisplayPort w/HDCP (V1.4)	
	RGB3 (digital)	DVI-D w/HDCP (V1.4/2.2)	
	RGB4 (digital)	HDBaseT w/HDCP (V1.4/2.2)	
Output Terminals	Monitor Out	VGA 15 pin D-sub	
	3D Sync Line	BNC	
External Control		RS-232, IR, DDC/CI	
Control Terminals		HDBaseT, LAN, PC Control (D-Sub 9-Pin), Wired Remote (Stereo Mini Jack), Trigger (Stereo Mini Jack)	
Sync Compatibility		Separate Sync / Composite Sync / Sync on G	
Power Requirements		200-240V AC, 50/60 Hz	
Input Current		9.7A	
Power Consumption			
(Boost Mode/Normal Mode/Eco Mode/Standby Sleep/Standby Normal)		1922W / 1779W / 1461W / 4.8W / 0.4W	
Installation Orientation		Floor/Front, Floor/Rear, Ceiling/Front, Ceiling/Rear	
Product Dimensions (WxHxD)		20.9 x 10.8 x 29.4 in. / 530 x 275 x 748 mm	
Net Weight		112.4 lbs. / 51 kg	
Shipping Dimensions (WxHxD)		30.7 x 19.2 x 38.9 in. / 779 x 488 x 977 mm	
Gross Weight		146 lbs. / 66 kg	
Fan Noise		45 dB normal / 43 dB eco	
Regulations	US	USA UL60950-1: 2nd edition, FCC Part15 Subpart B(ANSI C63.4:2014)	
	Canada	CAN/CSA C22.2 No.60950-1-07,2nd Edition,2014, ICES-003 Issue6(ANSI C63.4:2014)	
Operating	Temperature	41-104°F / 5-40°C	
	Humidity	20-80% non-condensing	
Storage	Temperature	-4-140°F / -20-60°C	
	Humidity	10% - 85% (non-condensing)	



HDMI, the HDMI Logo and High-Definition Multimedia Interface are trademarks or registered trademarks of HDMI Licensing LLC. All other brand or product names are trademarks or registered trademarks of their respective holders. Product specifications subject to change.