



Scan for full manual

WP-872xr Quick Start Guide

This guide helps you install and use your **WP-872xr** for the first time.

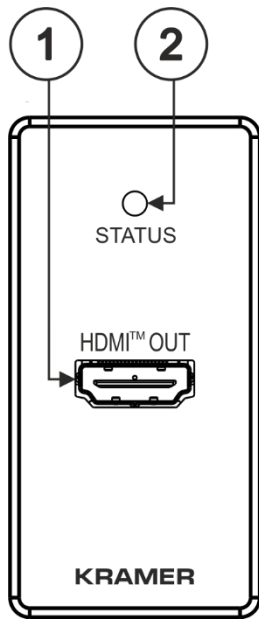
Go to www.kramerav.com/downloads/WP-872xr to download the latest user manual and check if firmware upgrades are available.

Step 1: Check what's in the box

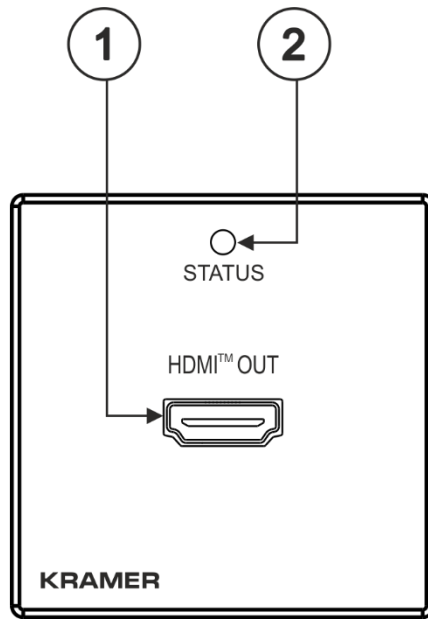
- ✓ WP-872xr HDMI 4K Line Receiver
- ✓ Installation accessories
- ✓ 1 Power adapter (with open DC head) and cord
- ✓ 1 Quick start guide
- ✓ Frame (or frame set) and faceplate

Step 2: Get to know your WP-872xr

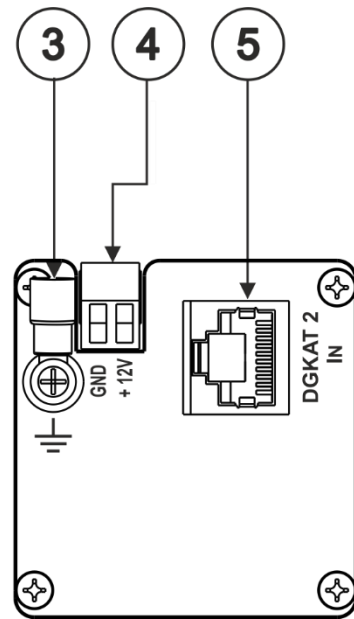
US-D Version
Front



EU/UK Version
Front



US-D/EU/UK Version
Rear

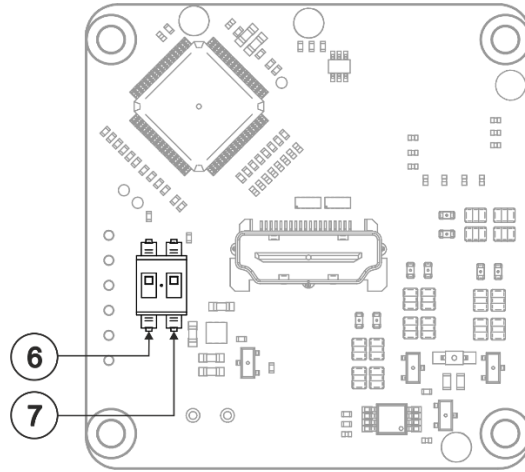



#	Feature	Function
1	HDMI™ OUT Connector	Connects to an HDMI acceptor.
2	STATUS LED	Lights green when power is connected to the device. Lights blue when powered and both active source and acceptor are detected.
3	Ring Tongue Terminal Grounding Screw	Connect to grounding wire (optional).
4	Power Supply 2-pin Terminal Block Connector	To connect to a power supply (if required). Connect GND to GND, +12V to +12V.
5	DGKat-2.0 IN RJ-45 Connector	Connect to the DGKat-2.0 OUT connector on the transmitter using CAT 6A cable.

The terms HDMI, HDMI High-Definition Multimedia Interface, and the HDMI Logo are trademarks or registered trademarks of HDMI Licensing Administrator, Inc.



Front Panel – Before Assembly

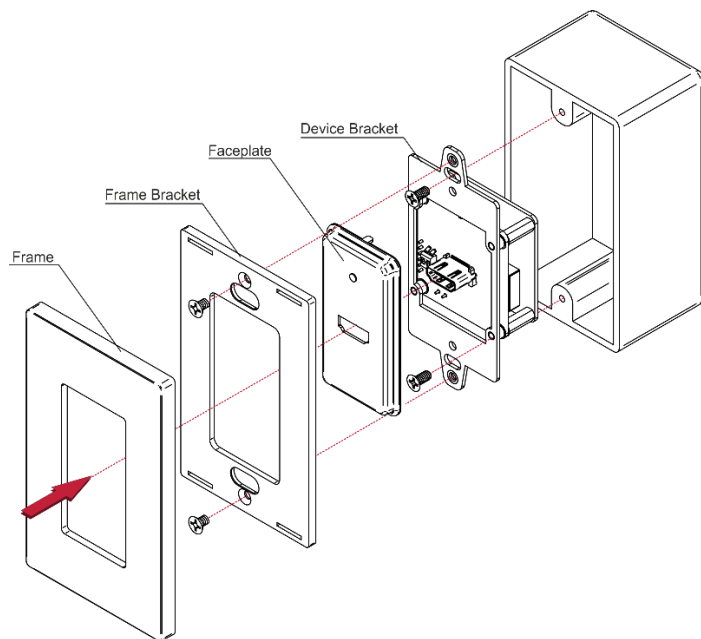


#	Feature	Function	
	SETUP DIP-switches		Do not change the default DIP-switch settings (located on the front panel, behind the frame)
6	DIP-switch 2	N/A	Must be set to OFF (up).
7	DIP-switch 1	Compression	Must be set to ON (down).

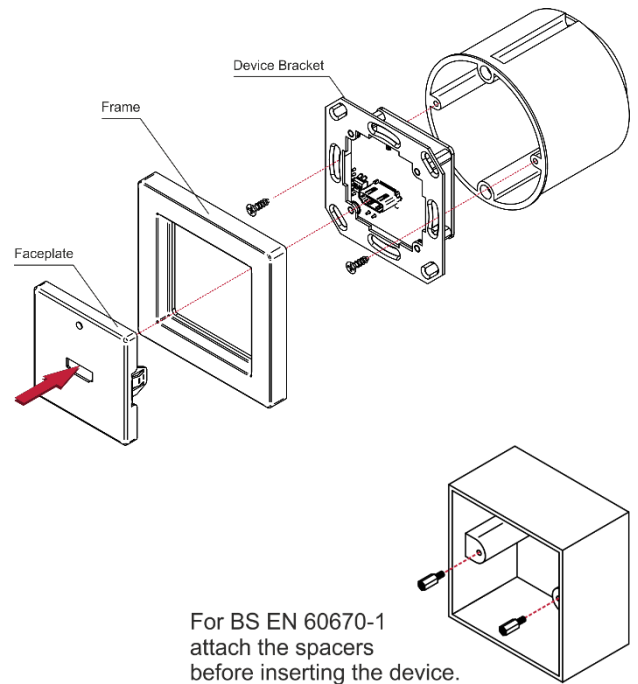
Step 3: Install the WP-872xr

Insert the device into the in-wall box (note THAT first you need to connect the DGKAT 2.0 cable and power) and connect the parts as shown in the illustrations below:

US-D Version



EU/UK Version



DECORA® design frames are included in US-D models.
DECORA® is a registered trademark of Leviton Manufacturing Co., Inc.

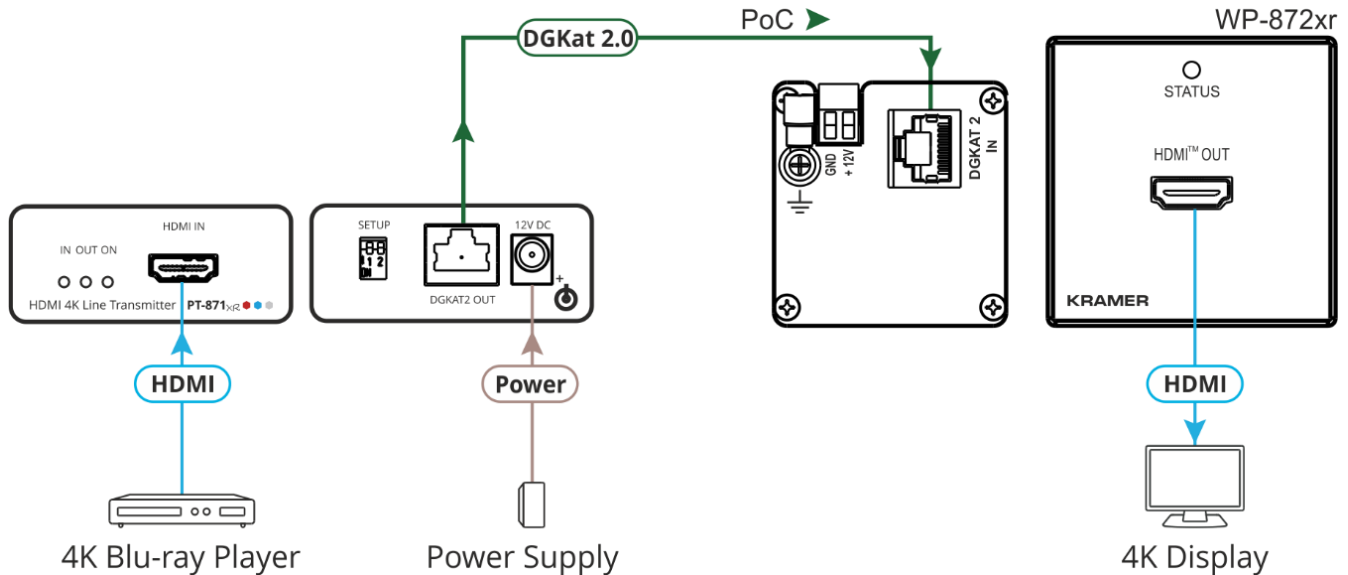
We recommend that you use any of the following standard 1 Gang in-wall junction boxes (or their equivalent):

- **US-D:** 1 Gang US electrical junction boxes.
- **EU:** 1 Gang in-wall junction box, with a cut-hole diameter of 68mm and depth that can fit in both the device and the connected cables (DIN 49073).
- **UK:** 1 Gang in-wall junction box, 75x75mm (W, H) and depth that can fit in both the device and the connected cables (BS 4662 or BS EN 60670-1 used with supplied spacers and screws).

Step 4: Connect the inputs and outputs

Always switch OFF the power on each device before connecting it to your **WP-872xr**. For best results, we recommend that you always use Kramer high-performance cables to connect AV equipment to the **WP-872xr**.

We highly recommend using only Kramer UNIKAT cables with these products. If using 3rd party shielded CAT 6A cables, both ends of the shield must be soldered to the connectors for the products to function properly. Do not use any jumpers, unshielded wall plates or mid-span cable connections. These extenders are not compatible with HDBaseT technologies. Prior to signal extension, ensure that the extension line cable is lying straight and not coiled.



Step 5: Connect the power

Connect the 12V power adapter to the remote device (for example, **PT-871xr**) or to **WP-872xr** if needed, and plug the power supply into the mains electricity. This device provides power to its counterpart via DGKat 2.0. Each device can provide or accept power over cable (PoC) via DGKat 2.0.

Connect the power cord to **WP-872xr** and plug it into the mains electricity.

Safety Instructions (See www.kramerav.com for updated safety information)



Caution:

- For products with relay terminals and GPIO ports, please refer to the permitted rating for an external connection, located next to the terminal or in the User Manual.
- There are no operator serviceable parts inside the unit.

Warning:

- Use only the power cord that is supplied with the unit.
- Disconnect the power and unplug the unit from the wall before installing.

Technical Specifications

Inputs	1 DGKAT 2.0	On a female RJ-45 connector
Outputs	1 HDMI	On a female HDMI connector
Video	Transmitted Data Bandwidth	Up to 18Gbps (6Gbps per graphic channel)
	Max Resolution	3840x2160@60Hz (4:4:4) 24bpp
	Compliance	HDCP 2.2, HDR 10
Reach Extension	We recommend that you use Kramer shielded cables to achieve optimum extension ranges.	
	High Compression Level	Up to 60m (200ft) at 4K@60Hz (4:4:4) Up to 70m (230ft) at 4K@30Hz (4:4:4) or full HD (1080p @60Hz 36bpp)
Control	Behind Frame	DIP-switches
	Front panel	STATUS LED
Power	Consumption	12V DC, 600mA when coupled with a compatible receiver
	Source	12V DC, 2A
Environmental Conditions	Operating Temperature	0° to +40°C (32° to 104°F)
	Storage Temperature	-40° to +70°C (-40° to 158°F)
	Humidity	10% to 90%, RHL non-condensing
Regulatory Compliance	Safety	CE
	Environmental	RoHs, WEEE
Enclosure	Net Dimensions (W, D, H)	US-D: 7cm x 3.1cm x 11.4cm (2.8" x 1.2" x 4.5) EU: 8cm x 3.1cm x 8cm (3.1" x 1.2" x 3.1) UK: 8.6cm x 3.1cm x 8.6cm (3.4" x 1.2" x 3.4")
	Shipping Dimensions (W, D, H)	23.2cm x 13.6cm x 10cm (9.1" x 5.4" x 3.9")
	Net Weight	0.17kg (0.4lbs)
	Shipping Weight	0.56kg (1.2lbs) approx.
	Type	Aluminum
	Cooling	Convection ventilation
Accessories	Included	1 Power adapter, 1 power cord, installation accessories For the US-D version: 2 US Frame sets and faceplates (in black and in white) For the European version: 1 EU white frame, 1 UK white frame, 1 EU/UK white faceplate
Specifications are subject to change without notice at www.kramerav.com		