

# KRAMER



## USER MANUAL

**MODEL:**

**NT-52P**

2-Port Universal I/O PoE Control Gateway



Scan for full manual

## NT-52P Quick Start Guide

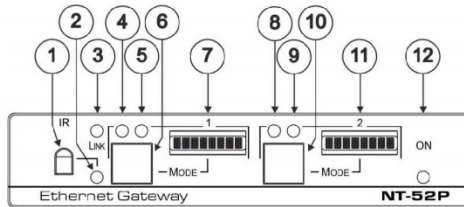
This guide helps you install and use your NT-52P for the first time.

Go to [www.kramerav.com/downloads/NT-52P](http://www.kramerav.com/downloads/NT-52P) to download the latest user manual and check if firmware upgrades are available.

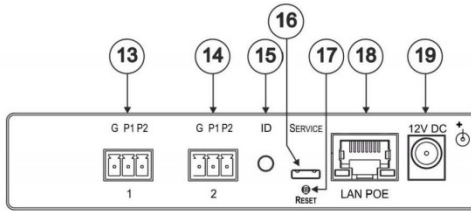
### Step 1: Check what's in the box

- NT-52P Ethernet Gateway
- 4 Rubber feet
- 1 Bracket set
- 1 Power supply (12V DC)
- 1 Quick start guide

### Step 2: Get to know your NT-52P



| #  | Feature                 | Function                                                                              |
|----|-------------------------|---------------------------------------------------------------------------------------|
| 1  | IR Sensor               | Sensor for IR learning                                                                |
| 2  | IR LED                  | Lights blue to indicate IR activity                                                   |
| 3  | LINK LED                | Lights blue to indicate Ethernet link activity                                        |
| 4  | Port 1 Blue LED         | Port 1 activity left indication. For functionality, see the function table            |
| 5  | Port 1 White LED        | Port 1 activity right indication. For functionality, see the function table           |
| 6  | Port 1 MODE Button      | Press to cycle through and select Port 1 mode function                                |
| 7  | Port 1 MODE LCD Display | Displays selected Port 1 mode function: RS-232, RS-232 Cross, RS-485, Relay, IR, GPIO |
| 8  | Port 2 Blue LED         | Port 2 activity left indication. For functionality, see the function table            |
| 9  | Port 2 White LED        | Port 2 activity right indication. For functionality, see the function table           |
| 10 | Port 2 MODE Button      | Press to cycle through and select Port 2 function                                     |
| 11 | Port 2 MODE LCD Display | Displays selected Port 2 mode function: RS-232, RS-232 Cross, RS-485, Relay, IR, GPIO |
| 12 | ON LED                  | Lights green when unit power is on                                                    |



| #  | Feature                         | Function                                                                                                                       |
|----|---------------------------------|--------------------------------------------------------------------------------------------------------------------------------|
| 13 | Port 1 I/O 3-pin Terminal Block | Port 1 terminal block                                                                                                          |
| 14 | Port 2 I/O 3-pin Terminal Block | Port 2 terminal block                                                                                                          |
| 15 | ID                              | Press to broadcast ID message for auto-discovery of the device                                                                 |
| 16 | SERVICE Mini USB Connector      | Connects to a PC for a local firmware upgrade                                                                                  |
| 17 | RESET Button                    | Press and hold while cycling the device power to reset to factory default parameters                                           |
| 18 | LAN/POE RJ-45 Connector         | Connects to a PoE source (Power over Ethernet) for powering and an IP client or other controller, either directly or via a LAN |
| 19 | 12V DC Connector                | Connects to the 12V DC power supply, center pin positive. Not needed when the device is supplied power by a PoE power source   |

#### NT-52P Function Table

| Port IO Function | 8-Char Display Text* | Terminal Block Connections |                 |                 | IO Port Default | TCP Default Port [P1/P2] | Mode Button LED color | Blue Activity LED [left]                  | White Activity LED [right]                |
|------------------|----------------------|----------------------------|-----------------|-----------------|-----------------|--------------------------|-----------------------|-------------------------------------------|-------------------------------------------|
|                  |                      | G                          | P1              | P2              |                 |                          |                       |                                           |                                           |
| RS-232           | RS-232               | Ground                     | Rx              | Tx              | 9600,8,N,1      | 5001/2                   | Yellow                | Flashes when receiving data               | Flashes when transmitting data            |
| Crossed RS-232   | RS-232X              | Ground                     | Tx              | Rx              | 9600,8,N,1      | 5001/2                   | Green                 | Flashes when receiving data               | Flashes when transmitting data            |
| RS-485           | RS-485               | Ground                     | Rx (+)          | Tx (-)          | 9600,8,N,1      | 5001/2                   | Pink                  | Flashes when receiving data               | Flashes when transmitting data            |
| IR               | IR+IR                | Ground                     | IR <sub>1</sub> | IR <sub>2</sub> |                 | 5000                     | Red                   | ON when transmitting IR <sub>1</sub> data | ON when transmitting IR <sub>2</sub> data |
| IO               | IO+IO                | Ground                     | IO <sub>1</sub> | IO <sub>2</sub> | Digital In x 2  | 5000                     | Blue                  | ON when IO <sub>1</sub> is active         | ON when IO <sub>2</sub> is active         |
| Relay            | Relay                | Common                     | Normally Open   | Normally Closed | Normally Open   | 5000                     | White                 | N/A                                       | ON when Relay is active                   |

#### Key:

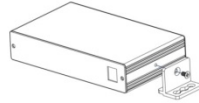
Tx – Transmit, Rx – Receive  
 9600, 8, N, 1 – 9600 baud, 8-bits, no parity, 1 stop bit  
 P1 / P2 – Port 1 / Port 2  
 IR<sub>1</sub> / IR<sub>2</sub> – IR Port 1 / IR Port 2  
 IO<sub>1</sub> / IO<sub>2</sub> – IO Port 1 / IO Port 2  
 \*This text can indicate different configurations set using the Web UI

---

### Step 3: Install the NT-52P

Install **NT-52P** using one of the following methods:

- Attach the rubber feet and place the unit on a flat surface.
- Fasten a bracket (included) on each side of the unit and attach it to a flat surface. For more information go to [www.kramerav.com/downloads/NT-52P](http://www.kramerav.com/downloads/NT-52P).
- Mount the unit in a rack using an optional **RK-3T** rack adapter.

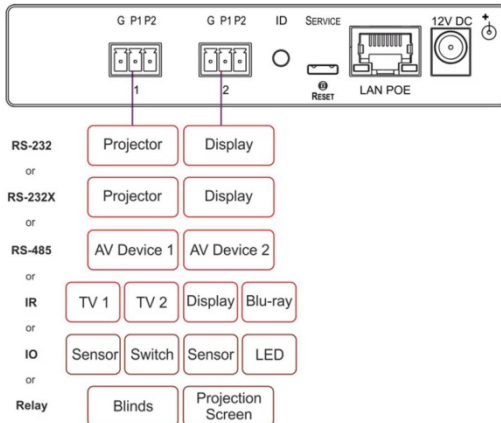


---

### Step 4: Connect the ports

Always switch OFF the power on each device before connecting it to your **NT-52P**. For best results, we recommend always to use Kramer high-performance cables to connect AV equipment to the **NT-52P**.

The **NT-52P** can be connected as shown in the following example. Note that Ports 1 and 2 need not have the same configuration and can be different. For example, Port 1 can be a Relay and Port 2 can be RS-232.



---

## Step 5: Connect the power

Connect the PoE power source and/or a 12V DC power supply to the **NT-52P** and plug it into the mains electricity.

### Safety Instructions



**Caution:** There are no operator serviceable parts inside the unit.  
**Warning:** Use only the Kramer Electronics power supply that is provided with the unit.  
**Warning:** Disconnect the power and unplug the unit from the wall before installing.  
See [www.kramerav.com](http://www.kramerav.com) for updated safety information.

---

## Step 6: Configure and operate the NT-52P

**Note:** The **NT-52P** is shipped from the factory with DHCP enabled and a random IP address. To connect the **NT-52P** on first installation, you must identify what IP address has been automatically assigned to the **NT-52P**. To discover the IP address of **NT-52P**, use **K-LAN Configurator**, available for download from our website at [www.kramerav.com](http://www.kramerav.com).

### To reset the device to its factory default settings:

1. Turn off the power to the device.
2. Press and hold the Reset button on the rear panel.
3. Turn on the power to the device while holding down the Reset button for a few seconds.
4. Release the button.  
The device is reset to the factory default settings.

### To browse the NT-52P Web UI (User Interface) using factory default settings:

Use the default host name: **NT-52P-xxxx**, where xxxx are the last four digits of the serial number of the device.

### To select the port operating Mode:

1. Press the front panel port MODE button to cycle through modes in the following order:  
**RS-232 > RS-232 Cross > RS-485 > Relay > IR > IO**
2. Press the MODE button until the desired mode is reached.
3. After stopping, there is a 5 second delay, then "Save?" is displayed for another 5 seconds, during which press the MODE button again to save the mode.
4. If no additional button press was detected, "Unsaved" is displayed for 5 seconds and the device returns to the last saved mode.

### To configure and operate the NT-52P:

1. Using the device Web UI, configure the control gateway:
  - Set DHCP or assign a static IP address
  - Associate IP port(s) with the relevant port(s)
  - Configure the relevant port parameters
2. Configure IP client connection port(s) on a Kramer control or any other control software application.
3. Set the control application to use the control gateway ports for sending and receiving control communication over the IP

### To lock and unlock the port Mode buttons:

1. Press the MODE button for more than 5 seconds.
2. The button locks and the port displays "Locked" after pressing the button again.
3. To unlock the button, press it for over 5 seconds.

# Contents

|           |                                                                     |           |
|-----------|---------------------------------------------------------------------|-----------|
| <b>1</b>  | <b>Introduction</b>                                                 | <b>1</b>  |
| <b>2</b>  | <b>Getting Started</b>                                              | <b>2</b>  |
| 2.1       | Achieving the Best Performance                                      | 2         |
| 2.2       | Safety Instructions                                                 | 2         |
| 2.3       | Recycling Kramer Products                                           | 3         |
| <b>3</b>  | <b>Overview</b>                                                     | <b>4</b>  |
| <b>4</b>  | <b>Defining the NT-52P 2-Port Universal I/O PoE Control Gateway</b> | <b>6</b>  |
| <b>5</b>  | <b>Initial Configuration and Use Overview</b>                       | <b>9</b>  |
| 5.1       | Configuring the NT-52P 2-Port Universal I/O PoE Control Gateway     | 9         |
| 5.2       | Setting Up an Ethernet Connection on the PC                         | 11        |
| <b>6</b>  | <b>Connecting the NT-52P</b>                                        | <b>12</b> |
| 6.1       | Connecting via Ethernet                                             | 14        |
| <b>7</b>  | <b>Remote Operation via the Web UI</b>                              | <b>19</b> |
| 7.1       | Browsing the Web UI                                                 | 19        |
| 7.2       | Setting the Port Types                                              | 22        |
| 7.3       | Displaying Connected Clients                                        | 22        |
| 7.4       | Setting Device Name and Time Functions                              | 23        |
| 7.5       | Setting Communication Parameters                                    | 25        |
| 7.6       | Setting Serial Port Parameters                                      | 25        |
| 7.7       | Setting GPIO Port Parameters                                        | 28        |
| 7.8       | Setting Relay Port Status                                           | 32        |
| 7.9       | Configuring IR Command Learning                                     | 33        |
| 7.10      | Activating Security                                                 | 34        |
| 7.11      | Using the Logs Page                                                 | 36        |
| 7.12      | Kramer Information                                                  | 38        |
| <b>8</b>  | <b>Using NT-52P Operations</b>                                      | <b>39</b> |
| 8.1       | IR Learning                                                         | 39        |
| 8.2       | Resetting to the Factory Default Settings                           | 40        |
| 8.3       | Upgrading the Firmware                                              | 40        |
| <b>9</b>  | <b>Technical Specifications</b>                                     | <b>41</b> |
| 9.1       | Data Handling Performance                                           | 42        |
| 9.2       | Example Bandwidth Calculation                                       | 42        |
| <b>10</b> | <b>Default Parameters</b>                                           | <b>43</b> |
| <b>11</b> | <b>Kramer Protocol 3000</b>                                         | <b>44</b> |
| 11.1      | Kramer Protocol 3000 – Syntax                                       | 45        |
| 11.2      | Kramer Protocol 3000 – Command List                                 | 48        |
| 11.3      | Kramer Protocol 3000 – Detailed Commands                            | 49        |

# Figures

|                                                                          |    |
|--------------------------------------------------------------------------|----|
| Figure 1: NT-52P 2-Port Universal I/O PoE Control Gateway                | 6  |
| Figure 2: Connecting the NT-52P for Initial Configuration                | 9  |
| Figure 3: Configuring a Remote Connection                                | 11 |
| Figure 4: Connecting the NT-52P 2-Port Universal I/O PoE Control Gateway | 12 |
| Figure 5: Local Area Connection Properties Window                        | 15 |
| Figure 6: Internet Protocol Version 4 Properties Window                  | 16 |
| Figure 7: Internet Protocol Version 6 Properties Window                  | 16 |
| Figure 8: Internet Protocol Properties Window                            | 17 |
| Figure 9: General Info Page                                              | 20 |
| Figure 10: Ports Type Setting Page                                       | 22 |
| Figure 11: Connected Clients Page                                        | 23 |
| Figure 12: Device Settings Page                                          | 24 |
| Figure 13: Communication Page                                            | 25 |
| Figure 14: Serial Port Settings Page – RS-232 Port Type                  | 26 |
| Figure 15: Serial Port Settings Page – RS-485 Port Type                  | 27 |
| Figure 16: GPIO Port Settings Page                                       | 28 |
| Figure 17: GPIO Port Settings Page Digital IN                            | 29 |
| Figure 18: GPIO Port Settings Page Digital OUT                           | 30 |
| Figure 19: Digital Out Selection Warning Popup                           | 30 |
| Figure 20: GPIO Port Settings Page Analog IN                             | 31 |
| Figure 21: Relay Port Settings Page                                      | 32 |
| Figure 22: IR Command Learner Page                                       | 33 |
| Figure 23: Security Page                                                 | 34 |
| Figure 24: Security Confirmation Popup                                   | 35 |
| Figure 25: Authentication Required Popup                                 | 35 |
| Figure 26: Security Activated Page                                       | 36 |
| Figure 27: Logs Page                                                     | 37 |
| Figure 28: About Us Page                                                 | 38 |

---

# 1 Introduction

Welcome to Kramer Electronics! Since 1981, Kramer Electronics has been providing a world of unique, creative, and affordable solutions to the vast range of problems that confront video, audio, presentation, and broadcasting professionals on a daily basis. In recent years, we have redesigned and upgraded most of our line, making the best even better!

Our 1,000-plus different models now appear in 14 groups that are clearly defined by function: GROUP 1: Distribution Amplifiers; GROUP 2: Switchers and Routers; GROUP 3: Control Systems; GROUP 4: Format/Standards Converters; GROUP 5: Range Extenders and Repeaters; GROUP 6: Specialty AV Products; GROUP 7: Scan Converters and Scalers; GROUP 8: Cables and Connectors; GROUP 9: Room Connectivity; GROUP 10: Accessories and Rack Adapters; GROUP 11: Sierra Video Products; GROUP 12: Digital Signage; GROUP 13: Audio; and GROUP 14: Collaboration.

Congratulations on purchasing your Kramer **NT-52P 2-Port Universal I/O PoE Control Gateway** that is ideal for use in the following applications:

- Remote IP control of any controlled devices
- Fast field replacement of any I/O control gateway
- Remote upgrade of any control I/O interface
- Control system with multiple IP clients
- LAN-based I/O-ports expansion of control systems



---

## 2 Getting Started

We recommend that you:

- Unpack the equipment carefully and save the original box and packaging materials for possible future shipment
- Review the contents of this user manual



Go to [www.kramerav.com/downloads/NT-52P](http://www.kramerav.com/downloads/NT-52P) to check for up-to-date user manuals, application programs, and to check if firmware upgrades are available (where appropriate).

### 2.1 Achieving the Best Performance

To achieve the best performance:

- For optimum range and performance, use the recommended Kramer cables available at [www.kramerav.com/product/NT-52P](http://www.kramerav.com/product/NT-52P)
- Do not secure the cables in tight bundles or roll the slack into tight coils
- Avoid interference from neighbouring electrical appliances that may adversely influence signal quality
- Position your **NT-52P** away from moisture, excessive sunlight and dust



This equipment is to be used only inside a building. It may only be connected to other equipment that is installed inside a building.

### 2.2 Safety Instructions



**Caution:** There are no operator serviceable parts inside the unit

**Warning:** Use only the Kramer Electronics power supply that is provided with the unit

**Warning:** Disconnect the power and unplug the unit from the wall before installing

## 2.3 Recycling Kramer Products

The Waste Electrical and Electronic Equipment (WEEE) Directive 2002/96/EC aims to reduce the amount of WEEE sent for disposal to landfill or incineration by requiring it to be collected and recycled. To comply with the WEEE Directive, Kramer Electronics has made arrangements with the European Advanced Recycling Network (EARN) and will cover any costs of treatment, recycling and recovery of waste Kramer Electronics branded equipment on arrival at the EARN facility. For details of Kramer's recycling arrangements in your particular country go to our recycling pages at [www.kramerav.com/support/recycling/](http://www.kramerav.com/support/recycling/).

---

## 3 Overview

The **NT-52P** is a compact universal-I/O PoE control gateway, capable of plug and play deployment over an existing LAN for remote control of customer-controlled devices via two universal I/O ports. The ports can be configured as bidirectional RS-232, crossed RS-232, RS-485, IR, GPI/O or relay control connections.

Multiple control clients can be connected over IP to the **NT-52P** control gateway for concurrent control of devices, such as AV scalers, video projectors and displays, audio amplifiers, DVD players, sensors, screens, shades, door locks, and lighting.

The **NT-52P** features:

- Innovative Universal I/O Ports – Remote IP-based control of any device connected to the control gateway universal I/O ports, with selectable port configuration to bidirectional RS-232, RS-232 cross, RS-485, IR, GPI/O or relay control. Each port is adaptable for any room device control simply by toggling a button.
- Multiple IP Connected Clients – Remotely connected over an existing Ethernet network, concurrently controlling any devices connected to control gateway universal I/O ports.
- Easy & Reliable Installation:
  - Plug-and-Play IP Installation with dynamic (DHCP) address resolution and auto device discovery over existing LAN.
  - Compact, designed for piggy-back installation, such as behind a TV or display, with the ability to draw power over Ethernet.
- Remote Management:
  - Single PoE cable for both, powering and connectivity, and Plug and Play IP installation with dynamic (DHCP) address resolution and auto device discovery over existing LAN.
  - Highly-resilient powering with multiple power options — Power over Ethernet per IEEE 802.3af standard, and/or PSU (included).

- Built-in web UI for remote browser-based management and support, by multiple IP-clients over existing LAN.
- Easy firmware upgrades, either remotely via existing LAN, or locally via USB device port.
- Size – DigiTOOLS™ – Mount 3 units side-by-side in a 1U rack space with the optional RK-3T rack adapter.

## 4 Defining the NT-52P 2-Port Universal I/O PoE Control Gateway

This section defines the **NT-52P**.

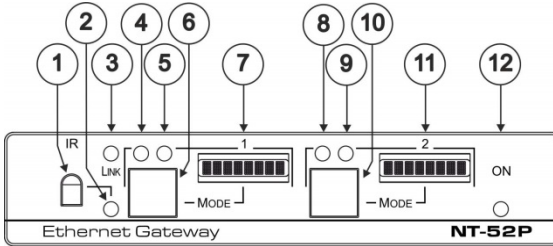
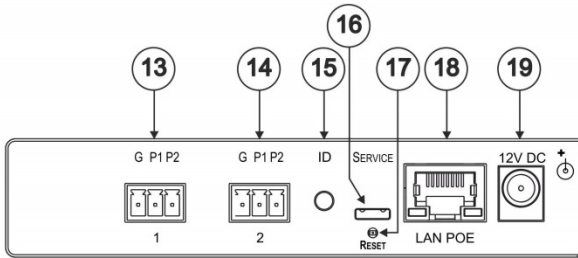


Figure 1: NT-52P 2-Port Universal I/O PoE Control Gateway

| #  | Feature                 | Function                                                                                                                                                                                                                                                                                                                                |
|----|-------------------------|-----------------------------------------------------------------------------------------------------------------------------------------------------------------------------------------------------------------------------------------------------------------------------------------------------------------------------------------|
| 1  | IR Sensor               | Sensor for IR learning                                                                                                                                                                                                                                                                                                                  |
| 2  | IR LED                  | Lights blue to indicate IR learning activity                                                                                                                                                                                                                                                                                            |
| 3  | LINK LED                | Lights blue to indicate Ethernet link activity                                                                                                                                                                                                                                                                                          |
| 4  | Port 1 Blue LED         | Port 1 activity left indication. For functionality, see <a href="#">Table 1</a>                                                                                                                                                                                                                                                         |
| 5  | Port 1 White LED        | Port 1 activity right indication. For functionality, see <a href="#">Table 1</a>                                                                                                                                                                                                                                                        |
| 6  | Port 1 MODE Button      | Press to cycle through and select Port 1 mode function. See <a href="#">Table 1</a> for selected mode button color. Wait ~5sec until 'Save?' is displayed on LCD display, and press again within ~5sec to save the selected mode, otherwise 'Unsaved' is displayed. A long press >5sec locks the saved mode or unlocks the locked mode. |
| 7  | Port 1 MODE LCD Display | Displays selected Port 1 mode function: RS-232, RS-232 Cross, RS-485, Relay, IR, GPIO. See <a href="#">Table 1</a> for the mode of displayed text. When pressing a locked button, 'Locked' is displayed.                                                                                                                                |
| 8  | Port 2 Blue LED         | Port 2 activity left indication. For functionality, see <a href="#">Table 1</a>                                                                                                                                                                                                                                                         |
| 9  | Port 2 White LED        | Port 2 activity right indication. For functionality, see <a href="#">Table 1</a>                                                                                                                                                                                                                                                        |
| 10 | Port 2 MODE Button      | Press to cycle through and select Port 2 mode function. See <a href="#">Table 1</a> for selected mode button color. Wait ~5sec until 'Save?' is displayed on LCD display, and press again within ~5sec to save the selected mode, otherwise 'Unsaved' is displayed. A long press >5sec locks the saved mode or unlocks the locked mode. |
| 11 | Port 2 MODE LCD Display | Displays selected Port 2 mode function: RS-232, RS-232 Cross, RS-485, Relay, IR, GPIO. See <a href="#">Table 1</a> for the mode of displayed text. When pressing a locked button, 'Locked' is displayed.                                                                                                                                |
| 12 | ON LED                  | Lights green when unit power is on                                                                                                                                                                                                                                                                                                      |



| #  | Feature                         | Function                                                                                                                       |
|----|---------------------------------|--------------------------------------------------------------------------------------------------------------------------------|
| 13 | Port 1 I/O 3-pin Terminal Block | Port 1 terminal block                                                                                                          |
| 14 | Port 2 I/O 3-pin Terminal Block | Port 2 terminal block                                                                                                          |
| 15 | ID                              | Press to broadcast ID message for auto-discovery of the device                                                                 |
| 16 | SERVICE Micro USB Connector     | Connects to a PC for a local firmware upgrade                                                                                  |
| 17 | RESET Button                    | Press and hold while cycling the device power to reset to factory default parameters                                           |
| 18 | LAN/POE RJ-45 Connector         | Connects to a PoE source (Power over Ethernet) for powering and an IP client or other controller, either directly or via a LAN |
| 19 | 12V DC Connector                | Connects to the 12V DC power supply, center pin positive. Not needed when the device is supplied power by a PoE power source   |

| Port I/O Function | 8-Char Display Text | Terminal Block Connections |                 |                 | IO Port Default | TCP Default Port [P1/P2] | Mode Button LED color | Blue Activity LED [left]                  | White Activity LED [right]                |
|-------------------|---------------------|----------------------------|-----------------|-----------------|-----------------|--------------------------|-----------------------|-------------------------------------------|-------------------------------------------|
|                   |                     | G                          | P1              | P2              |                 |                          |                       |                                           |                                           |
| RS-232            | RS-232              | Ground                     | Rx              | Tx              | 9600,8,N,1      | 5001/2                   | Yellow                | Flashes when receiving data               | Flashes when transmitting data            |
| Crossed RS-232    | RS-232X             | Ground                     | Tx              | Rx              | 9600,8,N,1      | 5001/2                   | Green                 | Flashes when receiving data               | Flashes when transmitting data            |
| RS-485            | RS-485              | Ground                     | Rx (+)          | Tx (-)          | 9600,8,N,1      | 5001/2                   | Pink                  | Flashes when receiving data               | Flashes when transmitting data            |
| IR                | IR+IR               | Ground                     | IR <sub>1</sub> | IR <sub>2</sub> |                 | 5000                     | Red                   | ON when transmitting IR <sub>1</sub> data | ON when transmitting IR <sub>2</sub> data |
| IO                | IO+IO               | Ground                     | IO <sub>1</sub> | IO <sub>2</sub> | Digital In x 2  | 5000                     | Blue                  | ON when IO <sub>1</sub> is active         | ON when IO <sub>2</sub> is active         |
| Relay             | Relay               | Common                     | Normally Open   | Normally Closed | Normally Open   | 5000                     | White                 | N/A                                       | ON when Relay is active                   |

Table 1: NP-52P Function Table

**Legend:**

Tx – Transmit, Rx – Receive  
 9600, 8, N, 1 – 9600 baud, 8-bits, no parity, 1 stop bit  
 P1 / P2 – Port 1 / Port 2  
 IR<sub>1</sub> / IR<sub>2</sub> – IR Port 1 / IR Port 2  
 IO<sub>1</sub> / IO<sub>2</sub> – IO Port 1 / IO Port 2

# 5 Initial Configuration and Use Overview

This chapter provides an overview of the initial configuration and basic operation of the **NT-52P** and comprises:

- Configuring the **NT-52P** (see [Section 5.1](#))
- Configuring an Ethernet connection on the PC (see [Section 5.2](#))

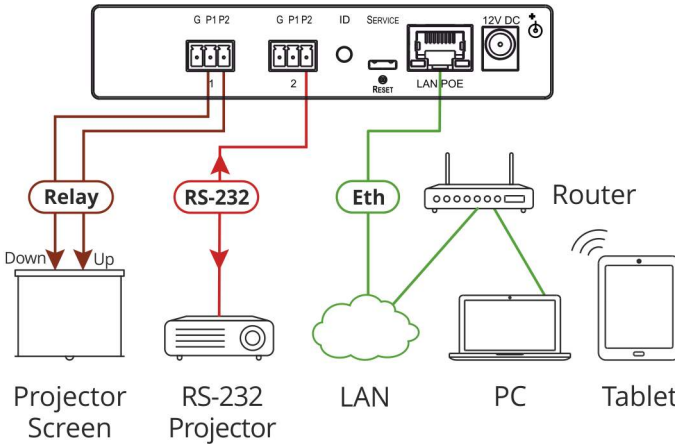


Figure 2: Connecting the NT-52P for Initial Configuration

## 5.1 Configuring the NT-52P 2-Port Universal I/O PoE Control Gateway



The **NT-52P** is shipped from the factory with DHCP enabled (off by default) and a random IP address. To connect the **NT-52P** on first installation, you must identify the IP address that was automatically assigned to the **NT-52P**. To discover the IP address of **NT-52P**, use **K-LAN Configurator**, available for download from our website at [www.kramerav.com](http://www.kramerav.com).

**To browse the NT-52P Web UI on taking the device out of the box:**

Use the default host name: **NT-52P-xxxx**, where xxxx are the last four digits of the serial number of the device.



## To configure the NT-52P:

1. Connect the Ethernet port on the rear panel of the **NT-52P** to a PC, either directly or via a LAN, (see [Section 6.1](#)).
2. Using a Web browser and the relevant IP address or host name (see [Section 9.1](#)), browse the General Info home page (see [Figure 9](#)).
3. Click **Device Settings** to browse to the Device Settings page, (see [Figure 12](#)).
4. Enter the time and date manually, or enter the Time server address for automatic time and date synchronization.
5. Click **Save Changes**.
6. Click **Communication** to browse to the Communication page, (see [Figure 13](#)).
7. Enter the IP address, mask and gateway for static IP addressing and click **Set**. We recommend that you set a meaningful host name.



If you have changed the IP address from the default setting, you must reload the General Info home page again using the new IP address.

8. Click **GPIO Port Settings** to browse to the GPIO Port Settings page, (see [Section 7.6](#)). Here you can configure digital in, digital out and analog in port parameters.
9. Set the trigger type, voltage levels and status of each port.
10. Click **Save Changes**.
11. Click **Relay Port Settings** to browse to the Relay Port Settings page, (see [Section 7.8](#)). Here you can set the relays on or off.
12. If required, click **Security** (see [Section 7.9](#)) to browse to the Security page.
13. Click **ON** to activate security.  
The user name and password credentials popup appears.

14. Enter the required user name and password. (The default user name is **Admin** and the password is **Admin**).

## 5.2 Setting Up an Ethernet Connection on the PC

If the control application can directly connect to the Ethernet driver, select the host IP and port number according to your **NT-52P** configuration, as illustrated in [Figure 3](#).

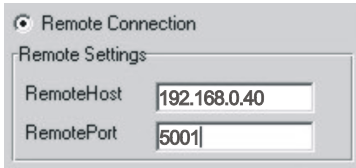


Figure 3: Configuring a Remote Connection

## 6 Connecting the NT-52P



Always switch off the power to each device before connecting it to your **NT-52P**. After connecting your **NT-52P**, connect its power and then switch on the power to each device.

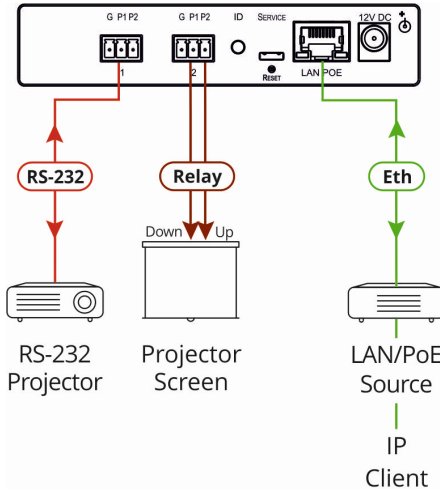


Figure 4: Connecting the NT-52P 2-Port Universal I/O PoE Control Gateway

To connect the **NT-52P** as illustrated in the example in [Figure 4](#):

1. Connect the device to a LAN or PC via the RJ-45 Ethernet connector.
2. Following the [Save Settings Procedure](#), set and save **RS-232** to Mode 1.
3. According to the connections shown in [Table 2](#), connect an RS-232-controlled device, (for example, a projector) to terminal block 1.
4. Following the [Save Settings Procedure](#), set and save **Relay** to Mode 2.
5. According to the connections shown in [Table 2](#), connect a relay-controlled device, (for example, a projection screen) to terminal block 2, Common pin and either Normally Open or Normally Closed pin per needed operation mode.

- If the **NT-52P** does not receive power from a PoE provider, connect the device to the power supply and connect the power adapter to the mains electricity (as shown in [Figure 4](#)).



Changing the port mode resets the ports to their default state: GPIO goes to its low state and the relay goes to its open state.

**Save Settings Procedure:**

- Press to cycle through and select a Port 1 or 2 mode function. See [Table 1](#) for selected mode button color.
- Wait approximately 5 seconds until 'Save?' appears on LCD display
- Press again within about 5 seconds to save the selected mode, otherwise 'Unsaved' displays.
- A long press of over 5 seconds locks the saved mode – 'Locked' appears on the LCD display – or unlocks the locked mode – 'Unlocked' appears on the LCD display.

|                | 8-Char Display Text | Terminal Block Connections |                 |                 |
|----------------|---------------------|----------------------------|-----------------|-----------------|
|                |                     | G                          | P1              | P2              |
| RS-232         | RS-232              | Ground                     | Rx              | Tx              |
| Crossed RS-232 | RS-232X             | Ground                     | Tx              | Rx              |
| RS-485         | RS-485              | Ground                     | Rx (+)          | Tx (-)          |
| IR             | IR+IR               | Ground                     | IR <sub>1</sub> | IR <sub>2</sub> |
| IO             | IO+IO               | Ground                     | IO <sub>1</sub> | IO <sub>2</sub> |
| Relay          | Relay               | Common                     | Normally Open   | Normally Closed |

Table 2: NP-52P Terminal Block Connections

## 6.1 Connecting via Ethernet

You can connect to the **NT-52P** via Ethernet using either of the following methods:

- Directly to the PC using a crossover cable (see [Section 6.1.1](#))
- Via a network hub, switch, or router, using a straight-through cable (see [Section 6.1.2](#))



If you want to connect via a router and your IT system is based on IPv6, speak to your IT department for specific installation instructions.

### 6.1.1 Connecting the Ethernet Port Directly to a PC

You can connect the Ethernet port of the **NT-52P** directly to the Ethernet port on your PC using a crossover cable with RJ-45 connectors.



This type of connection is recommended during installation, following a factory reset that restores the default IP address.

After connecting to the Ethernet port, configure your PC as follows:

1. Click **Start > Control Panel > Network and Sharing Center**.
2. Click **Change Adapter Settings**.
3. Highlight the network adapter you want to use to connect to the device and click **Change settings of this connection**.

The Local Area Connection Properties window for the selected network adapter appears as shown in [Figure 5](#).

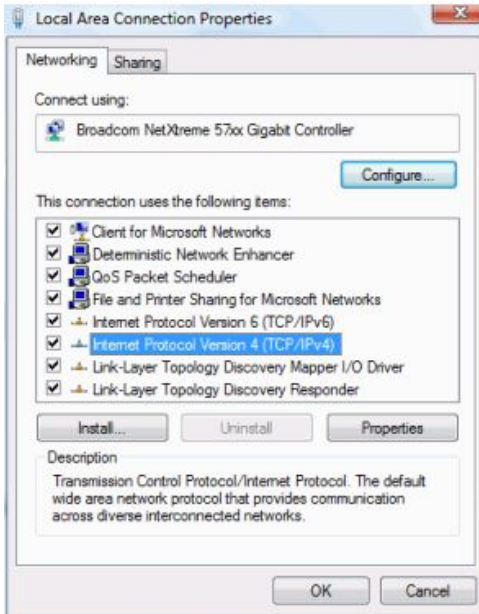


Figure 5: Local Area Connection Properties Window

4. Highlight **Internet Protocol Version 4 (TCP/IPv4)** and click **Properties**.  
The Internet Protocol Properties window relevant to your IT system appears as shown in [Figure 6](#) or [Figure 7](#).

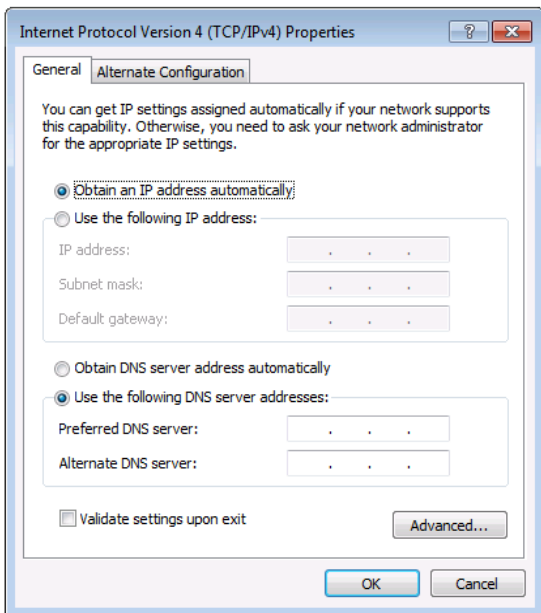


Figure 6: Internet Protocol Version 4 Properties Window

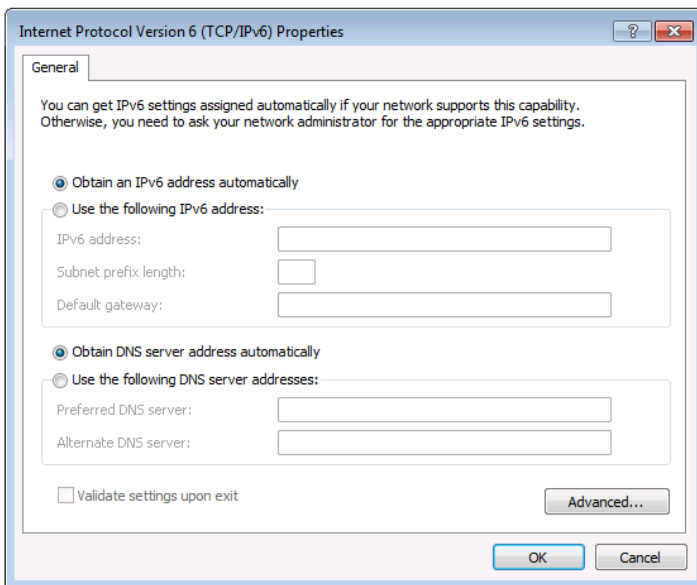


Figure 7: Internet Protocol Version 6 Properties Window

5. Select **Use the following IP Address** for static IP addressing and fill in the details as shown in [Figure 8](#).

For TCP/IPv4 you can use any IP address in the range 192.168.1.1 to 192.168.1.255 (excluding 192.168.1.39) that is provided by your IT department.

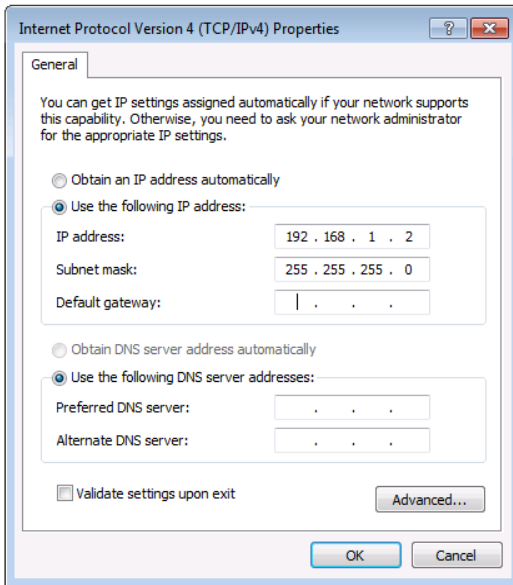


Figure 8: Internet Protocol Properties Window

6. Click **OK**.
7. Click **Close**.

### 6.1.2 Connecting the Ethernet Port via a Network Hub or Switch

You can connect the Ethernet port of the **NT-52P** to the Ethernet port on a network hub or switch using a straight-through cable with RJ-45 connectors.



### 6.1.3 Connecting an RS-232/RS-485 Controlled Device

**To connect an RS-232/RS-485 device:**

- Following the [Save Settings Procedure](#), set and save **RS-232** or **RS-232X** or **RS-485** in Mode 1 or Mode 2.
- Connect the serial-controlled device to the configured port 1 or 2 terminal block, according to the connections shown in [Table 2](#).
- When RS-232 device connecting cable needs to be wired-crossed, such as using straight-through cable instead of crossed cable, press the Mode button until **RS-232X** displays in the LCD display and save the setting, to eliminate need for actual cable replacement.
- When RS-485 device is connected, set the right RS-485 termination mode as shown in [Section 7.6](#).

### 6.1.4 Connecting an IR Device

**To connect an IR device:**

- Following the [Save Settings Procedure](#), set and save **IR** in Mode 1 or Mode 2.
- Connect the IR device to the configured port 1 or 2 terminal block, P1 or P2 sub-port, according to the connections shown in [Table 2](#).

### 6.1.5 Connecting a GPIO Device

**To connect a GPIO device:**

- Following the [Save Settings Procedure](#), set and save **GPIO** in Mode 1 or Mode 2.
- Connect the GPIO device to the configured port 1 or 2 terminal block, P1 or P2 sub-port, according to the connections shown in [Table 2](#).

### 6.1.6 Connecting a Relay Controlled Device

**To connect a relay-controlled device:**

- Following the [Save Settings Procedure](#), set and save **Relay** in Mode 1 or Mode 2.

Connect the relay-controlled device to the configured port 1 or 2 terminal block, Common pin and either Normally Open or Normally Closed pin per needed operation mode, according to the connections shown in [Table 2](#).

---

# 7 Remote Operation via the Web UI

The embedded Web UI can be used to remotely operate the **NT-52P** using a Web browser and an Ethernet connection.

Before attempting to connect:

- Perform the initial configuration in [Section 5.1](#) and connecting via Ethernet in [Section 6.1](#)
- Ensure that your browser is supported (see [Section 9](#))

## 7.1 Browsing the Web UI

**To browse the Web UI:**

1. Open your Internet browser. Type the IP address or host name of the device (see [Section 5.1](#)) in the Address bar of your browser.



The Loading page appears followed shortly by the General Info page shown in [Figure 9](#).

The General Info page displays the following:

- Model Name
- Firmware version
- Device serial number
- Web UI version

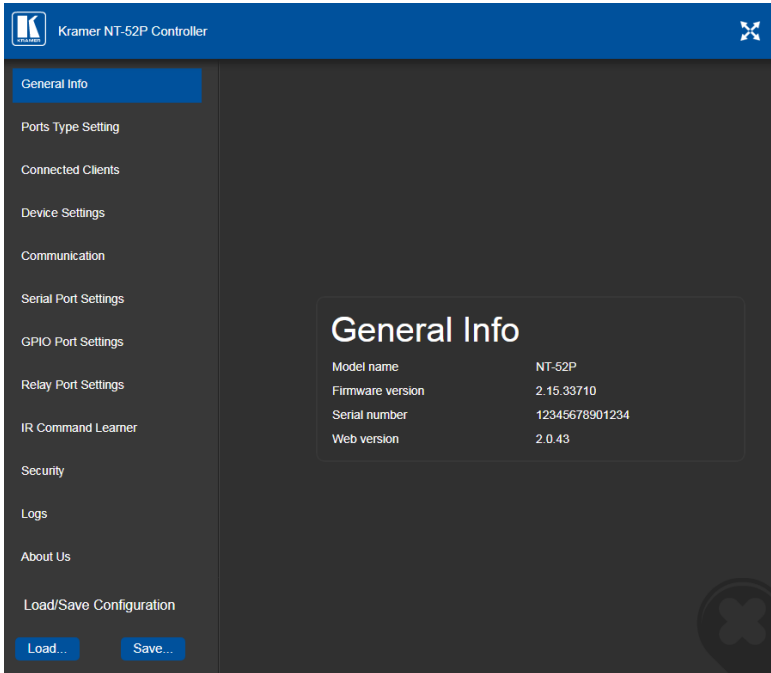


Figure 9: General Info Page

## Loading and Saving Configurations

Loading and saving configurations is used for duplicating multiple device definitions for easy system configuration. The configurations are loaded and saved to a local PC. Load and save is performed using the buttons at the bottom left-hand side of the screen for all pages displayed.

### To load a configuration:

1. Click **Load**.  
The Explorer window opens.
2. Browse to the required file.
3. Select the required file and click **Open**.  
The device is configured according to the saved preset.

### To save the current configuration:

1. Configure the device as required.
2. Click **Save**.  
The Save File window opens.
3. Browse to the required location to which to save the file.
4. Enter the required name for the saved preset.
5. Click **OK**.  
The current configuration is saved.



When using Chrome, the file is automatically saved in the Downloads folder.

The following parameters are saved to the configuration file:

| UI Page                                            | Parameter                                                                                                                                      |
|----------------------------------------------------|------------------------------------------------------------------------------------------------------------------------------------------------|
| Device Settings ( <a href="#">Figure 7.4</a> )     | Model Name<br>Time Zone<br>Daylight Savings Time mode<br>Use Time Server mode<br>Time Server Address<br>Sync Every Day time                    |
| Communication ( <a href="#">Figure 7.5</a> )       | UDP Port<br>TCP Port                                                                                                                           |
| Serial Port Setting ( <a href="#">Figure 7.6</a> ) | Serial Port<br>Protocol<br>IP Port<br>TCP Keep Alive<br>Parity<br>Data Bits<br>Baud Rate<br>Stop Bits<br>Send Replies to New Client by Default |
| GPIO Port Settings ( <a href="#">Figure 7.7</a> )  | GPIO Port<br>Trigger Type<br>Pull-up Resistor<br>Threshold VDC Range Min<br>Threshold VDC Range Max<br>Maximum Reported Steps                  |

## 7.2 Setting the Port Types

The Ports Type Setting matrix displays the current port mode and locking state settings, as set via the front panel buttons.

**To set the port mode:**

- Click the table at the intersection of the port and the desired mode. The selected table cell turns blue.
- To lock or unlock the setting, click the Locked or Unlocked port button.

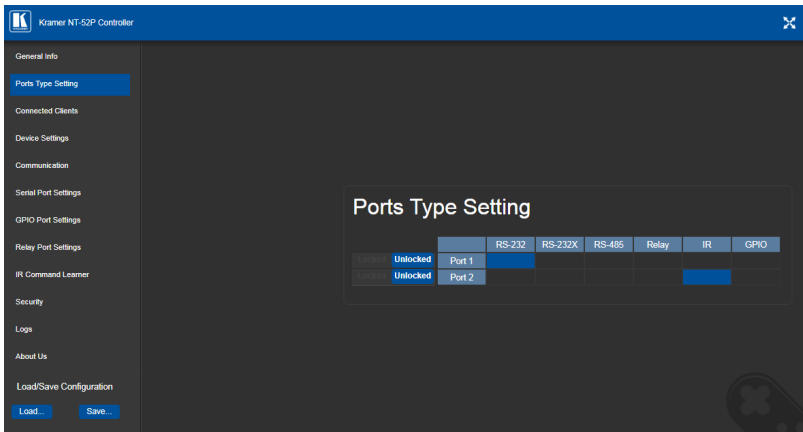


Figure 10: Ports Type Setting Page



The text on the LCD displays can indicate different configurations set using the Web UI.

## 7.3 Displaying Connected Clients

The Connected Clients page ([Figure 11](#)) allows you to view the following details of any client devices connected via Ethernet to the **NT-52P**:

- IP address
- The port it is connected to
- Method of connection
- Whether or not Send Replies is enabled for the port

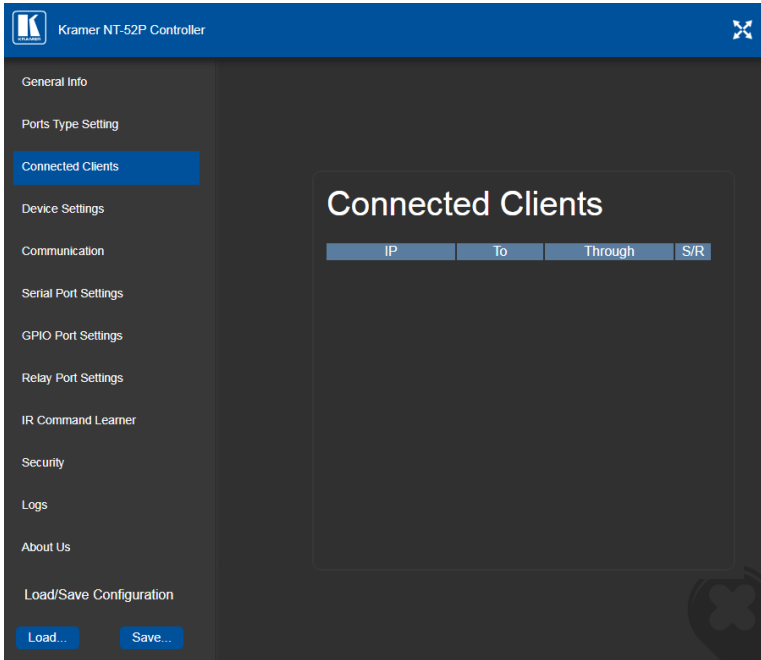


Figure 11: Connected Clients Page

## 7.4 Setting Device Name and Time Functions

The Device Settings page ([Figure 12](#)) allows you to view the model name and time server status. You can also modify the following fields:

- Device name
- Device time, date, and time zone
- Use a timeserver to set the time and date automatically using a (if the device is connected to the Internet), including the Time Zone and daylight savings time

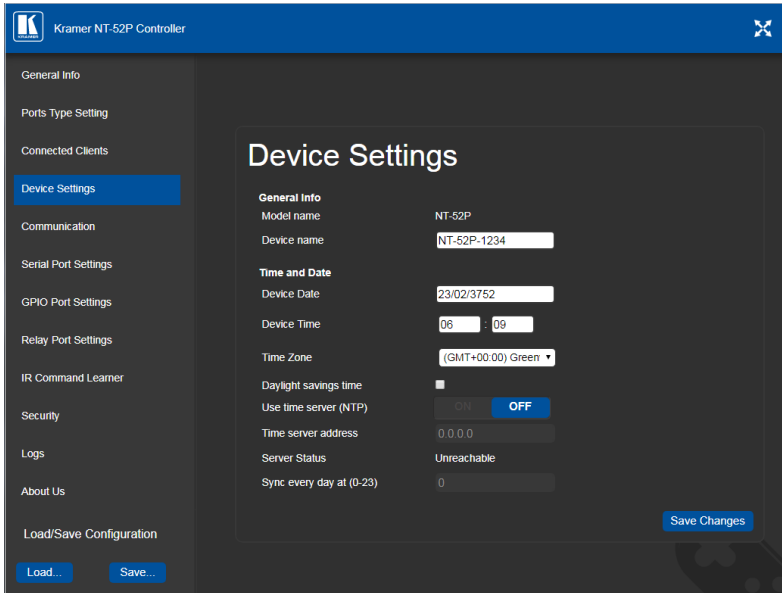


Figure 12: Device Settings Page

The **NT-52P** has a built-in clock that can synchronize with a Time Server if required.

**To enable Time Server synchronization:**

1. Browse to the Device Settings page by clicking Device Settings.  
The Device Settings page is displayed as shown in [Figure 12](#).
2. Click the Use Time Server **ON** button.
3. Enter the IP address of the Time Server.
4. Enter the time of day at which the **NT-52P** should synchronize with the Time Server.
5. Click **Save Changes**.

## 7.5 Setting Communication Parameters

The communication page allows you to:

- Turn DHCP for the device on and off
- Edit the IP settings for static IP addressing



The default IP address setting for the device is DHCP.

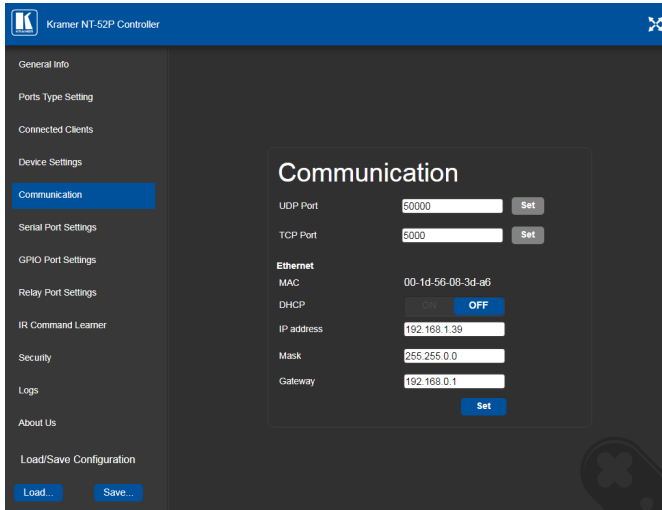


Figure 13: Communication Page

After modifying any of the IP settings, click **Set** to save the changes.

## 7.6 Setting Serial Port Parameters

The Serial Port Settings page differs according to the selected port type and allows you to:

- Select the serial port
- Set the following Ethernet parameters for each selected serial port:
  - Select TCP or UDP
  - IP port label
  - Enable or disable RS-485 termination



- TCP keep alive time – 0-3600sec (default 60sec) internal time, after which detected idle connection is disconnected
- Set the following serial parameters for each serial port:
  - Parity
  - Data bits
  - Baud rate
  - Stop bits
- Select whether or not to send replies on the port to the new client

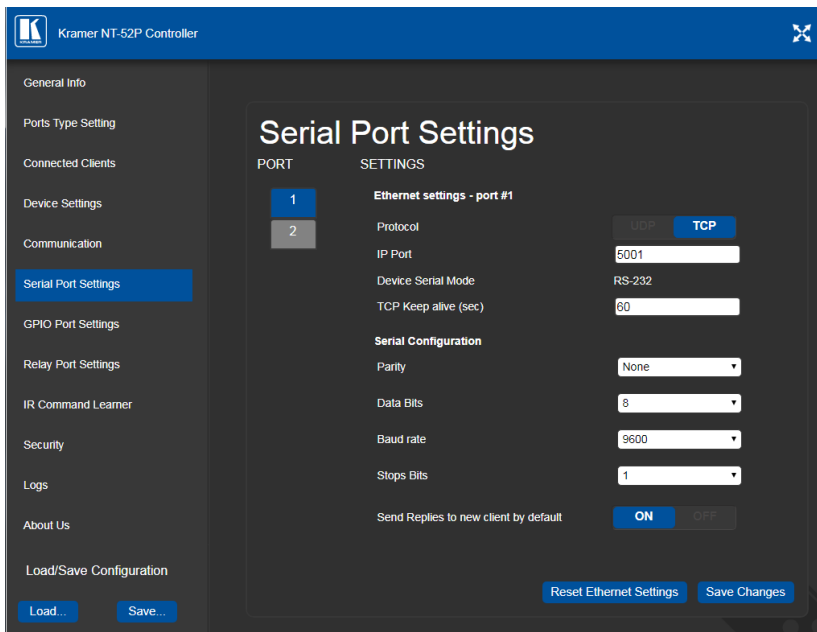


Figure 14: Serial Port Settings Page – RS-232 Port Type

To toggle RS-485 termination:

- Verify that an RS-485 port type is selected (see [Section 7.2](#)) and click to enable or disable termination.

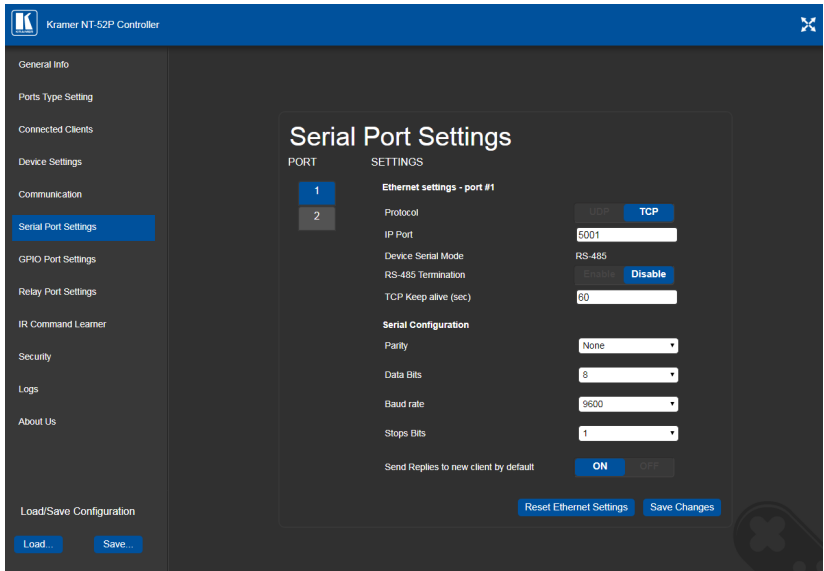


Figure 15: Serial Port Settings Page – RS-485 Port Type

## 7.7 Setting GPIO Port Parameters

GPIO ports are used to connect and control hardware devices to the **NT-52P** such as sensors, switches and LED indicators that input and output digital signals and input analog signals.

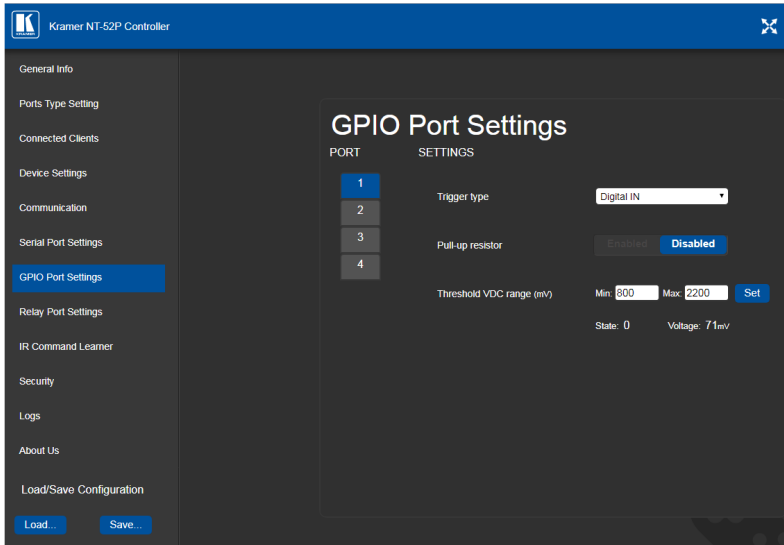


Figure 16: GPIO Port Settings Page

The GPIO Port Setting page allows you to configure the following for each selected GPIO port:

- Trigger type—digital input, digital output, or analog input
- Enable and disable the pull-up resistor for the digital input and output
- Set the threshold trigger voltage range for the digital input
- Set the current status for the digital output signal to high or low
- Set the maximum number of reported steps for the analog input
- Read—Press to read the state of the port
- State—Displays the digital state of the port, either 1 (high) or 0 (low)

GPIO sub-port states are displayed according to the mode settings of their associated port.



The default parameter settings change depending on which trigger type is selected.

### 7.7.1 Setting Digital In Trigger Parameters

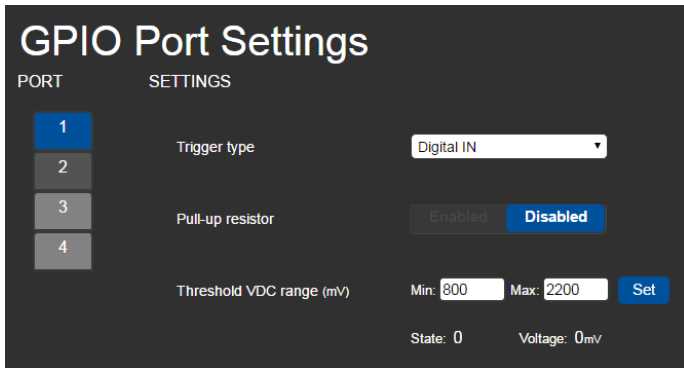


Figure 17: GPIO Port Settings Page Digital IN

Set the trigger type to Digital In (default). With this selection, the digital input trigger mode reads the digital input of an external sensor device that is connected to the GPIO port. It detects high (upon passing Max. threshold from Low state, default 2.2V) or low (upon passing Min threshold from High state, default 0.8V) port states according to the user defined voltage threshold levels:

- Pull-up resistor enabled (default)  
Detects an open circuit as High, or a short to ground as Low. This is suitable for example, for a pushbutton switch (connecting one terminal of the switch to ground, and the other to the input) or for an alarm closing a circuit that activates a series of actions.  
When the pull-up is enabled, the port state is high and to be triggered it must be pulled low by the externally connected sensor.
- Pull-up resistor disabled  
Suitable, for example, for a high-temperature alarm that exceeds the maximum voltage threshold.  
When disabled, the port state is low and to be triggered it must be pulled high by the externally connected sensor.

## 7.7.2 Setting Digital Out Trigger Parameters

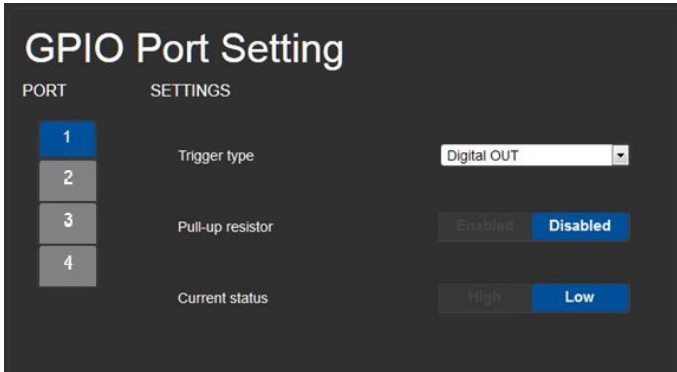


Figure 18: GPIO Port Settings Page Digital OUT

Set the trigger type to Digital Out. With this selection, the external device, (for example, an electric blind) is controlled by the **NT-52P**.

When selecting the Digital Out trigger type, the warning popup shown in Figure 19 is displayed.

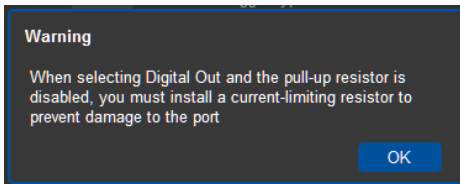


Figure 19: Digital Out Selection Warning Popup

The digital output mode function is defined by the pull-up resistor setup:

- Pullup resistor enabled:  
The port is used for controlling external devices such as room or light switches. The external source device determines the voltage output; the maximum voltage is 30V DC and the maximum current is 100mA.



Ensure that the current in this configuration does not exceed 100mA!

When enabled, the port state is high by default. For the state to be low, you must click Low from the Current Status.

- Pullup resistor disabled (default):  
The port can be used for controlling devices that accept a TTL signal such as for powering LEDs. The voltage output is TTL positive logic: open: ~ 3.5V; closed: ~ 0.3V.

When disabled, the port state is low by default and to set it high, you must click High from the Current Status.

### 7.7.3 Setting Analog In Trigger Parameters

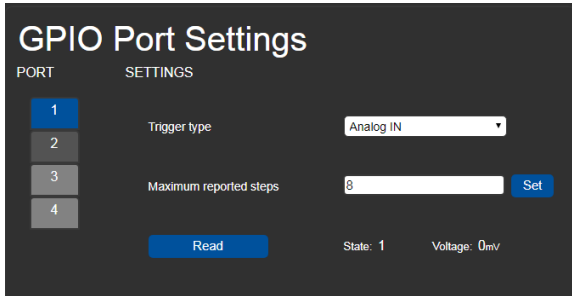


Figure 20: GPIO Port Settings Page Analog IN

Set the trigger type to Analog In. With this selection, the port is triggered by an analog external device, such as, a volume control device. The trigger is activated once when the detected voltage is within 0 to 30V DC voltage range.

You can select the number of steps, from 1 to 100 (default 8), into which the analog input signal is divided. The voltage of each step is dependent on the number of steps selected. Individual step voltage equals 30V divided by the number of steps.

When selecting the Analog In trigger type, the Pullup resistor and Threshold settings are disabled.

## 7.8 Setting Relay Port Status

The Relay Port Settings page allows you to turn the relay on and off to control relay-driven devices such as shades, projection screens and lighting systems, for each selected relay port.

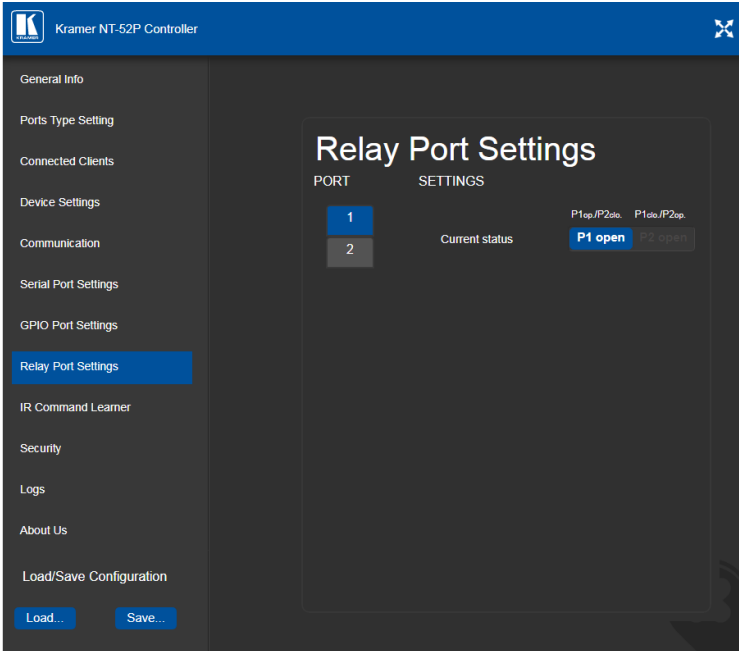


Figure 21: Relay Port Settings Page

The relay ports have the following characteristics:

- Rated at 30V DC and 1A
- Default state of normally open
- A non-latching relay function, that is, the contact is left open when unpowered or on power up state. This means that if a relay is closed and power is lost, the relay returns to its default state. To return it to its pre-power loss state, the setting must be changed using either the Web UI or a Protocol 3000 command

### To close a relay, (for example, relay 2):

1. On the Relay Port Setting page, click Port button 2.  
The current relay status of port 2 is shown to the right of the button.
2. Click Close.  
The relay closes, the button changes color, and the port 2 white activity LED on the front panel lights. See [Table 1](#) for more information.

## 7.9 Configuring IR Command Learning

The IR Command Learner page allows you to teach the **NT-52P** IR commands. These can be saved for later use.



While learning is in progress, the two blue and white activity LEDs of both ports light and the **NT-52P** is not available for normal operation.

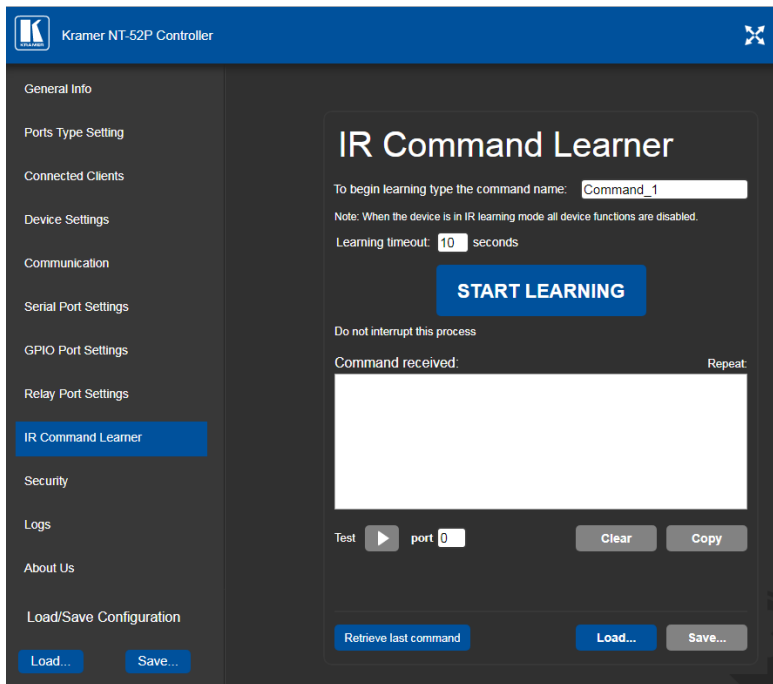


Figure 22: IR Command Learner Page



| Feature                                | Function                                                                                                                                                                    |
|----------------------------------------|-----------------------------------------------------------------------------------------------------------------------------------------------------------------------------|
| Command Name Field                     | Enter the required name for the command                                                                                                                                     |
| Learning Timeout                       | Set the time to elapse before the learning mode is exited if no command is received                                                                                         |
| Start Learning Button                  | Press to start the learning process.<br><b>Note:</b> While learning is in progress, the four IR Out LEDs light and the <b>NT-52P</b> is not available for normal operation. |
| Command Received Window                | Displays the command string received during the process. This command can be copied/pasted to another application                                                           |
| Test Button and Port Selection Spinner | Select the port on which to test the learned command and press the Test button to start the test                                                                            |
| Retrieve Last Command Button           | Press to retrieve that last command learned                                                                                                                                 |
| Clear/Copy Buttons                     | Press to clear or copy the command received                                                                                                                                 |
| Load/Save Buttons                      | Press Load to retrieve a previously saved command. Press Save to save the current command                                                                                   |

## 7.10 Activating Security

The Security page allows you to turn logon authentication on or off.

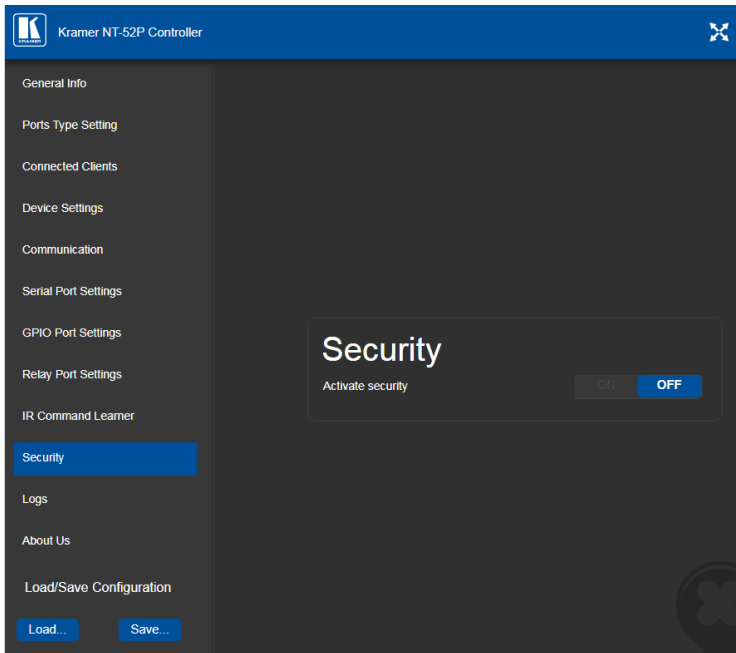


Figure 23: Security Page

When security is on, access to the Web UI is granted only on submission of a valid user and password. The default user ID is **Admin** and the password is **Admin**.

**To activate Web UI security:**

1. On the Security page, click ON.

The confirmation popup is displayed as shown in [Figure 24](#).

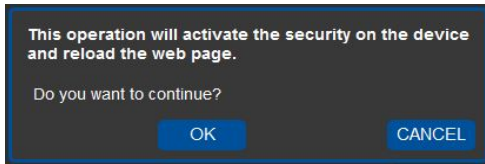


Figure 24: Security Confirmation Popup

2. Click **OK**.

The Authentication Required popup is displayed as shown in [Figure 25](#).

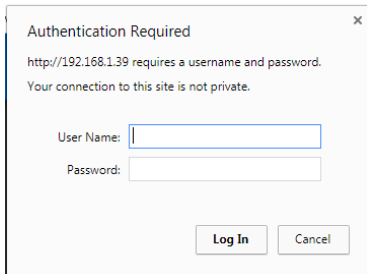


Figure 25: Authentication Required Popup

3. Enter the default username and password.
4. Click **OK**.
5. Wait until the Web UI has reloaded. Click the Security page button.  
The page show in [Figure 26](#) is displayed.

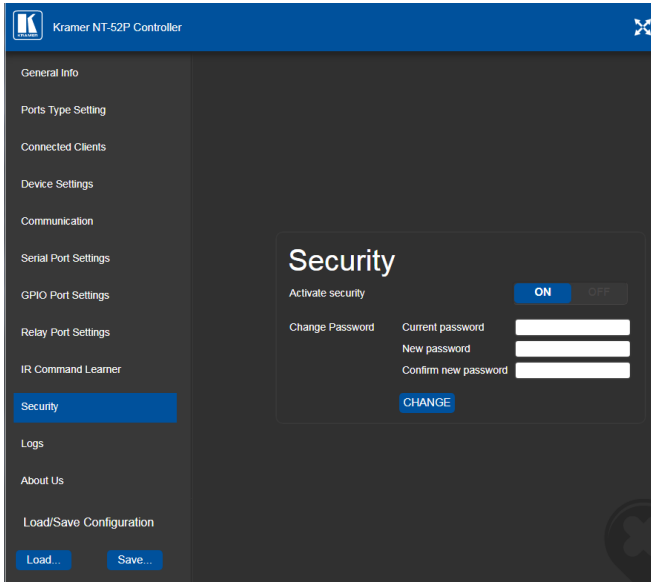


Figure 26: Security Activated Page

6. If required, click **OFF** to turn security off, or change the password and click **Change**.

## 7.11 Using the Logs Page

The Logs page allows you to:

- View current logs
- Configure the logs
- Filter the logs

Kramer NT-52P Controller
✕

General Info

Ports Type Setting

Connected Clients

Device Settings

Communication

Serial Port Settings

GPIO Port Settings

Relay Port Settings

IR Command Learner

Security

Logs

About Us

Load/Save Configuration

Load...

Save...

## Logs

| Date       | Time     | Type    | Client    | Event                                                      |
|------------|----------|---------|-----------|------------------------------------------------------------|
| 3752-02-23 | 06:15:59 | ERROR   | II        | IO Expander Error: illegal port number                     |
| 3752-02-23 | 06:15:59 | ERROR   | II        | IO Expander Error: illegal port number                     |
| 3752-02-23 | 06:14:44 | INFO    | [Relay]   | RELAY : write command done for relay 2                     |
| 3752-02-23 | 06:14:44 | INFO    | [HW GPIO] | HW_GPIO : Port 2 moved to disable mode                     |
| 3752-02-23 | 06:14:44 | WARNING | [HW GPIO] | HW_GPIO warning: Gpio 4 - Tried to change to the same mode |
| 3752-02-23 | 06:14:44 | WARNING | [HW GPIO] | HW_GPIO warning: Gpio 3 - Tried to change to the same mode |
| 3752-02-23 | 06:14:32 | INFO    | [Relay]   | RELAY : write command done for relay 1                     |
| 3752-02-23 | 06:14:32 | INFO    | [HW GPIO] | HW_GPIO : Port 1 moved to disable mode                     |
| 3752-02-23 | 06:14:32 | WARNING | [HW GPIO] | HW_GPIO warning: Gpio 2 - Tried to change to the same mode |
| 3752-02-23 | 06:13:24 | ERROR   | [Relay]   | RELAY Error: Got user command while port is not relay type |
| 3752-02-23 | 06:12:21 | INFO    | [HW GPIO] | HW_GPIO : Port 2 moved to enable mode                      |
| 3752-02-23 | 06:12:05 | INFO    | [HW GPIO] | HW_GPIO : Port 1 moved to enable mode                      |
| 3752-02-23 | 04:40:56 | INFO    | [HW GPIO] | HW_GPIO : Port 2 moved to disable mode                     |
| 3752-02-23 | 04:40:56 | WARNING | [HW GPIO] | HW_GPIO warning: Gpio 4 - Tried to change to the same mode |
| 3752-02-23 | 04:40:56 | WARNING | [HW GPIO] | HW_GPIO warning: Gpio 3 - Tried to change to the same mode |

**LOG FILTER**

Device Control

Tx Data

Rx Data

Relay Data

GPIO Data

IR Data

Errors

**LOG CONFIG**

Device Control

Tx Data

Rx Data

Relay Data

GPIO Data

IR Data

Refresh

Figure 27: Logs Page

The display may not update automatically. Click Refresh to update the display.

Use the Log Filter check-boxes to select which events to display from the log. Use the Log Config check-boxes to select which events are recorded.

## 7.12 Kramer Information

The About Us page displays the Web UI version and the Kramer company details.

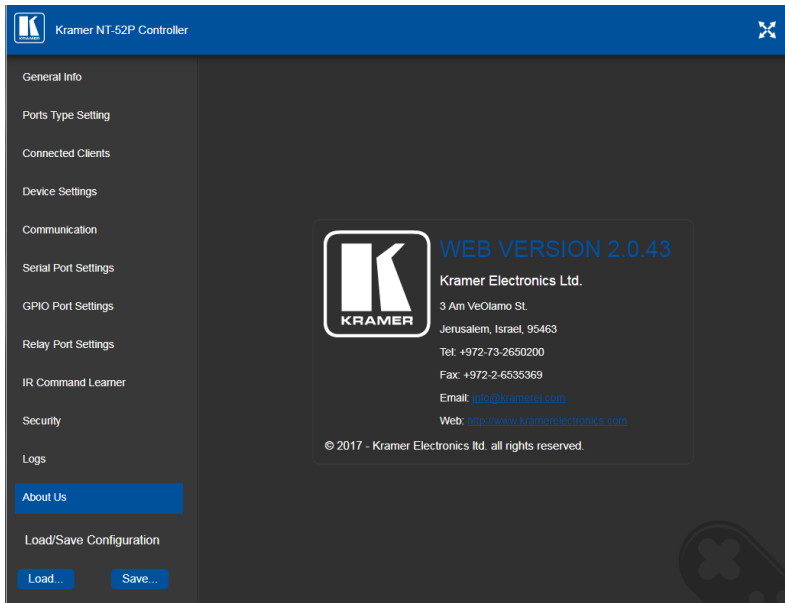


Figure 28: About Us Page

---

## 8 Using NT-52P Operations

This section explains how to use IR learning, reset the device and upgrade device firmware.

### 8.1 IR Learning

**At the start and end of learning a message is sent to all attached clients.**

To perform IR learning, the IR remote control must be approximately five to seven centimeters (2" and 2.7") from the **NT-52P** front panel.



While learning is in progress, the **NT-52P** is not available for normal operation.

**To teach the NT-52P an IR command:**

1. Put the **NT-52P** in IR Learning mode either by sending the Protocol 3000 command, (see [Section 11.2](#)) or by using the Web pages, (see [Section 7.9](#)). The device is no longer in normal operation, and the **NT-52P** sends an IR Learning start message to all connected clients.
2. Using the IR remote control, send the required command to the **NT-52P**. The **NT-52P** processes the IR detected signal and generates the signal-associated pronto code to be used by the driver. When using the Web page for IR learning, the **NT-52P** also displays the learned command code on screen. (This command can be copied/pasted to other applications, for example, control software when creating a driver.) The **NT-52P** then sends the IR Learning stop message to all connected clients to indicate return to normal operation.
3. Optional—Test the command if using the IR Learning Web page. Test results are displayed on screen.
4. Save the learned command.

## 8.2 Resetting to the Factory Default Settings

To reset the device to its factory default settings:

1. Turn off the power to the device.
2. Press and hold the Reset button on the front panel.
3. Turn on the power to the device while holding down the Reset button for a few seconds.
4. Release the button.  
The device is reset to the factory default settings.

## 8.3 Upgrading the Firmware

For instructions on upgrading the firmware see the "*Kramer K-Upload User Manual*".

## 9 Technical Specifications

|                                                                                                               |                                                                                     |                                                                                                                                                 |
|---------------------------------------------------------------------------------------------------------------|-------------------------------------------------------------------------------------|-------------------------------------------------------------------------------------------------------------------------------------------------|
| Ports                                                                                                         | 2 RS-232/IR universal-I/O ports on 3-pin terminal blocks each selectable as one of: | 1 bidirectional RS-232 serial<br>1 crossed bidirectional RS-232 serial<br>1 bidirectional RS-485 serial<br>2 IR emitters<br>2 GPI/O<br>2 relays |
|                                                                                                               | 1 LAN                                                                               | On an RJ-45 connector                                                                                                                           |
|                                                                                                               | 1 IR sensor                                                                         | For IR learning                                                                                                                                 |
|                                                                                                               | 1 micro USB connector                                                               | For programming                                                                                                                                 |
| Serial                                                                                                        | Serial port baud rates                                                              | 1200, 2400, 4800, 9600, 19200, 38400, 57600, 15200bps                                                                                           |
|                                                                                                               | RS-232 communication                                                                | Transparent up to 115200bps                                                                                                                     |
| IR                                                                                                            | IR emitter cable range                                                              | 80m (260ft)                                                                                                                                     |
|                                                                                                               | IR output frequencies                                                               | 20kHz to 1.2MHz                                                                                                                                 |
|                                                                                                               | IR input frequencies                                                                | 20kHz to 60kHz                                                                                                                                  |
| Data and Connections                                                                                          | Maximum data handling of device                                                     | Up to 150kbps (summed on all ports, see <a href="#">Section 9.1</a> )                                                                           |
|                                                                                                               | Maximum simultaneous IP-client connections                                          | 40                                                                                                                                              |
| Power                                                                                                         | Power consumption                                                                   | 12V DC, 220mA                                                                                                                                   |
| Cooling                                                                                                       | Convection ventilation                                                              |                                                                                                                                                 |
| Environmental Conditions                                                                                      | Operating temperature                                                               | 0° to +40°C (32° to 104°F)                                                                                                                      |
|                                                                                                               | Storage temperature                                                                 | -40° to +70°C (-40° to 158°F)                                                                                                                   |
|                                                                                                               | Humidity                                                                            | 10% to 90%, RHL non-condensing                                                                                                                  |
| Regulatory Compliance                                                                                         | Vibration                                                                           | ISTA 1A in carton (International Safe Transit Association)                                                                                      |
|                                                                                                               | Safety                                                                              | CE                                                                                                                                              |
|                                                                                                               | Environmental                                                                       | RoHs, WEEE                                                                                                                                      |
| General                                                                                                       | Enclosure type                                                                      | Aluminum                                                                                                                                        |
|                                                                                                               | Net dimensions                                                                      | 12cm x 7.15cm x 2.44cm (4.7" x 2.8" x 1.0") W, D, H.                                                                                            |
|                                                                                                               | Net weight                                                                          | 0.18kg (0.4lbs) approx.                                                                                                                         |
|                                                                                                               | Shipping dimensions                                                                 | 15.7cm x 12cm x 8.7cm (6.2" x 4.7" x 3.4") W, D, H.                                                                                             |
|                                                                                                               | Shipping weight                                                                     | 0.82kg (1.76lbs) approx.                                                                                                                        |
| Accessories                                                                                                   | Included                                                                            | 12V DC power adapter, bracket set                                                                                                               |
|                                                                                                               | Optional                                                                            | RK-3T 19" rack adapter, IR and serial cables – see <a href="http://www.kramerav.com/product/NT-52P">www.kramerav.com/product/NT-52P</a>         |
| Specifications are subject to change without notice at <a href="http://www.kramerav.com">www.kramerav.com</a> |                                                                                     |                                                                                                                                                 |



## 9.1 Data Handling Performance

The **NT-52P** is designed to support mainly AV-relevant RS-232 communication.

These devices must have overall data bandwidth limits high enough in most AV installations to support the required communication bandwidth.

In extremely demanding cases, we recommend that you take into account the bandwidth limitations.

The total sustained data bandwidth that each device can handle for all ports simultaneously is 150kbps.

## 9.2 Example Bandwidth Calculation

The **NT-52P** has two serial ports. Each serial port can support up to:

- $150\text{kbps} / 2 = 75\text{kbps}$

If each protocol command is 100 bytes, (that is, 800 bits), you can safely send and receive a minimum of 96 commands per second on each serial port. This is shown using the following calculation:

$$(150\text{kbps} * 1024) / 800 \text{ bits} / 2 = 96$$

The same calculation applies to all devices. A similar calculation applies when fewer ports are used at the same time where a higher bandwidth per port can be achieved.

In critical applications requiring a lossless data transfer, we recommend that communication on all the other ports is stopped when making a long file transfer (for example, when performing a firmware upgrade via one of the serial ports).

## 10 Default Parameters

| RS-232     |        |
|------------|--------|
| Baud Rate: | 115200 |
| Data Bits: | 8      |
| Stop Bits: | 1      |
| Parity:    | None   |



The **NT-52P** is dispatched from the factory with DHCP enabled and a random IP address. After performing a factory reset, the DHCP and the IP address are set to the values shown below.

| Ethernet                          |                                                                                       |
|-----------------------------------|---------------------------------------------------------------------------------------|
| DHCP:                             | Off                                                                                   |
| IP Address:                       | 192.168.1.39                                                                          |
| Host Name:                        | NT-52P-xxxx<br>where xxxx are the last four digits of the serial number of the device |
| Subnet Mask:                      | 255.255.0.0                                                                           |
| Gateway:                          | 192.168.0.1                                                                           |
| Maximum Simultaneous Connections: | 40                                                                                    |
| TCP Port 1:                       | 5001                                                                                  |
| TCP Port 2:                       | 5002                                                                                  |
| UDP Port:                         | 50000                                                                                 |

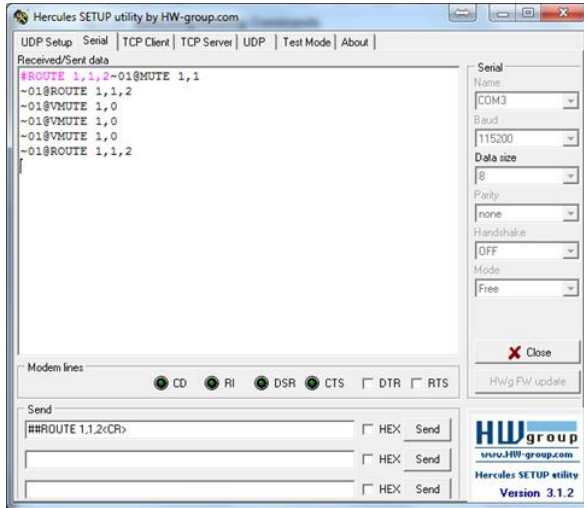
### Default Logon Authentication

| Web UI Access |       |
|---------------|-------|
| User name:    | Admin |
| Password:     | Admin |

# 11 Kramer Protocol 3000

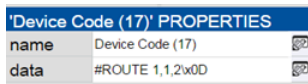
The **NT-52P** can be operated using the Kramer Protocol 3000 serial commands. The command framing varies according to how you interface with the **NT-52P**. For example, a basic video input switching command that routes a layer 1 video signal to HDMI out 1 from HDMI input 2 (`ROUTE 1,1,2`), is entered as follows:

- Terminal communication software, such as Hercules:

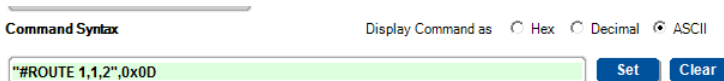


The framing of the command varies according to the terminal communication software.

- K-Touch Builder (Kramer software):



- K-Config (Kramer configuration software):



All the examples provided in this section are based on using the K-Config software.

You can enter commands directly using terminal communication software (e.g., Hercules) by connecting a PC to the serial or Ethernet port on the **NT-52P**. To enter **CR** press the Enter key (**LF** is also sent but is ignored by the command parser).

Commands sent from various non-Kramer controllers (e.g., Crestron) may require special coding for some characters (such as, /x##). For more information, refer to your controller's documentation.

## 11.1 Kramer Protocol 3000 – Syntax

### 11.1.1 Host Message Format

| Start | Address (optional)     | Body           | Delimiter |
|-------|------------------------|----------------|-----------|
| #     | <i>Destination_id@</i> | <b>Message</b> | <b>CR</b> |

#### 11.1.1.1 Simple Command

Command string with only one command without addressing:

| Start | Body                                                        | Delimiter |
|-------|-------------------------------------------------------------|-----------|
| #     | <b>Command</b> <b>SP</b> <i>Parameter_1,Parameter_2,...</i> | <b>CR</b> |

#### 11.1.1.2 Command String

Formal syntax with commands concatenation and addressing:

| Start | Address                | Body                                                                                                                                                                        | Delimiter |
|-------|------------------------|-----------------------------------------------------------------------------------------------------------------------------------------------------------------------------|-----------|
| #     | <i>Destination_id@</i> | <b>Command_1</b> <i>Parameter1_1,Parameter1_2,...</i><br><b>Command_2</b> <i>Parameter2_1,Parameter2_2,...</i><br><b>Command_3</b> <i>Parameter3_1,Parameter3_2,...</i> ... | <b>CR</b> |

### 11.1.2 Device Message Format

| Start | Address (optional) | Body           | Delimiter    |
|-------|--------------------|----------------|--------------|
| ~     | <i>Sender_id@</i>  | <b>Message</b> | <b>CR LF</b> |

#### 11.1.2.1 Device Long Response

Echoing command:

| Start | Address (optional) | Body                                                                 | Delimiter    |
|-------|--------------------|----------------------------------------------------------------------|--------------|
| ~     | <i>Sender_id@</i>  | <b>Command</b> <b>SP</b> [ <i>Param1 ,Param2 ...</i> ] <b>result</b> | <b>CR LF</b> |

**CR** = Carriage return (ASCII 13 = 0x0D)

**LF** = Line feed (ASCII 10 = 0x0A)

**SP** = Space (ASCII 32 = 0x20)

### 11.1.3 Command Terms

#### Command

A sequence of ASCII letters ('A'-'Z', 'a'-'z' and '-').

Command and parameters must be separated by at least one space.

#### Parameters

A sequence of alphanumeric ASCII characters ('0'-'9', 'A'-'Z', 'a'-'z' and some special characters for specific commands). Parameters are separated by commas.

#### Message string

Every command entered as part of a message string begins with a **message starting character** and ends with a **message closing character**.

**Note:** A string can contain more than one command. Commands are separated by a pipe ( '|') character.

#### Message starting character

'#' – For host command/query

'~' – For device response

#### Device address (Optional, for K-NET)

K-NET Device ID followed by '@'

#### Query sign

'?' follows some commands to define a query request.

#### Message closing character

**CR** – For host messages; carriage return (ASCII 13)

**CRLF** – For device messages; carriage return (ASCII 13) + line-feed (ASCII 10)

#### Command chain separator character

When a message string contains more than one command, a pipe ( '|') character separates each command.

Spaces between parameters or command terms are ignored.

#### 11.1.4 Entering Commands

You can directly enter all commands using a terminal with ASCII communications software, such as HyperTerminal, Hercules, etc. Connect the terminal to the serial or Ethernet port on the Kramer device. To enter **CR** press the Enter key. (**LF** is also sent but is ignored by command parser).

For commands sent from some non-Kramer controllers like Crestron, some characters require special coding (such as, /X##). Refer to the controller manual.

#### 11.1.5 Command Forms

Some commands have short name syntax in addition to long name syntax to allow faster typing. The response is always in long syntax.

#### 11.1.6 Chaining Commands

Multiple commands can be chained in the same string. Each command is delimited by a pipe character ("|"). When chaining commands, enter the **message starting character** and the **message closing character** only once, at the beginning of the string and at the end.

Commands in the string do not execute until the closing character is entered.

A separate response is sent for every command in the chain.

#### 11.1.7 Maximum String Length

64 characters

## 11.2 Kramer Protocol 3000 – Command List

| Command          | Description                                    |
|------------------|------------------------------------------------|
| #                | Protocol handshaking                           |
| BUILD-DATE       | Read device build date                         |
| COM-ROUTE        | Set/get tunneling port routing                 |
| COM-ROUTE-ADD    | Add communication route tunnel connection      |
| COM-ROUTE-REMOVE | Remove communication route tunnel connection   |
| DEL              | Deletes a file                                 |
| DIR              | List files                                     |
| ETH-PORT         | Sets protocol port                             |
| ETH-TUNNEL       | Get parameters for open tunnels                |
| FACTORY          | Restart the machine with the default           |
| FORMAT           | Format the file system                         |
| FS-FREE          | Print free file space                          |
| GET              | Get file content                               |
| GPIO-CFG         | Set/get HW GPIO configuration                  |
| GPIO-STATE       | Set/get HW GPIO state                          |
| GPIO-STEP        | Set/get HW GPIO step                           |
| GPIO-THR         | Set/get HW GPIO threshold voltage              |
| GPIO-VOLT        | Get HW GPIO voltage level                      |
| HELP             | List of commands                               |
| IR-LEARN         | Send IR learning command                       |
| IR-SND           | Send IR command to port                        |
| IR-STOP          | Stop IR command to port                        |
| LOGIN            | Set/get protocol permission                    |
| LOGOUT           | Demotes the terminal security level to minimum |
| MACH-NUM         | Set device ID                                  |
| MODEL            | Read device model                              |
| NAME             | Set/get device (DNS) name                      |
| NAME-RST         | Reset device name to default                   |
| NET-DHCP         | Set/get DHCP mode                              |
| NET-GATE         | Set/get gateway IP                             |
| NET-IP           | Set/get device IP address                      |
| NET-MAC          | Get the MAC address                            |
| NET-MASK         | Set/get the device subnet mask                 |
| PASS             | Set/get the password for login level           |
| PORT-LOCK        | Set/get the port lock state                    |
| PORT-TYPE        | Set/get the port type                          |
| PROT-VER         | Get protocol version                           |
| RELAY-STATE      | Set/get relay state                            |
| RESET            | Reset device                                   |
| SECUR            | Set/get current security state                 |
| SN               | Get device serial number                       |
| TIME             | Set/get the time                               |
| TIME-LOC         | Set/get local time offset from UTC/GMT         |

| Command  | Description                              |
|----------|------------------------------------------|
| TIME-SRV | Set/get time synchronization from server |
| UART     | Set/get a port serial parameters         |
| VERSION  | Get firmware version number              |

## 11.3 Kramer Protocol 3000 – Detailed Commands

This section lists the detailed commands applicable to the NT-52P.

### 11.3.1 #

| Functions                                                                                                                                               |                      | Permission        | Transparency |
|---------------------------------------------------------------------------------------------------------------------------------------------------------|----------------------|-------------------|--------------|
| Set:                                                                                                                                                    | #                    | End User          | Public       |
| Get:                                                                                                                                                    | -                    | -                 | -            |
| Description                                                                                                                                             |                      | Syntax            |              |
| Set:                                                                                                                                                    | Protocol handshaking | # <code>CR</code> |              |
| Get:                                                                                                                                                    | -                    | -                 |              |
| Response                                                                                                                                                |                      |                   |              |
| ~ <code>nn</code> @ <code>SE</code> OK <code>CR LF</code>                                                                                               |                      |                   |              |
| Parameters                                                                                                                                              |                      |                   |              |
|                                                                                                                                                         |                      |                   |              |
| Response Triggers                                                                                                                                       |                      |                   |              |
|                                                                                                                                                         |                      |                   |              |
| Notes                                                                                                                                                   |                      |                   |              |
| Validates the Protocol 3000 connection and gets the machine number<br>Step-in master products use this command to identify the availability of a device |                      |                   |              |
| K-Config Example                                                                                                                                        |                      |                   |              |
| `#", 0x0D`                                                                                                                                              |                      |                   |              |



### 11.3.2 BUILD-DATE

| Functions                                                                                                                                               |                       | Permission             | Transparency |
|---------------------------------------------------------------------------------------------------------------------------------------------------------|-----------------------|------------------------|--------------|
| Set:                                                                                                                                                    | -                     | -                      | -            |
| Get:                                                                                                                                                    | BUILD-DATE?           | End User               | Public       |
| Description                                                                                                                                             |                       | Syntax                 |              |
| Set:                                                                                                                                                    | -                     | -                      |              |
| Get:                                                                                                                                                    | Get device build date | #BUILD-DATE? <b>CR</b> |              |
| Response                                                                                                                                                |                       |                        |              |
| ~ <b>nn</b> @BUILD-DATE <b>SP</b> date <b>SE</b> time <b>CR LF</b>                                                                                      |                       |                        |              |
| Parameters                                                                                                                                              |                       |                        |              |
| <i>date</i> – Format: YYYY/MM/DD where YYYY = Year, MM = Month, DD = Day<br><i>time</i> – Format: hh:mm:ss where hh = hours, mm = minutes, ss = seconds |                       |                        |              |
| Response Triggers                                                                                                                                       |                       |                        |              |
|                                                                                                                                                         |                       |                        |              |
| Notes                                                                                                                                                   |                       |                        |              |
|                                                                                                                                                         |                       |                        |              |
| K-Config Example                                                                                                                                        |                       |                        |              |
| `#BUILD-DATE?`,0x0D                                                                                                                                     |                       |                        |              |

### 11.3.3 COM-ROUTE

| Functions                                                                                                                                                                                                                                                                                                                                                                    |                            | Permission                                                                                            | Transparency |
|------------------------------------------------------------------------------------------------------------------------------------------------------------------------------------------------------------------------------------------------------------------------------------------------------------------------------------------------------------------------------|----------------------------|-------------------------------------------------------------------------------------------------------|--------------|
| Set:                                                                                                                                                                                                                                                                                                                                                                         | COM-ROUTE                  | Administrator                                                                                         | Internal     |
| Get:                                                                                                                                                                                                                                                                                                                                                                         | COM-ROUTE?                 | End User                                                                                              | Internal     |
| Description                                                                                                                                                                                                                                                                                                                                                                  |                            | Syntax                                                                                                |              |
| Set:                                                                                                                                                                                                                                                                                                                                                                         | Set tunneling port routing | #COM-ROUTE <input type="checkbox"/> <input type="checkbox"/>                                          |              |
|                                                                                                                                                                                                                                                                                                                                                                              |                            | <i>COM_Num, portType, ETHPort, ETH_rep_en, TCP_keep_alive_timing</i> <input type="checkbox"/>         |              |
| Get:                                                                                                                                                                                                                                                                                                                                                                         | Get tunneling port routing | #COM-ROUTE? <input type="checkbox"/> <input type="checkbox"/> <i>COM_Num</i> <input type="checkbox"/> |              |
| Response                                                                                                                                                                                                                                                                                                                                                                     |                            |                                                                                                       |              |
| ~ <input type="checkbox"/> @COM-ROUTE <input type="checkbox"/> <i>COM_Num, portType, ETHPort, ETH_rep_en, TCP_keep_alive_timing</i> <input type="checkbox"/>                                                                                                                                                                                                                 |                            |                                                                                                       |              |
| Parameters                                                                                                                                                                                                                                                                                                                                                                   |                            |                                                                                                       |              |
| <p><i>COM_Num</i> – machine dependent<br/> <i>portType</i> – 1 (UDP), 2 (TCP)<br/> <i>ETHPort</i> – TCP/UDP port number<br/> <i>ETH_rep_en</i> – 1 (COM port sends replies to new clients), 0 (COM port does not send replies to new clients)<br/> <i>TCP_keep_alive_timing</i> – 0-3600 seconds – every x seconds the device sends an empty string to TCP client ("/0")</p> |                            |                                                                                                       |              |
| Response Triggers                                                                                                                                                                                                                                                                                                                                                            |                            |                                                                                                       |              |
|                                                                                                                                                                                                                                                                                                                                                                              |                            |                                                                                                       |              |
| Notes                                                                                                                                                                                                                                                                                                                                                                        |                            |                                                                                                       |              |
| This command sets tunneling port routing. Every com port can send or receive data from the ETH port. All com ports can be configured to the same ETH port.                                                                                                                                                                                                                   |                            |                                                                                                       |              |
| K-Config Example                                                                                                                                                                                                                                                                                                                                                             |                            |                                                                                                       |              |
| Set COM1 as RS-232, port 1, Eth port 1, send replies, keep alive 30 seconds:<br>"#COM-ROUTE 1,1,1,1,30",0x0D                                                                                                                                                                                                                                                                 |                            |                                                                                                       |              |

### 11.3.4 COM-ROUTE-ADD

| Functions                                                                                                                                                                                                                                                    |                                             | Permission                                                                      | Transparency |
|--------------------------------------------------------------------------------------------------------------------------------------------------------------------------------------------------------------------------------------------------------------|---------------------------------------------|---------------------------------------------------------------------------------|--------------|
| Set:                                                                                                                                                                                                                                                         | COM-ROUTE-ADD                               | Administrator                                                                   | Internal     |
| Get:                                                                                                                                                                                                                                                         | -                                           | -                                                                               | -            |
| Description                                                                                                                                                                                                                                                  |                                             | Syntax                                                                          |              |
| Set:                                                                                                                                                                                                                                                         | Add a communication route tunnel connection | #COM-ROUTE-ADD <input type="text" value="SP"/>                                  |              |
| Get:                                                                                                                                                                                                                                                         | -                                           | ComNum, PortType, EthPort, EthRepEn, Timeout <input type="text" value="CR LF"/> |              |
| <b>Response</b>                                                                                                                                                                                                                                              |                                             |                                                                                 |              |
| ~nn@COM-ROUTE-ADD <input type="text" value="SP"/> ComNum, PortType, EthPort, EthRepEn, Timeout <input type="text" value="CR LF"/>                                                                                                                            |                                             |                                                                                 |              |
| <b>Parameters</b>                                                                                                                                                                                                                                            |                                             |                                                                                 |              |
| ComNum – machine dependent<br>portType – 1 (UDP), 2 (TCP)<br>EthPort – TCP/UDP port number<br>EthRepEn – 1 (COM port sends replies to new clients), 0 (COM port does not send replies to new clients)<br>Timeout – Keep alive timeout in seconds (1 to 3600) |                                             |                                                                                 |              |
| <b>Response Triggers</b>                                                                                                                                                                                                                                     |                                             |                                                                                 |              |
|                                                                                                                                                                                                                                                              |                                             |                                                                                 |              |
| <b>Notes</b>                                                                                                                                                                                                                                                 |                                             |                                                                                 |              |
|                                                                                                                                                                                                                                                              |                                             |                                                                                 |              |
| <b>K-Config Example</b>                                                                                                                                                                                                                                      |                                             |                                                                                 |              |
| Add COM1 port as TCP, port 1, Eth port 1, send replies, keep alive 30 seconds:<br>`"#COM-ROUTE-ADD 1,1,1,1,30",0x0D`                                                                                                                                         |                                             |                                                                                 |              |

### 11.3.5 COM-ROUTE-REMOVE

| Functions                                                                                      |                                                | Permission                                                                               | Transparency |
|------------------------------------------------------------------------------------------------|------------------------------------------------|------------------------------------------------------------------------------------------|--------------|
| Set:                                                                                           | COM-ROUTE-REMOVE                               | Administrator                                                                            | Internal     |
| Get:                                                                                           | -                                              | -                                                                                        | -            |
| Description                                                                                    |                                                | Syntax                                                                                   |              |
| Set:                                                                                           | Remove a communication route tunnel connection | #COM-ROUTE-REMOVE <input type="text" value="SP"/> ComNum <input type="text" value="CR"/> |              |
| Get:                                                                                           | -                                              | -                                                                                        |              |
| <b>Response</b>                                                                                |                                                |                                                                                          |              |
| ~nn@COM-ROUTE-REMOVE <input type="text" value="SP"/> ComNum <input type="text" value="CR LF"/> |                                                |                                                                                          |              |
| <b>Parameters</b>                                                                              |                                                |                                                                                          |              |
| ComNum – machine dependent                                                                     |                                                |                                                                                          |              |
| <b>Response Triggers</b>                                                                       |                                                |                                                                                          |              |
|                                                                                                |                                                |                                                                                          |              |
| <b>Notes</b>                                                                                   |                                                |                                                                                          |              |
|                                                                                                |                                                |                                                                                          |              |
| <b>K-Config Example</b>                                                                        |                                                |                                                                                          |              |
| Remove comm port 1:<br>`"#COM-ROUTE-REMOVE 1",0x0D`                                            |                                                |                                                                                          |              |

### 11.3.6 DEL

| Functions                                                                     |             | Permission                                                | Transparency |
|-------------------------------------------------------------------------------|-------------|-----------------------------------------------------------|--------------|
| Set:                                                                          | DEL         | Administrator                                             | Public       |
| Get:                                                                          | -           | -                                                         | -            |
| Description                                                                   |             | Syntax                                                    |              |
| Set:                                                                          | Delete file | #DEL <code>[SP]</code> <i>file_name</i> <code>[CR]</code> |              |
| Get:                                                                          |             |                                                           |              |
| Response                                                                      |             |                                                           |              |
| ~ <code>[nn]</code> @DEL <code>[SP]</code> <i>file_name</i> <code>[CR]</code> |             |                                                           |              |
| Parameters                                                                    |             |                                                           |              |
| <i>file_name</i> - name of file to delete (file names are case-sensitive)     |             |                                                           |              |
| Response Triggers                                                             |             |                                                           |              |
|                                                                               |             |                                                           |              |
| K-Config Example                                                              |             |                                                           |              |
| Delete a file named "test":<br>"DEL test",0x0D                                |             |                                                           |              |

### 11.3.7 DIR

| Functions                                                                                                                                                                                                                                                                                                      |                      | Permission             | Transparency |
|----------------------------------------------------------------------------------------------------------------------------------------------------------------------------------------------------------------------------------------------------------------------------------------------------------------|----------------------|------------------------|--------------|
| Set:                                                                                                                                                                                                                                                                                                           | DIR                  | Administrator          | Public       |
| Get:                                                                                                                                                                                                                                                                                                           | -                    | -                      | -            |
| Description                                                                                                                                                                                                                                                                                                    |                      | Syntax                 |              |
| Set:                                                                                                                                                                                                                                                                                                           | List files in device | #DIR <code>[CR]</code> |              |
| Get:                                                                                                                                                                                                                                                                                                           | -                    | -                      |              |
| Response                                                                                                                                                                                                                                                                                                       |                      |                        |              |
| Multi-line:<br>~ <code>[nn]</code> @DIR <code>[CR LF]</code><br><i>file_name</i> <code>[TAB]</code> <i>file_size</i> <code>[SP]</code> bytes, <code>[SE]</code> ID: <code>[SP]</code> <i>file_id</i> <code>[CR LF]</code><br><code>[TAB]</code> <i>free_size</i> <code>[SP]</code> bytes. <code>[CR LF]</code> |                      |                        |              |
| Parameters                                                                                                                                                                                                                                                                                                     |                      |                        |              |
| <i>file_name</i> – name of file<br><i>file_size</i> – file size in bytes. A file can take more space on device memory<br><i>file_id</i> – internal ID for file in file system<br><i>free_size</i> – free space in bytes in device file system                                                                  |                      |                        |              |
| Response Triggers                                                                                                                                                                                                                                                                                              |                      |                        |              |
|                                                                                                                                                                                                                                                                                                                |                      |                        |              |
| K-Config Example                                                                                                                                                                                                                                                                                               |                      |                        |              |
| "DIR",0x0D                                                                                                                                                                                                                                                                                                     |                      |                        |              |

### 11.3.8 ETH-PORT

| Functions                                                    |                            | Permission                        | Transparency |
|--------------------------------------------------------------|----------------------------|-----------------------------------|--------------|
| Set:                                                         | ETH-PORT                   | Administrator                     | Public       |
| Get:                                                         | ETH-PORT?                  | End User                          | Public       |
| Description                                                  |                            | Syntax                            |              |
| Set:                                                         | Set Ethernet port protocol | #ETH-PORT[SP]portType,ETHPort[CR] |              |
| Get:                                                         | Get Ethernet port protocol | #ETH-PORT?[SP]portType[CR]        |              |
| Response                                                     |                            |                                   |              |
| ~nn@ETH-PORT[SP]portType,ETHPort[CR LF]                      |                            |                                   |              |
| Parameters                                                   |                            |                                   |              |
| portType – 1 (UDP), 2 (TCP)<br>ETHPort – TCP/UDP port number |                            |                                   |              |
| Response Triggers                                            |                            |                                   |              |
|                                                              |                            |                                   |              |
| K-Config Example                                             |                            |                                   |              |
| Set ETH port 1 to UDP:<br>"ETH-PORT 2,1",0x0D                |                            |                                   |              |

### 11.3.9 ETH-TUNNEL

| Functions                                                                                                                                                                                                                                                                                                                                                                                                                           |                                 | Permission                   | Transparency |
|-------------------------------------------------------------------------------------------------------------------------------------------------------------------------------------------------------------------------------------------------------------------------------------------------------------------------------------------------------------------------------------------------------------------------------------|---------------------------------|------------------------------|--------------|
| Set:                                                                                                                                                                                                                                                                                                                                                                                                                                | -                               | -                            | -            |
| Get:                                                                                                                                                                                                                                                                                                                                                                                                                                | ETH-TUNNEL?                     | Administrator                | Internal     |
| Description                                                                                                                                                                                                                                                                                                                                                                                                                         |                                 | Syntax                       |              |
| Set:                                                                                                                                                                                                                                                                                                                                                                                                                                |                                 |                              |              |
| Get:                                                                                                                                                                                                                                                                                                                                                                                                                                | Get parameters for open tunnels | #ETH-TUNNEL?[SP]TunnelId[CR] |              |
| Response                                                                                                                                                                                                                                                                                                                                                                                                                            |                                 |                              |              |
| ~nn@ETH-TUNNEL[SP]<br>TunnelId,ComNum,PortType,EthPort,EthIp,RemotPort,EthRepEn,Wired[CR LF]                                                                                                                                                                                                                                                                                                                                        |                                 |                              |              |
| Parameters                                                                                                                                                                                                                                                                                                                                                                                                                          |                                 |                              |              |
| TunnelId – tunnel ID number: 1-64 (depends on number of tunnel connections), * (all tunnel connections)<br>ComNum – UART number<br>portType – 1 (UDP), 2 (TCP)<br>EthPort – TCP/UDP port number<br>EthIp – client IP address<br>RemotPort – remote port number<br>EthRepEn – 1 (COM port sends replies to new clients), 0 (COM port does not send replies to new clients)<br>Wired – 1 (wired connection), 0 (not wired connection) |                                 |                              |              |
| Response Triggers                                                                                                                                                                                                                                                                                                                                                                                                                   |                                 |                              |              |
|                                                                                                                                                                                                                                                                                                                                                                                                                                     |                                 |                              |              |
| Notes                                                                                                                                                                                                                                                                                                                                                                                                                               |                                 |                              |              |
| The response displays each tunnel in a separate line.                                                                                                                                                                                                                                                                                                                                                                               |                                 |                              |              |
| K-Config Example                                                                                                                                                                                                                                                                                                                                                                                                                    |                                 |                              |              |
| "ETH-TUNNEL? 1",0x0D                                                                                                                                                                                                                                                                                                                                                                                                                |                                 |                              |              |

### 11.3.10 FACTORY

| Functions                                                                                                                                                                 |                                               | Permission | Transparency |
|---------------------------------------------------------------------------------------------------------------------------------------------------------------------------|-----------------------------------------------|------------|--------------|
| Set:                                                                                                                                                                      | FACTORY                                       | End User   | Public       |
| Get:                                                                                                                                                                      | -                                             | -          | -            |
| Description                                                                                                                                                               |                                               | Syntax     |              |
| Set:                                                                                                                                                                      | Reset device to factory default configuration | #FACTORYCR |              |
| Get:                                                                                                                                                                      | -                                             | -          |              |
| Response                                                                                                                                                                  |                                               |            |              |
| ~nn@FACTORYSP[OK]CR LF                                                                                                                                                    |                                               |            |              |
| Parameters                                                                                                                                                                |                                               |            |              |
|                                                                                                                                                                           |                                               |            |              |
| Response Triggers                                                                                                                                                         |                                               |            |              |
|                                                                                                                                                                           |                                               |            |              |
| Notes                                                                                                                                                                     |                                               |            |              |
| This command deletes all user data from the device. The deletion can take some time. Your device may require powering off and powering on for the changes to take effect. |                                               |            |              |
| K-Config Example                                                                                                                                                          |                                               |            |              |
| "#FACTORY", 0x0D                                                                                                                                                          |                                               |            |              |

### 11.3.11 FORMAT

| Functions                                                      |                    | Permission    | Transparency |
|----------------------------------------------------------------|--------------------|---------------|--------------|
| Set:                                                           | FORMAT             | Administrator | Public       |
| Get:                                                           | -                  | -             | -            |
| Description                                                    |                    | Syntax        |              |
| Set:                                                           | Format file system | #FORMATCR     |              |
| Get:                                                           | -                  | -             |              |
| Response                                                       |                    |               |              |
| ~nn@FORMATSP[OK]CR LF                                          |                    |               |              |
| Parameters                                                     |                    |               |              |
|                                                                |                    |               |              |
| Response Triggers                                              |                    |               |              |
|                                                                |                    |               |              |
| Notes                                                          |                    |               |              |
| Response could take several seconds until formatting completes |                    |               |              |
| K-Config Example                                               |                    |               |              |
| "#FORMAT", 0x0D                                                |                    |               |              |

### 11.3.12 FS-FREE

| Functions                                                   |                            | Permission          | Transparency |
|-------------------------------------------------------------|----------------------------|---------------------|--------------|
| Set:                                                        | -                          | -                   | -            |
| Get:                                                        | FS-FREE?                   | Administrator       | Public       |
| Description                                                 |                            | Syntax              |              |
| Set:                                                        | -                          | -                   |              |
| Get:                                                        | Get file system free space | #FS-FREE? <b>CR</b> |              |
| Response                                                    |                            |                     |              |
| ~ <b>nn</b> @FS_FREE <b>SP</b> free_size <b>CR LF</b>       |                            |                     |              |
| Parameters                                                  |                            |                     |              |
| <i>free_size</i> – free size in device file system in bytes |                            |                     |              |
| Response Triggers                                           |                            |                     |              |
|                                                             |                            |                     |              |
| K-Config Example                                            |                            |                     |              |
| "#FS-FREE?",0x0D                                            |                            |                     |              |

### 11.3.13 GET

| Functions                                                                                                                                                                                             |          | Permission                         | Transparency |
|-------------------------------------------------------------------------------------------------------------------------------------------------------------------------------------------------------|----------|------------------------------------|--------------|
| Set:                                                                                                                                                                                                  | -        | -                                  | -            |
| Get:                                                                                                                                                                                                  | GET      | Administrator                      | Public       |
| Description                                                                                                                                                                                           |          | Syntax                             |              |
| Set:                                                                                                                                                                                                  | -        | -                                  |              |
| Get:                                                                                                                                                                                                  | Get file | #GET <b>SP</b> file_name <b>CR</b> |              |
| Response                                                                                                                                                                                              |          |                                    |              |
| Multi-line:<br>~ <b>nn</b> @GET <b>SP</b> file_name,file_size <b>SP</b> READY <b>CR LF</b><br>contents<br>~ <b>nn</b> @GET <b>SP</b> file_name <b>SP</b> OK <b>CR LF</b>                              |          |                                    |              |
| Parameters                                                                                                                                                                                            |          |                                    |              |
| <i>file_name</i> – name of file to get contents<br><i>contents</i> – byte stream of file contents<br><i>file_size</i> – size of file (device sends it in response to give user a chance to get ready) |          |                                    |              |
| Response Triggers                                                                                                                                                                                     |          |                                    |              |
|                                                                                                                                                                                                       |          |                                    |              |
| K-Config Example                                                                                                                                                                                      |          |                                    |              |
| Get a file named "test":<br>"#GET test",0x0D                                                                                                                                                          |          |                                    |              |

### 11.3.14 GPIO-CFG

| Functions                                                                                                                                                                                                                                               |                           | Permission                                                                                      | Transparency |
|---------------------------------------------------------------------------------------------------------------------------------------------------------------------------------------------------------------------------------------------------------|---------------------------|-------------------------------------------------------------------------------------------------|--------------|
| Set:                                                                                                                                                                                                                                                    | GPIO-CFG                  | End User                                                                                        | Public       |
| Get:                                                                                                                                                                                                                                                    | GPIO-CFG?                 | End User                                                                                        | Public       |
| Description                                                                                                                                                                                                                                             |                           | Syntax                                                                                          |              |
| Set:                                                                                                                                                                                                                                                    | Set HW GPIO configuration | #GPIO-CFG <sup>[sp]</sup><br><i>HwGpioNumber, HwGpioType, HwGpioDir, Pullup</i> <sup>[cr]</sup> |              |
| Get:                                                                                                                                                                                                                                                    | Get HW GPIO configuration | #GPIO-CFG <sup>[sp]</sup> <i>HwGpioNumber</i> <sup>[cr]</sup>                                   |              |
| Response                                                                                                                                                                                                                                                |                           |                                                                                                 |              |
| ~ <sup>[nn]</sup> @GPIO-CFG <sup>[sp]</sup> <i>HwGpioNum, HwGpioType, HwGpioDir</i> <sup>[cr lf]</sup>                                                                                                                                                  |                           |                                                                                                 |              |
| Parameters                                                                                                                                                                                                                                              |                           |                                                                                                 |              |
| <i>HwGpioNum</i> – hardware GPIO number: 1-n<br><i>HwGpioType</i> – hardware GPIO type: 0 (analog), 1 (digital)<br><i>HwGpioDir</i> – hardware GPIO direction: 0 (input), 1 (output)<br><i>Pullup</i> – enable/disable pull-up: 0 (disable), 1 (enable) |                           |                                                                                                 |              |
| Response Triggers                                                                                                                                                                                                                                       |                           |                                                                                                 |              |
|                                                                                                                                                                                                                                                         |                           |                                                                                                 |              |
| Notes                                                                                                                                                                                                                                                   |                           |                                                                                                 |              |
|                                                                                                                                                                                                                                                         |                           |                                                                                                 |              |
| K-Config Example                                                                                                                                                                                                                                        |                           |                                                                                                 |              |
| Configure GPIO 2 to analog input with pullup disabled):<br>"#GPIO-CFG 2,0,0,0",0x0D                                                                                                                                                                     |                           |                                                                                                 |              |



### 11.3.15 GPIO-STATE

| Functions                                                                                                                                                                                                                                                                                                                          |                   | Permission                                                       | Transparency |
|------------------------------------------------------------------------------------------------------------------------------------------------------------------------------------------------------------------------------------------------------------------------------------------------------------------------------------|-------------------|------------------------------------------------------------------|--------------|
| Set:                                                                                                                                                                                                                                                                                                                               | GPIO-STATE        | End User                                                         | Public       |
| Get:                                                                                                                                                                                                                                                                                                                               | GPIO-STATE?       | End User                                                         | Public       |
| Description                                                                                                                                                                                                                                                                                                                        |                   | Syntax                                                           |              |
| Set:                                                                                                                                                                                                                                                                                                                               | Set HW GPIO state | #GPIO-STATE <sub>SP</sub> HwGpioNumber,HwGpioState <sub>CR</sub> |              |
| Get:                                                                                                                                                                                                                                                                                                                               | Get HW GPIO state | #GPIO-STATE <sub>SP</sub> HwGpioNumber <sub>CR</sub>             |              |
| Response                                                                                                                                                                                                                                                                                                                           |                   |                                                                  |              |
| ~nn@GPIO-STATE <sub>SP</sub> HwGpioNum,HwGpioState <sub>CR LF</sub>                                                                                                                                                                                                                                                                |                   |                                                                  |              |
| Parameters                                                                                                                                                                                                                                                                                                                         |                   |                                                                  |              |
| <i>HwGpioNum</i> – hardware GPIO number (1-n)                                                                                                                                                                                                                                                                                      |                   |                                                                  |              |
| <i>HwGpioState</i> – hardware GPIO state – see note below                                                                                                                                                                                                                                                                          |                   |                                                                  |              |
| Response Triggers                                                                                                                                                                                                                                                                                                                  |                   |                                                                  |              |
|                                                                                                                                                                                                                                                                                                                                    |                   |                                                                  |              |
| Notes                                                                                                                                                                                                                                                                                                                              |                   |                                                                  |              |
| GPIO-STATE? can only be sent in digital out mode and the answer is 0 (low), 1 (high). In all other modes an error message is sent.<br>The device uses this command to notify the user of any change regarding the step and voltage in:<br>In digital mode the answer is 0 (low), 1 (high)<br>In analog mode the answer is 0 to 100 |                   |                                                                  |              |
| K-Config Example                                                                                                                                                                                                                                                                                                                   |                   |                                                                  |              |
| Configure GPIO 2 to low state:<br>"#GPIO-STATE 2,0",0x0D                                                                                                                                                                                                                                                                           |                   |                                                                  |              |

### 11.3.16 GPIO-STEP

| Functions                                                                                                           |                  | Permission                                               | Transparency |
|---------------------------------------------------------------------------------------------------------------------|------------------|----------------------------------------------------------|--------------|
| Set:                                                                                                                | GPIO-STEP        | End User                                                 | Public       |
| Get:                                                                                                                | GPIO-STEP?       | End User                                                 | Public       |
| Description                                                                                                         |                  | Syntax                                                   |              |
| Set:                                                                                                                | Set HW GPIO step | #GPIO-STEP <sub>SP</sub> HwGpioNumber,Step <sub>CR</sub> |              |
| Get:                                                                                                                | Get HW GPIO step | #GPIO-STEP <sub>SP</sub> HwGpioNumber <sub>CR</sub>      |              |
| Response                                                                                                            |                  |                                                          |              |
| ~nn@GPIO-STEP <sub>SP</sub> HwGpioNumber,NumOfStep,CurrentStep <sub>CR LF</sub>                                     |                  |                                                          |              |
| Parameters                                                                                                          |                  |                                                          |              |
| <i>HwGpioNumber</i> – HW GPIO number: 1-n                                                                           |                  |                                                          |              |
| <i>NumOfStep</i> – the configuration step – see note below                                                          |                  |                                                          |              |
| <i>CurrentStep</i> – the actual step depending on the measured voltage                                              |                  |                                                          |              |
| Response Triggers                                                                                                   |                  |                                                          |              |
|                                                                                                                     |                  |                                                          |              |
| Notes                                                                                                               |                  |                                                          |              |
| In digital mode the response is 2<br>In analog mode the response is 1 to 100<br>In other modes an error is returned |                  |                                                          |              |
| K-Config Example                                                                                                    |                  |                                                          |              |
| Set GPIO 2 step 1 to 50:<br>"#GPIO-STEP 2,1,50",0x0D                                                                |                  |                                                          |              |

### 11.3.17 GPIO-THR

| Functions                                                                                                                              |                            | Permission                                                               | Transparency |
|----------------------------------------------------------------------------------------------------------------------------------------|----------------------------|--------------------------------------------------------------------------|--------------|
| Set:                                                                                                                                   | GPIO-THR                   | End User                                                                 | Public       |
| Get:                                                                                                                                   | GPIO-THR?                  | End User                                                                 | Public       |
| Description                                                                                                                            |                            | Syntax                                                                   |              |
| Set:                                                                                                                                   | Set HW GPIO voltage levels | #GPIO-THR <sub>SP</sub> HwGpioNumber,LowLevel,HighLevel <sub>CR LF</sub> |              |
| Get:                                                                                                                                   | Get HW GPIO voltage levels | #GPIO-THR? <sub>SP</sub> HwGpioNumber <sub>CR</sub>                      |              |
| Response                                                                                                                               |                            |                                                                          |              |
| ~ <sub>nn</sub> @GPIO-THR <sub>SP</sub> HwGpioNumber,LowLevel,HighLevel <sub>CR LF</sub>                                               |                            |                                                                          |              |
| Parameters                                                                                                                             |                            |                                                                          |              |
| HwGpioNumber – hardware GPIO number: 1-n<br>LowLevel – voltage 500 to 28000 millivolts<br>HighLevel – voltage 2000 to 30000 millivolts |                            |                                                                          |              |
| Response Triggers                                                                                                                      |                            |                                                                          |              |
|                                                                                                                                        |                            |                                                                          |              |
| Notes                                                                                                                                  |                            |                                                                          |              |
|                                                                                                                                        |                            |                                                                          |              |
| K-Config Example                                                                                                                       |                            |                                                                          |              |
| Set GPIO 1 voltage levels between 600mV to 15000mV:<br>"#GPIO-THR 1,600,15000",0x0D                                                    |                            |                                                                          |              |

### 11.3.18 GPIO-VOLT

| Functions                                                                           |                               | Permission                                           | Transparency |
|-------------------------------------------------------------------------------------|-------------------------------|------------------------------------------------------|--------------|
| Set:                                                                                | -                             | -                                                    | -            |
| Get:                                                                                | GPIO-VOLT?                    | End User                                             | Public       |
| Description                                                                         |                               | Syntax                                               |              |
| Set:                                                                                |                               |                                                      |              |
| Get:                                                                                | Get voltage levels of HW GPIO | #GPIO-VOLT? <sub>SP</sub> HwGpioNumber <sub>CR</sub> |              |
| Response                                                                            |                               |                                                      |              |
| ~ <sub>nn</sub> @GPIO-VOLT <sub>SP</sub> HwGpioNumber,Voltage <sub>CR LF</sub>      |                               |                                                      |              |
| Parameters                                                                          |                               |                                                      |              |
| HwGpioNumber – hardware GPIO number: 1-n<br>Voltage – voltage 0 to 30000 millivolts |                               |                                                      |              |
| Response Triggers                                                                   |                               |                                                      |              |
|                                                                                     |                               |                                                      |              |
| Notes                                                                               |                               |                                                      |              |
| This command is not available in digital out mode                                   |                               |                                                      |              |
| K-Config Example                                                                    |                               |                                                      |              |
| "#GPIO-VOLT? 1",0x0D                                                                |                               |                                                      |              |

### 11.3.19 HELP

| Functions                                                                                                                                                                                                                                                                                                                       |                                               | Permission                                                                                                                                                                                     | Transparency |
|---------------------------------------------------------------------------------------------------------------------------------------------------------------------------------------------------------------------------------------------------------------------------------------------------------------------------------|-----------------------------------------------|------------------------------------------------------------------------------------------------------------------------------------------------------------------------------------------------|--------------|
| Set:                                                                                                                                                                                                                                                                                                                            | -                                             | -                                                                                                                                                                                              | -            |
| Get:                                                                                                                                                                                                                                                                                                                            | HELP                                          | End User                                                                                                                                                                                       | Public       |
| Description                                                                                                                                                                                                                                                                                                                     |                                               | Syntax                                                                                                                                                                                         |              |
| Set:                                                                                                                                                                                                                                                                                                                            | -                                             | -                                                                                                                                                                                              |              |
| Get:                                                                                                                                                                                                                                                                                                                            | Get command list or help for specific command | 1. #HELP <input type="checkbox"/> <input type="checkbox"/><br>2. #HELP <input type="checkbox"/> <input type="checkbox"/> <i>COMMAND_NAME</i> <input type="checkbox"/> <input type="checkbox"/> |              |
| Response                                                                                                                                                                                                                                                                                                                        |                                               |                                                                                                                                                                                                |              |
| 1. Multi-line: ~ <input type="checkbox"/> @Device available protocol 3000 commands: <input type="checkbox"/> <input type="checkbox"/> <i>command</i> , <input type="checkbox"/> <input type="checkbox"/> <i>command</i> ... <input type="checkbox"/> <input type="checkbox"/> <input type="checkbox"/> <input type="checkbox"/> |                                               |                                                                                                                                                                                                |              |
| 2. Multi-line: ~ <input type="checkbox"/> @HELP <input type="checkbox"/> <input type="checkbox"/> <i>command</i> : <input type="checkbox"/> <input type="checkbox"/> <i>description</i> <input type="checkbox"/> <input type="checkbox"/> <i>USAGE: usage</i> <input type="checkbox"/> <input type="checkbox"/>                 |                                               |                                                                                                                                                                                                |              |
| Parameters                                                                                                                                                                                                                                                                                                                      |                                               |                                                                                                                                                                                                |              |
| <i>COMMAND_NAME</i> – name of a specific command                                                                                                                                                                                                                                                                                |                                               |                                                                                                                                                                                                |              |
| Response Triggers                                                                                                                                                                                                                                                                                                               |                                               |                                                                                                                                                                                                |              |
|                                                                                                                                                                                                                                                                                                                                 |                                               |                                                                                                                                                                                                |              |
| Notes                                                                                                                                                                                                                                                                                                                           |                                               |                                                                                                                                                                                                |              |
| To get help for a specific command use: HELP <input type="checkbox"/> <input type="checkbox"/> <i>COMMAND_NAME</i> <input type="checkbox"/> <input type="checkbox"/>                                                                                                                                                            |                                               |                                                                                                                                                                                                |              |
| K-Config Example                                                                                                                                                                                                                                                                                                                |                                               |                                                                                                                                                                                                |              |
| `#HELP`, 0x0D                                                                                                                                                                                                                                                                                                                   |                                               |                                                                                                                                                                                                |              |

### 11.3.20 IR-LEARN

| Functions                                                                                                                                                              |                          | Permission                                                                                                                                | Transparency |
|------------------------------------------------------------------------------------------------------------------------------------------------------------------------|--------------------------|-------------------------------------------------------------------------------------------------------------------------------------------|--------------|
| Set:                                                                                                                                                                   | IR-LEARN                 | End User                                                                                                                                  | Public       |
| Get:                                                                                                                                                                   | -                        | -                                                                                                                                         | -            |
| Description                                                                                                                                                            |                          | Syntax                                                                                                                                    |              |
| Set:                                                                                                                                                                   | Send IR learning command | #IR-LEARN <input type="checkbox"/> <input type="checkbox"/> <i>CommandName, Timeout</i> <input type="checkbox"/> <input type="checkbox"/> |              |
| Get:                                                                                                                                                                   | -                        | -                                                                                                                                         |              |
| Response                                                                                                                                                               |                          |                                                                                                                                           |              |
| ~ <input type="checkbox"/> @IR-LEARN <input type="checkbox"/> <input type="checkbox"/> <i>CommandName, IR_Status</i> <input type="checkbox"/> <input type="checkbox"/> |                          |                                                                                                                                           |              |
| Parameters                                                                                                                                                             |                          |                                                                                                                                           |              |
| <i>CommandName</i> – String: IR command name limited to 15 chars. Controlling device must send the correct name (whitespace or commas forbidden)                       |                          |                                                                                                                                           |              |
| <i>Timeout</i> – 1 to 60 (timeout in seconds)                                                                                                                          |                          |                                                                                                                                           |              |
| <i>IR_Status</i> – 0 (sent), 1 (stop), 2 (done), 3 (busy), 4 (wrong parameter), 5 (nothing to stop), 6 (start), 7 (timeout), 8 (error)                                 |                          |                                                                                                                                           |              |
| Response Triggers                                                                                                                                                      |                          |                                                                                                                                           |              |
|                                                                                                                                                                        |                          |                                                                                                                                           |              |
| K-Config Example                                                                                                                                                       |                          |                                                                                                                                           |              |
| Send the IR learning command volume up with a 3 second timeout:<br>`#IR-LEARN vol_up, 3`, 0x0D                                                                         |                          |                                                                                                                                           |              |

### 11.3.21 IR-SND

| Functions                                                                                                                                                                                                                                                                                                                                                                                                                                                                                                                                                                                                                                                                                                                                                                                               |                         | Permission                                                                                                               | Transparency |
|---------------------------------------------------------------------------------------------------------------------------------------------------------------------------------------------------------------------------------------------------------------------------------------------------------------------------------------------------------------------------------------------------------------------------------------------------------------------------------------------------------------------------------------------------------------------------------------------------------------------------------------------------------------------------------------------------------------------------------------------------------------------------------------------------------|-------------------------|--------------------------------------------------------------------------------------------------------------------------|--------------|
| Set:                                                                                                                                                                                                                                                                                                                                                                                                                                                                                                                                                                                                                                                                                                                                                                                                    | IR-SND                  | End User                                                                                                                 | Public       |
| Get:                                                                                                                                                                                                                                                                                                                                                                                                                                                                                                                                                                                                                                                                                                                                                                                                    | -                       | -                                                                                                                        | -            |
| Description                                                                                                                                                                                                                                                                                                                                                                                                                                                                                                                                                                                                                                                                                                                                                                                             |                         | Syntax                                                                                                                   |              |
| Set:                                                                                                                                                                                                                                                                                                                                                                                                                                                                                                                                                                                                                                                                                                                                                                                                    | Send IR command to port | #IR-SND <b>SF</b> <i>PortNum, Cmdid, CmdName, Repeat, TotalPackages, PackageNum, &lt;pronto command...&gt;</i> <b>CR</b> |              |
| Get:                                                                                                                                                                                                                                                                                                                                                                                                                                                                                                                                                                                                                                                                                                                                                                                                    | -                       | -                                                                                                                        |              |
| Response                                                                                                                                                                                                                                                                                                                                                                                                                                                                                                                                                                                                                                                                                                                                                                                                |                         |                                                                                                                          |              |
| ~ <b>rr</b> @IR-SND <b>SF</b> <i>PortNum, Cmdid, CmdName, Status</i> <b>CR LF</b>                                                                                                                                                                                                                                                                                                                                                                                                                                                                                                                                                                                                                                                                                                                       |                         |                                                                                                                          |              |
| Parameters                                                                                                                                                                                                                                                                                                                                                                                                                                                                                                                                                                                                                                                                                                                                                                                              |                         |                                                                                                                          |              |
| <p><i>PortNum</i> – IR port (1 to 4) transmitting the command. '*' broadcasts to all ports<br/> <i>Cmdid</i> – serial number of command for flow control and response commands from device<br/> <i>CmdName</i> – String: IR command name limited to 15 chars.<br/> <i>Repeat</i> – number of times the IR command is transmitted (limited to 50; repeats &gt; 50 are truncated to 50), 1 (default)<br/> <i>TotalPackages</i> – number of messages the original command was divided into, 1 (default)<br/> <i>PackageNum</i> – chunk serial number (only valid when Chnk_Num &gt;1)<br/> <i>Pronto command</i> – Pronto format command (in HEX format, without leading zeros or '0x' prefix)<br/> <i>Status</i> – 0 (IR_SENT), 1 (IR_STOP), 2 (IR_BUSY), 3 (IR_WRONG_PARAM), 4 (IR- NOTHING_TO_STOP)</p> |                         |                                                                                                                          |              |
| Response Triggers                                                                                                                                                                                                                                                                                                                                                                                                                                                                                                                                                                                                                                                                                                                                                                                       |                         |                                                                                                                          |              |
|                                                                                                                                                                                                                                                                                                                                                                                                                                                                                                                                                                                                                                                                                                                                                                                                         |                         |                                                                                                                          |              |
| K-Config Example                                                                                                                                                                                                                                                                                                                                                                                                                                                                                                                                                                                                                                                                                                                                                                                        |                         |                                                                                                                          |              |
| <p>Send a volume up command to port 3 and repeat five times:<br/> "#IR-SND 3,04,vol_up,5,1,1,4E 23 C4...",0x0D</p>                                                                                                                                                                                                                                                                                                                                                                                                                                                                                                                                                                                                                                                                                      |                         |                                                                                                                          |              |

### 11.3.22 IR-STOP

| Functions                                                                                                                                                                                                                                                                                                                                                                                                                             |                              | Permission                                           | Transparency |
|---------------------------------------------------------------------------------------------------------------------------------------------------------------------------------------------------------------------------------------------------------------------------------------------------------------------------------------------------------------------------------------------------------------------------------------|------------------------------|------------------------------------------------------|--------------|
| Set:                                                                                                                                                                                                                                                                                                                                                                                                                                  | IR-STOP                      | End User                                             | Public       |
| Get:                                                                                                                                                                                                                                                                                                                                                                                                                                  | -                            | -                                                    | -            |
| Description                                                                                                                                                                                                                                                                                                                                                                                                                           |                              | Syntax                                               |              |
| Set:                                                                                                                                                                                                                                                                                                                                                                                                                                  | Send IR stop command to port | #IR-STOP <b>SF</b> PortNum, Cmdid, CmdName <b>CR</b> |              |
| Get:                                                                                                                                                                                                                                                                                                                                                                                                                                  | -                            | -                                                    |              |
| Response                                                                                                                                                                                                                                                                                                                                                                                                                              |                              |                                                      |              |
| ~nn@IR-STOP <b>SF</b> PortNum, Cmdid, CmdName, Status <b>CR LF</b>                                                                                                                                                                                                                                                                                                                                                                    |                              |                                                      |              |
| Parameters                                                                                                                                                                                                                                                                                                                                                                                                                            |                              |                                                      |              |
| <p><i>PortNum</i> – IR port (1 to 4) transmitting the command. '*' broadcasts to all ports<br/> <i>Cmdid</i> – serial number of command for flow control and response commands from device<br/> <i>CmdName</i> – a string, the alias of the IR command. The controlling device is responsible for sending the correct name<br/> <i>Status</i> – 0 (IR_SENT), 1 (IR_STOP), 2 (IR_BUSY), 3 (IR_WRONG_PARAM), 4 (IR_NOTHING_TO_STOP)</p> |                              |                                                      |              |
| Response Triggers                                                                                                                                                                                                                                                                                                                                                                                                                     |                              |                                                      |              |
|                                                                                                                                                                                                                                                                                                                                                                                                                                       |                              |                                                      |              |
| K-Config Example                                                                                                                                                                                                                                                                                                                                                                                                                      |                              |                                                      |              |
| <p>Send a power off command to IR port 2:<br/> "#IR-STOP 2,06,power_off",0x0D</p>                                                                                                                                                                                                                                                                                                                                                     |                              |                                                      |              |

### 11.3.23 LOGIN

| Functions                                                                                                                                                      |                                       | Permission                                  | Transparency |
|----------------------------------------------------------------------------------------------------------------------------------------------------------------|---------------------------------------|---------------------------------------------|--------------|
| Set:                                                                                                                                                           | LOGIN                                 | Not Secure                                  | Public       |
| Get:                                                                                                                                                           | LOGIN?                                | Not Secure                                  | Public       |
| Description                                                                                                                                                    |                                       | Syntax                                      |              |
| Set:                                                                                                                                                           | Set protocol permission               | #LOGIN[SP] <i>login_level,password</i> [CR] |              |
| Get:                                                                                                                                                           | Get current protocol permission level | #LOGIN?[CR]                                 |              |
| Response                                                                                                                                                       |                                       |                                             |              |
| Set: ~nn@LOGIN[SP] <i>login_level,password</i> [SP]OK[CR LF]                                                                                                   |                                       |                                             |              |
| or                                                                                                                                                             |                                       |                                             |              |
| ~nn@LOGIN[SP]ERR[SP]004[CR LF] (if bad password entered)                                                                                                       |                                       |                                             |              |
| Get: ~nn@LOGIN[SP] <i>login_level</i> [CR LF]                                                                                                                  |                                       |                                             |              |
| Parameters                                                                                                                                                     |                                       |                                             |              |
| <i>login_level</i> – level of permissions required: User, Admin                                                                                                |                                       |                                             |              |
| <i>password</i> – predefined password (by PASS command). Default password is an empty string                                                                   |                                       |                                             |              |
| Response Triggers                                                                                                                                              |                                       |                                             |              |
|                                                                                                                                                                |                                       |                                             |              |
| Notes                                                                                                                                                          |                                       |                                             |              |
| When the permission system is enabled, LOGIN enables running commands with the User or Administrator permission level                                          |                                       |                                             |              |
| When set, login must be performed upon each connection                                                                                                         |                                       |                                             |              |
| The permission system works only if security is enabled with the SECUR command. It is not mandatory to enable the permission system in order to use the device |                                       |                                             |              |
| K-Config Example                                                                                                                                               |                                       |                                             |              |
| Set the protocol permission level to Admin (when the password defined in the PASS command is 33333):<br>"#LOGIN Admin,33333",0x0D                              |                                       |                                             |              |

### 11.3.24 LOGOUT

| Functions                                             |                                 | Permission  | Transparency |
|-------------------------------------------------------|---------------------------------|-------------|--------------|
| Set:                                                  | LOGOUT                          | Not Secure  | Public       |
| Get:                                                  | -                               | -           | -            |
| Description                                           |                                 | Syntax      |              |
| Set:                                                  | Cancel current permission level | #LOGOUT[CR] |              |
| Get:                                                  | -                               | -           |              |
| Response                                              |                                 |             |              |
| ~nn@LOGOUT[SP]OK[CR LF]                               |                                 |             |              |
| Parameters                                            |                                 |             |              |
|                                                       |                                 |             |              |
| Response Triggers                                     |                                 |             |              |
|                                                       |                                 |             |              |
| Notes                                                 |                                 |             |              |
| Logs out from User or Administrator permission levels |                                 |             |              |
| K-Config Example                                      |                                 |             |              |
| "#LOGOUT",0x0D                                        |                                 |             |              |

### 11.3.25 MACH-NUM

| Functions                                                       |                                | Permission                  | Transparency |
|-----------------------------------------------------------------|--------------------------------|-----------------------------|--------------|
| Set:                                                            | MACH-NUM                       | End User                    | Public       |
| Get:                                                            |                                | -                           | -            |
| Description                                                     |                                | Syntax                      |              |
| Set:                                                            | Set machine number (device ID) | #MACH-NUMSEmachine_numberCR |              |
| Get:                                                            | -                              | -                           |              |
| Response                                                        |                                |                             |              |
| ~nn@MACH-NUMSEmachine_numberCR LF                               |                                |                             |              |
| Parameters                                                      |                                |                             |              |
| machine_number – New machine number                             |                                |                             |              |
| Response Triggers                                               |                                |                             |              |
|                                                                 |                                |                             |              |
| Notes                                                           |                                |                             |              |
| The new machine number is only set after restarting the device. |                                |                             |              |
| K-Config Example                                                |                                |                             |              |
| "#MACH-NUM 4", 0x0D                                             |                                |                             |              |

### 11.3.26 MODEL

| Functions                                                                                                                                                                                               |                  | Permission | Transparency |
|---------------------------------------------------------------------------------------------------------------------------------------------------------------------------------------------------------|------------------|------------|--------------|
| Set:                                                                                                                                                                                                    | -                | -          | -            |
| Get:                                                                                                                                                                                                    | MODEL?           | End User   | Public       |
| Description                                                                                                                                                                                             |                  | Syntax     |              |
| Set:                                                                                                                                                                                                    | -                | -          |              |
| Get:                                                                                                                                                                                                    | Get device model | #MODEL?CR  |              |
| Response                                                                                                                                                                                                |                  |            |              |
| ~nn@MODELSEmodel_nameCR LF                                                                                                                                                                              |                  |            |              |
| Parameters                                                                                                                                                                                              |                  |            |              |
| model_name – String of up to 19 printable ASCII chars                                                                                                                                                   |                  |            |              |
| Response Triggers                                                                                                                                                                                       |                  |            |              |
|                                                                                                                                                                                                         |                  |            |              |
| Notes                                                                                                                                                                                                   |                  |            |              |
| This command identifies equipment connected to Step-in master products and notifies of identity changes to the connected equipment. The Matrix saves this data in memory to answer REMOTE-INFO requests |                  |            |              |
| K-Config Example                                                                                                                                                                                        |                  |            |              |
| "#MODEL?", 0x0D                                                                                                                                                                                         |                  |            |              |

### 11.3.27 NAME

| Functions                                                                                                                                             |                                  | Permission                | Transparency |
|-------------------------------------------------------------------------------------------------------------------------------------------------------|----------------------------------|---------------------------|--------------|
| Set:                                                                                                                                                  | NAME                             | Administrator             | Public       |
| Get:                                                                                                                                                  | NAME?                            | End User                  | Public       |
| Description                                                                                                                                           |                                  | Syntax                    |              |
| Set:                                                                                                                                                  | Set machine (DNS) name           | #NAME[SP]machine_name[CR] |              |
| Get:                                                                                                                                                  | Get machine (DNS) name           | #NAME?[CR]                |              |
| Response                                                                                                                                              |                                  |                           |              |
| Set:                                                                                                                                                  | ~nn@NAME[SP]machine_name[CR LF]  |                           |              |
| Get:                                                                                                                                                  | ~nn@NAME?[SP]machine_name[CR LF] |                           |              |
| Parameters                                                                                                                                            |                                  |                           |              |
| <i>machine_name</i> - string of up to 15 alpha-numeric chars (can include hyphen, not at the beginning or end)                                        |                                  |                           |              |
| Response Triggers                                                                                                                                     |                                  |                           |              |
|                                                                                                                                                       |                                  |                           |              |
| Notes                                                                                                                                                 |                                  |                           |              |
| The machine name is not the same as the model name. The machine name is used to identify a specific machine or a network in use (with DNS feature on) |                                  |                           |              |
| K-Config Example                                                                                                                                      |                                  |                           |              |
| Set machine name to NT-52P-4321:<br>`#NAME NT-52P-4321",0x0D`                                                                                         |                                  |                           |              |



### 11.3.28 NAME-RST

| Functions                                                                                  |                                             | Permission                | Transparency |
|--------------------------------------------------------------------------------------------|---------------------------------------------|---------------------------|--------------|
| Set:                                                                                       | NAME-RST                                    | Administrator             | Public       |
| Get:                                                                                       | -                                           | -                         | -            |
| Description                                                                                |                                             | Syntax                    |              |
| Set:                                                                                       | Reset machine (DNS) name to factory default | #NAME-RST <code>CR</code> |              |
| Get:                                                                                       | -                                           | -                         |              |
| Response                                                                                   |                                             |                           |              |
| ~nn@NAME-RST <code>SE</code> OK <code>CR LF</code>                                         |                                             |                           |              |
| Parameters                                                                                 |                                             |                           |              |
|                                                                                            |                                             |                           |              |
| Response Triggers                                                                          |                                             |                           |              |
|                                                                                            |                                             |                           |              |
| Notes                                                                                      |                                             |                           |              |
| Factory default of machine (DNS) name is "KRAMER_" + 4 last digits of device serial number |                                             |                           |              |
| K-Config Example                                                                           |                                             |                           |              |
| "#NAME-RST", 0x0D                                                                          |                                             |                           |              |

### 11.3.29 NET-DHCP

| Functions                                                                                                                                                                                                                                                                                                                                                      |               | Permission                                     | Transparency |
|----------------------------------------------------------------------------------------------------------------------------------------------------------------------------------------------------------------------------------------------------------------------------------------------------------------------------------------------------------------|---------------|------------------------------------------------|--------------|
| Set:                                                                                                                                                                                                                                                                                                                                                           | NET-DHCP      | Administrator                                  | Public       |
| Get:                                                                                                                                                                                                                                                                                                                                                           | NET-DHCP?     | End User                                       | Public       |
| Description                                                                                                                                                                                                                                                                                                                                                    |               | Syntax                                         |              |
| Set:                                                                                                                                                                                                                                                                                                                                                           | Set DHCP mode | #NET-DHCP <code>SE</code> mode <code>CR</code> |              |
| Get:                                                                                                                                                                                                                                                                                                                                                           | Get DHCP mode | #NET-DHCP? <code>CR</code>                     |              |
| Response                                                                                                                                                                                                                                                                                                                                                       |               |                                                |              |
| ~nn@NET-DHCP <code>SE</code> mode <code>CR LF</code>                                                                                                                                                                                                                                                                                                           |               |                                                |              |
| Parameters                                                                                                                                                                                                                                                                                                                                                     |               |                                                |              |
| mode – 0 (do not use DHCP. Use the IP address set by the factory or the NET-IP command), 1 (try to use DHCP. If unavailable, use the IP address set by the factory or the NET-IP command)                                                                                                                                                                      |               |                                                |              |
| Response Triggers                                                                                                                                                                                                                                                                                                                                              |               |                                                |              |
|                                                                                                                                                                                                                                                                                                                                                                |               |                                                |              |
| Notes                                                                                                                                                                                                                                                                                                                                                          |               |                                                |              |
| Connecting Ethernet to devices with DHCP may take more time in some networks<br>To connect with a randomly assigned IP by DHCP, specify the device DNS name (if available) using the NAME command. You can also get an assigned IP by direct connection to USB or RS-232 protocol port if available<br>Consult your network administrator for correct settings |               |                                                |              |
| K-Config Example                                                                                                                                                                                                                                                                                                                                               |               |                                                |              |
| Enable DHCP mode, if available:<br>"#NET-DHCP 1", 0x0D                                                                                                                                                                                                                                                                                                         |               |                                                |              |

### 11.3.30 NET-GATE

| Functions                                                                                                                                                                        |                | Permission                                                              | Transparency |
|----------------------------------------------------------------------------------------------------------------------------------------------------------------------------------|----------------|-------------------------------------------------------------------------|--------------|
| Set:                                                                                                                                                                             | NET-GATE       | Administrator                                                           | Public       |
| Get:                                                                                                                                                                             | NET-GATE?      | End User                                                                | Public       |
| Description                                                                                                                                                                      |                | Syntax                                                                  |              |
| Set:                                                                                                                                                                             | Set gateway IP | #NET-GATE <code>[SF]</code> <code>[ip_address]</code> <code>[CR]</code> |              |
| Get:                                                                                                                                                                             | Get gateway IP | #NET-GATE? <code>[CR]</code>                                            |              |
| Response                                                                                                                                                                         |                |                                                                         |              |
| ~ <code>[nn]</code> @NET-GATE <code>[SF]</code> <code>[ip_address]</code> <code>[CR LF]</code>                                                                                   |                |                                                                         |              |
| Parameters                                                                                                                                                                       |                |                                                                         |              |
| <i>ip_address</i> – gateway IP address, in the following format: xxx.xxx.xxx.xxx                                                                                                 |                |                                                                         |              |
| Response Triggers                                                                                                                                                                |                |                                                                         |              |
|                                                                                                                                                                                  |                |                                                                         |              |
| Notes                                                                                                                                                                            |                |                                                                         |              |
| A network gateway connects the device via another network, possibly over the Internet. Be careful of security problems. Consult your network administrator for correct settings. |                |                                                                         |              |
| K-Config Example                                                                                                                                                                 |                |                                                                         |              |
| Set the gateway IP address to 192.168.0.1:<br>"#NET-GATE 192.168.000.001",0x0D                                                                                                   |                |                                                                         |              |

### 11.3.31 NET-IP

| Functions                                                                                    |                | Permission                                                            | Transparency |
|----------------------------------------------------------------------------------------------|----------------|-----------------------------------------------------------------------|--------------|
| Set:                                                                                         | NET-IP         | Administrator                                                         | Public       |
| Get:                                                                                         | NET-IP?        | End User                                                              | Public       |
| Description                                                                                  |                | Syntax                                                                |              |
| Set:                                                                                         | Set IP address | #NET-IP <code>[SF]</code> <code>[ip_address]</code> <code>[CR]</code> |              |
| Get:                                                                                         | Get IP address | #NET-IP? <code>[CR]</code>                                            |              |
| Response                                                                                     |                |                                                                       |              |
| ~ <code>[nn]</code> @NET-IP <code>[SF]</code> <code>[ip_address]</code> <code>[CR LF]</code> |                |                                                                       |              |
| Parameters                                                                                   |                |                                                                       |              |
| <i>ip_address</i> – IP address, in the following format: xxx.xxx.xxx.xxx                     |                |                                                                       |              |
| Response Triggers                                                                            |                |                                                                       |              |
|                                                                                              |                |                                                                       |              |
| Notes                                                                                        |                |                                                                       |              |
| Consult your network administrator for correct settings                                      |                |                                                                       |              |
| K-Config Example                                                                             |                |                                                                       |              |
| Set the IP address to 192.168.1.39:<br>"#NET-IP 192.168.001.039",0x0D                        |                |                                                                       |              |

### 11.3.32 NET-MAC

| Functions                                                                                               |                 | Permission                         | Transparency |
|---------------------------------------------------------------------------------------------------------|-----------------|------------------------------------|--------------|
| Set:                                                                                                    | -               | -                                  | -            |
| Get:                                                                                                    | NET-MAC?        | End User                           | Public       |
| Description                                                                                             |                 | Syntax                             |              |
| Set:                                                                                                    | -               | -                                  |              |
| Get:                                                                                                    | Get MAC address | #NET-MAC? <input type="checkbox"/> |              |
| Response                                                                                                |                 |                                    |              |
| ~ <input type="checkbox"/> @NET-MAC <input type="checkbox"/> mac_address <input type="checkbox"/> CR LF |                 |                                    |              |
| Parameters                                                                                              |                 |                                    |              |
| mac_address – unique MAC address. Format: XX-XX-XX-XX-XX-XX where X is hex digit                        |                 |                                    |              |
| Response Triggers                                                                                       |                 |                                    |              |
|                                                                                                         |                 |                                    |              |
| Notes                                                                                                   |                 |                                    |              |
|                                                                                                         |                 |                                    |              |
| K-Config Example                                                                                        |                 |                                    |              |
| "#NET-MAC?", 0x0D                                                                                       |                 |                                    |              |

### 11.3.33 NET-MASK

| Functions                                                                                                                          |                 | Permission                                                           | Transparency |
|------------------------------------------------------------------------------------------------------------------------------------|-----------------|----------------------------------------------------------------------|--------------|
| Set:                                                                                                                               | NET-MASK        | Administrator                                                        | Public       |
| Get:                                                                                                                               | NET-MASK?       | End User                                                             | Public       |
| Description                                                                                                                        |                 | Syntax                                                               |              |
| Set:                                                                                                                               | Set subnet mask | #NET-MASK <input type="checkbox"/> net_mask <input type="checkbox"/> |              |
| Get:                                                                                                                               | Get subnet mask | #NET-MASK? <input type="checkbox"/>                                  |              |
| Response                                                                                                                           |                 |                                                                      |              |
| ~ <input type="checkbox"/> @NET-MASK <input type="checkbox"/> net_mask <input type="checkbox"/> CR LF                              |                 |                                                                      |              |
| Parameters                                                                                                                         |                 |                                                                      |              |
| net_mask – format: xxx.xxx.xxx.xxx                                                                                                 |                 |                                                                      |              |
| Response Triggers                                                                                                                  |                 |                                                                      |              |
| The subnet mask limits the Ethernet connection within the local network<br>Consult your network administrator for correct settings |                 |                                                                      |              |
| Notes                                                                                                                              |                 |                                                                      |              |
|                                                                                                                                    |                 |                                                                      |              |
| K-Config Example                                                                                                                   |                 |                                                                      |              |
| Set the subnet mask to 255.255.0.0:<br>"#NET-MASK 255.255.000.000", 0x0D                                                           |                 |                                                                      |              |

### 11.3.34 PASS

| Functions                                                                                                                    |                              | Permission                        | Transparency |
|------------------------------------------------------------------------------------------------------------------------------|------------------------------|-----------------------------------|--------------|
| Set:                                                                                                                         | PASS                         | Administrator                     | Public       |
| Get:                                                                                                                         | PASS?                        | Administrator                     | Public       |
| Description                                                                                                                  |                              | Syntax                            |              |
| Set:                                                                                                                         | Set password for login level | #PASS[SP]login_level,password[CR] |              |
| Get:                                                                                                                         | Get password for login level | #PASS?[SP]login_level[CR]         |              |
| Response                                                                                                                     |                              |                                   |              |
| ~nn@PASS[SP]login_level,password[CR LF]                                                                                      |                              |                                   |              |
| Parameters                                                                                                                   |                              |                                   |              |
| login_level – level of login to set: User, Admin<br>password – password for the login_level. Up to 15 printable ASCII chars. |                              |                                   |              |
| Response Triggers                                                                                                            |                              |                                   |              |
|                                                                                                                              |                              |                                   |              |
| Notes                                                                                                                        |                              |                                   |              |
| The default password is an empty string                                                                                      |                              |                                   |              |
| K-Config Example                                                                                                             |                              |                                   |              |
| Set the password for the Admin protocol permission level to 33333:<br>"#PASS Admin, 33333",0x0D                              |                              |                                   |              |

### 11.3.35 PORT-LOCK

| Functions                                                         |                         | Permission                             | Transparency |
|-------------------------------------------------------------------|-------------------------|----------------------------------------|--------------|
| Set:                                                              | PORT-LOCK               | End User                               | Public       |
| Get:                                                              | PORT-LOCK?              | End User                               | Public       |
| Description                                                       |                         | Syntax                                 |              |
| Set:                                                              | Set the port lock       | #PORT-LOCK[SP]PortNumber,LockState[CR] |              |
| Get:                                                              | Get the port lock state | #PORT-LOCK?[SP]PortNumber[CR]          |              |
| Response                                                          |                         |                                        |              |
| ~nn@PORT-LOCK[SP]PortNumber,LockState[CR LF]                      |                         |                                        |              |
| Parameters                                                        |                         |                                        |              |
| PortNumber – port number: 1-n<br>LockState – 1 (lock), 0 (unlock) |                         |                                        |              |
| Response Triggers                                                 |                         |                                        |              |
|                                                                   |                         |                                        |              |
| Notes                                                             |                         |                                        |              |
|                                                                   |                         |                                        |              |
| K-Config Example                                                  |                         |                                        |              |
| Lock port 3.<br>"#PORT-LOCK 3, 1",0x0D                            |                         |                                        |              |

### 11.3.36 PORT-TYPE

| Functions                                                                                                                                                                                                                                            |                      | Permission                                                                          | Transparency |
|------------------------------------------------------------------------------------------------------------------------------------------------------------------------------------------------------------------------------------------------------|----------------------|-------------------------------------------------------------------------------------|--------------|
| Set:                                                                                                                                                                                                                                                 | PORT-TYPE            | End User                                                                            | Public       |
| Get:                                                                                                                                                                                                                                                 | PORT-TYPE?           | End User                                                                            | Public       |
| Description                                                                                                                                                                                                                                          |                      | Syntax                                                                              |              |
| Set:                                                                                                                                                                                                                                                 | Change the port type | #PORT-TYPE <sub>[SP]</sub> PortNumber,PortType,PortName,<br>485Term <sub>[CR]</sub> |              |
| Get:                                                                                                                                                                                                                                                 | Get the port type    | #PORT-TYPE? <sub>[SP]</sub> PortNumber <sub>[CR]</sub>                              |              |
| Response                                                                                                                                                                                                                                             |                      |                                                                                     |              |
| ~nn@PORT-TYPE <sub>[SP]</sub> PortNumber,PortType,PortName,485Term <sub>[CR LF]</sub>                                                                                                                                                                |                      |                                                                                     |              |
| Parameters                                                                                                                                                                                                                                           |                      |                                                                                     |              |
| <i>PortNumber</i> – port number: 1-n<br><i>PortType</i> – 0 (RS-232), 1 (RS-232X), 2 (RS-485), 3 (Relay), 4 (IR), 5 (GPIO)<br><i>PortName</i> – A string describing the port type<br><i>485Term</i> – 485 termination state: 1 (enable), 0 (disable) |                      |                                                                                     |              |
| Response Triggers                                                                                                                                                                                                                                    |                      |                                                                                     |              |
|                                                                                                                                                                                                                                                      |                      |                                                                                     |              |
| Notes                                                                                                                                                                                                                                                |                      |                                                                                     |              |
| <i>485Term</i> is effective only when the port type is UART                                                                                                                                                                                          |                      |                                                                                     |              |
| K-Config Example                                                                                                                                                                                                                                     |                      |                                                                                     |              |
| Change port 3 to relay and name it blinds:<br>"#PORT-TYPE 3,3,blinds",0x0D                                                                                                                                                                           |                      |                                                                                     |              |

### 11.3.37 PROT-VER

| Functions                                                       |                             | Permission             | Transparency |
|-----------------------------------------------------------------|-----------------------------|------------------------|--------------|
| Set:                                                            | -                           | -                      | -            |
| Get:                                                            | PROT-VER?                   | End User               | Public       |
| Description                                                     |                             | Syntax                 |              |
| Set:                                                            | -                           | -                      |              |
| Get:                                                            | Get device protocol version | #PROT-VER? <b>[CR]</b> |              |
| Response                                                        |                             |                        |              |
| ~ <b>[nn]</b> @PROT-VER <b>[SE]</b> 3000:version <b>[CR LF]</b> |                             |                        |              |
| Parameters                                                      |                             |                        |              |
| version - XX.XX where X is a decimal digit                      |                             |                        |              |
| Response Triggers                                               |                             |                        |              |
|                                                                 |                             |                        |              |
| Notes                                                           |                             |                        |              |
|                                                                 |                             |                        |              |
| K-Config Example                                                |                             |                        |              |
| "#PROT-VER?", 0x0D                                              |                             |                        |              |

### 11.3.38 RELAY-STATE

| Functions                                                                 |                 | Permission                                                  | Transparency |
|---------------------------------------------------------------------------|-----------------|-------------------------------------------------------------|--------------|
| Set:                                                                      | RELAY-STATE     | End User                                                    | Public       |
| Get:                                                                      | RELAY-STATE?    | End User                                                    | Public       |
| Description                                                               |                 | Syntax                                                      |              |
| Set:                                                                      | Set relay state | #RELAY-STATE <b>[SP]</b> RelayNumber,RelayState <b>[CR]</b> |              |
| Get:                                                                      | Get relay state | #RELAY-STATE? <b>[SP]</b> RelayNumber <b>[CR]</b>           |              |
| Response                                                                  |                 |                                                             |              |
| ~ <b>[nn]</b> @RELAY-STATE <b>[SP]</b> RelayNum,RelayState <b>[CR LF]</b> |                 |                                                             |              |
| Parameters                                                                |                 |                                                             |              |
| RelayNumber - relay number: 1-2                                           |                 |                                                             |              |
| RelayState - relay state: 0 (open), 1 (close)                             |                 |                                                             |              |
| Response Triggers                                                         |                 |                                                             |              |
|                                                                           |                 |                                                             |              |
| Notes                                                                     |                 |                                                             |              |
|                                                                           |                 |                                                             |              |
| K-Config Example                                                          |                 |                                                             |              |
| Close relay 2:<br>"#RELAY-STATE 2, 1", 0x0D                               |                 |                                                             |              |

### 11.3.39 RESET

| Functions                                                                                                                                                                                                |              | Permission             | Transparency |
|----------------------------------------------------------------------------------------------------------------------------------------------------------------------------------------------------------|--------------|------------------------|--------------|
| Set:                                                                                                                                                                                                     | RESET        | Administrator          | Public       |
| Get:                                                                                                                                                                                                     | -            | -                      | -            |
| Description                                                                                                                                                                                              |              | Syntax                 |              |
| Set:                                                                                                                                                                                                     | Reset device | #RESET <code>CR</code> |              |
| Get:                                                                                                                                                                                                     | -            | -                      |              |
| Response                                                                                                                                                                                                 |              |                        |              |
| ~ <code>nn</code> @RESET <code>SE</code> OK <code>CR LF</code>                                                                                                                                           |              |                        |              |
| Parameters                                                                                                                                                                                               |              |                        |              |
|                                                                                                                                                                                                          |              |                        |              |
| Response Triggers                                                                                                                                                                                        |              |                        |              |
|                                                                                                                                                                                                          |              |                        |              |
| Notes                                                                                                                                                                                                    |              |                        |              |
| To avoid locking the port due to a USB bug in Windows, disconnect USB connections immediately after running this command. If the port was locked, disconnect and reconnect the cable to reopen the port. |              |                        |              |
| K-Config Example                                                                                                                                                                                         |              |                        |              |
| "#RESET", 0x0D                                                                                                                                                                                           |              |                        |              |

### 11.3.40 SECUR

| Functions                                                                      |                            | Permission                  | Transparency |
|--------------------------------------------------------------------------------|----------------------------|-----------------------------|--------------|
| Set:                                                                           | SECUR                      | Administrator               | Public       |
| Get:                                                                           | SECUR?                     | Not Secure                  | Public       |
| Description                                                                    |                            | Syntax                      |              |
| Set:                                                                           | Start/stop security        | #SECUR[SP]security_mode[CR] |              |
| Get:                                                                           | Get current security state | #SECUR?[CR]                 |              |
| Response                                                                       |                            |                             |              |
| ~[nn]@SECUR[SP]security_mode[CR LF]                                            |                            |                             |              |
| Parameters                                                                     |                            |                             |              |
| security_mode – 1 (On / enable security), 0 (Off / disable security)           |                            |                             |              |
| Response Triggers                                                              |                            |                             |              |
|                                                                                |                            |                             |              |
| Notes                                                                          |                            |                             |              |
| The permission system works only if security is enabled with the SECUR command |                            |                             |              |
| K-Config Example                                                               |                            |                             |              |
| Enable the permission system:<br>"#SECUR 0",0x0D                               |                            |                             |              |

### 11.3.41 SN

| Functions                                                                       |                          | Permission | Transparency |
|---------------------------------------------------------------------------------|--------------------------|------------|--------------|
| Set:                                                                            | -                        | -          | -            |
| Get:                                                                            | SN?                      | End User   | Public       |
| Description                                                                     |                          | Syntax     |              |
| Set:                                                                            | -                        | -          |              |
| Get:                                                                            | Get device serial number | #SN?[CR]   |              |
| Response                                                                        |                          |            |              |
| ~[nn]@SN[SP]serial_number[CR LF]                                                |                          |            |              |
| Parameters                                                                      |                          |            |              |
| serial_number – 11 decimal digits, factory assigned                             |                          |            |              |
| Response Triggers                                                               |                          |            |              |
|                                                                                 |                          |            |              |
| Notes                                                                           |                          |            |              |
| This device has a 14 digit serial number, only the last 11 digits are displayed |                          |            |              |
| K-Config Example                                                                |                          |            |              |
| "#SN?",0x0D                                                                     |                          |            |              |



### 11.3.42 TIME

| Functions                                                                                                                                           |                          | Permission                         | Transparency |
|-----------------------------------------------------------------------------------------------------------------------------------------------------|--------------------------|------------------------------------|--------------|
| Set:                                                                                                                                                | TIME                     | Administrator                      | Public       |
| Get:                                                                                                                                                | TIME?                    | End User                           | Public       |
| Description                                                                                                                                         |                          | Syntax                             |              |
| Set:                                                                                                                                                | Set device time and date | #TIME[SP]day_of_week,date,time[CR] |              |
| Get:                                                                                                                                                | Get device time and date | #TIME?[CR]                         |              |
| Response                                                                                                                                            |                          |                                    |              |
| ~nn@TIME[SP]day_of_week,date,time[CR LF]                                                                                                            |                          |                                    |              |
| Parameters                                                                                                                                          |                          |                                    |              |
| <i>day_of_week</i> – one of: SUN, MON, TUE, WED, THU, FRI, SAT<br><i>date</i> – format: DD-MM-YYYY<br><i>time</i> – format: hh:mm:ss                |                          |                                    |              |
| Response Triggers                                                                                                                                   |                          |                                    |              |
|                                                                                                                                                     |                          |                                    |              |
| Notes                                                                                                                                               |                          |                                    |              |
| The year must be 4 digits<br>The device does not validate the day of week from the date<br>Time format – 24 hours<br>Date format – Day, Month, Year |                          |                                    |              |
| K-Config Example                                                                                                                                    |                          |                                    |              |
| Set the time to 09:45, Tuesday, 01-July-2015:<br>"#TIME TUE,01-07-2015,09:45:00",0x0D                                                               |                          |                                    |              |

### 11.3.43 TIME-LOC

| Functions                                                                                                                                                                                                                                        |                                    | Permission                        | Transparency |
|--------------------------------------------------------------------------------------------------------------------------------------------------------------------------------------------------------------------------------------------------|------------------------------------|-----------------------------------|--------------|
| Set:                                                                                                                                                                                                                                             | TIME-LOC                           | End User                          | Public       |
| Get:                                                                                                                                                                                                                                             | TIME-LOC?                          | End User                          | Public       |
| Description                                                                                                                                                                                                                                      |                                    | Syntax                            |              |
| Set:                                                                                                                                                                                                                                             | Set local time offset from UTC/GMT | #TIME-LOC[SP]UTC_off,DayLight[CR] |              |
| Get:                                                                                                                                                                                                                                             | Get local time offset from UTC/GMT | #TIME-LOC?[CR]                    |              |
| Response                                                                                                                                                                                                                                         |                                    |                                   |              |
| ~nn@TIME-LOC[SP]UTC_off,DayLight[CR LF]                                                                                                                                                                                                          |                                    |                                   |              |
| Parameters                                                                                                                                                                                                                                       |                                    |                                   |              |
| <i>UTC_off</i> – offset of device time from UTC/GMT (without daylight time correction)<br><i>DayLight</i> – 0 (no daylight saving time), 1 (daylight saving time)                                                                                |                                    |                                   |              |
| Response Triggers                                                                                                                                                                                                                                |                                    |                                   |              |
|                                                                                                                                                                                                                                                  |                                    |                                   |              |
| Notes                                                                                                                                                                                                                                            |                                    |                                   |              |
| If the time server is configured, device time calculates by adding UTC_off to UTC time (that it got from the time server) + 1 hour if daylight savings time is in effect<br>TIME command sets the device time without considering these settings |                                    |                                   |              |
| K-Config Example                                                                                                                                                                                                                                 |                                    |                                   |              |
| Set the time offset to GMT +2, standard time:<br>"#TIME-LOC 2,0",0x0D                                                                                                                                                                            |                                    |                                   |              |

### 11.3.44 TIME-SRV

| Functions                                                                                                                                                                           |                 | Permission                                                                        | Transparency |
|-------------------------------------------------------------------------------------------------------------------------------------------------------------------------------------|-----------------|-----------------------------------------------------------------------------------|--------------|
| Set:                                                                                                                                                                                | TIME-SRV        | Administrator                                                                     | Public       |
| Get:                                                                                                                                                                                | TIME-SRV?       | End User                                                                          | Public       |
| Description                                                                                                                                                                         |                 | Syntax                                                                            |              |
| Set:                                                                                                                                                                                | Set time server | #TIME-SRV <b>SP</b><br><i>mode,time_server_IP,time_server_Sync_Hour</i> <b>CR</b> |              |
| Get:                                                                                                                                                                                | Get time server | #TIME-SRV? <b>CR</b>                                                              |              |
| Response                                                                                                                                                                            |                 |                                                                                   |              |
| ~ <b>nn</b> @TIME-SRV <b>SP</b> <i>mode,time_server_IP, time_server_Sync_Hour,server_status</i> <b>CR LF</b>                                                                        |                 |                                                                                   |              |
| Parameters                                                                                                                                                                          |                 |                                                                                   |              |
| <i>mode</i> – 0 (off), 1 (on)<br><i>time_server_IP</i> – time server IP address<br><i>time_server_Sync_Hour</i> – hour in day for time server sync<br><i>server_status</i> – ON/OFF |                 |                                                                                   |              |
| Response Triggers                                                                                                                                                                   |                 |                                                                                   |              |
|                                                                                                                                                                                     |                 |                                                                                   |              |
| Notes                                                                                                                                                                               |                 |                                                                                   |              |
| This command is needed for setting UDP timeout for the current client list                                                                                                          |                 |                                                                                   |              |
| K-Config Example                                                                                                                                                                    |                 |                                                                                   |              |
| Connect the device to a time server at a given IP address, activate and sync at 6AM:<br>"#TIME-SRV 1,xxx.xxx.xxx.xxx,06",0x0D                                                       |                 |                                                                                   |              |

### 11.3.45 UART

| Functions                                                                                                                                                                                                                                                                                                                                       |                                                                                       | Permission                                                  | Transparency |
|-------------------------------------------------------------------------------------------------------------------------------------------------------------------------------------------------------------------------------------------------------------------------------------------------------------------------------------------------|---------------------------------------------------------------------------------------|-------------------------------------------------------------|--------------|
| Set:                                                                                                                                                                                                                                                                                                                                            | UART                                                                                  | Administrator                                               | Public       |
| Get:                                                                                                                                                                                                                                                                                                                                            | UART?                                                                                 | End User                                                    | Public       |
| Description                                                                                                                                                                                                                                                                                                                                     |                                                                                       | Syntax                                                      |              |
| Set:                                                                                                                                                                                                                                                                                                                                            | Set com port configuration                                                            | #UART[SE]<br>COM_Num,baud_rate,data_bit,parity,stop_bit[CR] |              |
| Get:                                                                                                                                                                                                                                                                                                                                            | Get com port configuration                                                            | #UART?[SE]COM_Num[CR]                                       |              |
| Response                                                                                                                                                                                                                                                                                                                                        |                                                                                       |                                                             |              |
| Set:                                                                                                                                                                                                                                                                                                                                            | ~[nn]@UART[SE]COM_Num,baud_rate,data_bit,parity,stop_bit[CR Lf]                       |                                                             |              |
| Get:                                                                                                                                                                                                                                                                                                                                            | ~[nn]@UART[SE]COM_Num,baud_rate,data_bit,parity,stop_bit,serial1_type,485_term[CR Lf] |                                                             |              |
| Parameters                                                                                                                                                                                                                                                                                                                                      |                                                                                       |                                                             |              |
| <p>COM_Num - 1-2<br/>           baud_rate - 9600-115200<br/>           data_bit - 7-8<br/>           parity - N (none), O (odd), E (even), M (mark), S (space)<br/>           stop_bit - 1-2<br/>           serial1_type - 0 (RS-232), 1 (RS-485)<br/>           485_term - 1/0 (optional - this exists exist only when serial1_type = 485)</p> |                                                                                       |                                                             |              |
| Response Triggers                                                                                                                                                                                                                                                                                                                               |                                                                                       |                                                             |              |
|                                                                                                                                                                                                                                                                                                                                                 |                                                                                       |                                                             |              |
| Notes                                                                                                                                                                                                                                                                                                                                           |                                                                                       |                                                             |              |
| <p>In NT-52P the serial port is selectable to RS-232 or RS-485 (usually serial port 1).<br/>           If Serial1 is configured when RS-485 is selected, the RS-485 UART port is automatically changed</p>                                                                                                                                      |                                                                                       |                                                             |              |
| K-Config Example                                                                                                                                                                                                                                                                                                                                |                                                                                       |                                                             |              |
| <p>Configure RS-232 com port 1 to 9600 baud, 8 data bits, no parity, 1 stop bit:<br/>           "#UART 1,9600,8,N,1,0"0x0D</p>                                                                                                                                                                                                                  |                                                                                       |                                                             |              |

### 11.3.46 VERSION

| Functions                                                                                  |                             | Permission          | Transparency |
|--------------------------------------------------------------------------------------------|-----------------------------|---------------------|--------------|
| Set:                                                                                       | -                           | -                   | -            |
| Get:                                                                                       | VERSION?                    | End User            | Public       |
| Description                                                                                |                             | Syntax              |              |
| Set:                                                                                       | -                           | -                   |              |
| Get:                                                                                       | Get firmware version number | #VERSION? <b>CR</b> |              |
| Response                                                                                   |                             |                     |              |
| ~nn@VERSION <b>SF</b> firmware_version <b>CR LF</b>                                        |                             |                     |              |
| Parameters                                                                                 |                             |                     |              |
| <i>firmware_version</i> – XX.XX.XXXX where the digit groups are: major.minor.build version |                             |                     |              |
| Response Triggers                                                                          |                             |                     |              |
|                                                                                            |                             |                     |              |
| Notes                                                                                      |                             |                     |              |
|                                                                                            |                             |                     |              |
| K-Config Example                                                                           |                             |                     |              |
| "#VERSION?",0x0D                                                                           |                             |                     |              |

## LIMITED WARRANTY

The warranty obligations of Kramer Electronics for this product are limited to the terms set forth below:

### What is Covered

This limited warranty covers defects in materials and workmanship in this product.

### What is Not Covered

This limited warranty does not cover any damage, deterioration or malfunction resulting from any alteration, modification, improper or unreasonable use or maintenance, misuse, abuse, accident, neglect, exposure to excess moisture, fire, improper packing and shipping (such claims must be presented to the carrier), lightning, power surges, or other acts of nature. This limited warranty does not cover any damage, deterioration or malfunction resulting from the installation or removal of this product from any installation, any unauthorized tampering with this product, any repairs attempted by anyone unauthorized by Kramer Electronics to make such repairs, or any other cause which does not relate directly to a defect in materials and/or workmanship of this product. This limited warranty does not cover cartons, equipment enclosures, cables or accessories used in conjunction with this product.

Without limiting any other exclusion herein, Kramer Electronics does not warrant that the product covered hereby, including, without limitation, the technology and/or integrated circuit(s) included in the product, will not become obsolete or that such items are or will remain compatible with any other product or technology with which the product may be used.

### How Long Does this Coverage Last

Seven years as of this printing; please check our Web site for the most current and accurate warranty information.

### Who is Covered

Only the original purchaser of this product is covered under this limited warranty. This limited warranty is not transferable to subsequent purchasers or owners of this product.

### What Kramer Electronics will do

Kramer Electronics will, at its sole option, provide one of the following three remedies to whatever extent it shall deem necessary to satisfy a proper claim under this limited warranty:

1. Elect to repair or facilitate the repair of any defective parts within a reasonable period of time, free of any charge for the necessary parts and labor to complete the repair and restore this product to its proper operating condition. Kramer Electronics will also pay the shipping costs necessary to return this product once the repair is complete.
2. Replace this product with a direct replacement or with a similar product deemed by Kramer Electronics to perform substantially the same function as the original product.
3. Issue a refund of the original purchase price less depreciation to be determined based on the age of the product at the time remedy is sought under this limited warranty.

### What Kramer Electronics will not do Under This Limited Warranty

If this product is returned to Kramer Electronics or the authorized dealer from which it was purchased or any other party authorized to repair Kramer Electronics products, this product must be insured during shipment, with the insurance and shipping charges prepaid by you. If this product is returned uninsured, you assume all risks of loss or damage during shipment. Kramer Electronics will not be responsible for any costs related to the removal or re-installation of this product from or into any installation. Kramer Electronics will not be responsible for any costs related to any setting up this product, any adjustment of user controls or any programming required for a specific installation of this product.

### How to Obtain a Remedy under this Limited Warranty

To obtain a remedy under this limited warranty, you must contact either the authorized Kramer Electronics reseller from whom you purchased this product or the Kramer Electronics office nearest you. For a list of authorized Kramer Electronics resellers and/or Kramer Electronics authorized service providers, please visit our web site at [www.kramerelectronics.com](http://www.kramerelectronics.com) or contact the Kramer Electronics office nearest you.

In order to pursue any remedy under this limited warranty, you must possess an original, dated receipt as proof of purchase from an authorized Kramer Electronics reseller. If this product is returned under this limited warranty, a return authorization number, obtained from Kramer Electronics, will be required. You may also be directed to an authorized reseller or a person authorized by Kramer Electronics to repair the product.

If it is decided that this product should be returned directly to Kramer Electronics, this product should be properly packed, preferably in the original carton, for shipping. Cartons not bearing a return authorization number will be refused.

### Limitation on Liability

THE MAXIMUM LIABILITY OF KRAMER ELECTRONICS UNDER THIS LIMITED WARRANTY SHALL NOT EXCEED THE ACTUAL PURCHASE PRICE PAID FOR THE PRODUCT. TO THE MAXIMUM EXTENT PERMITTED BY LAW, KRAMER ELECTRONICS IS NOT RESPONSIBLE FOR DIRECT, SPECIAL, INCIDENTAL OR CONSEQUENTIAL DAMAGES RESULTING FROM ANY BREACH OF WARRANTY OR CONDITION, OR UNDER ANY OTHER LEGAL THEORY. Some countries, districts or states do not allow the exclusion or limitation of relief, special, incidental, consequential or indirect damages, or the limitation of liability to specified amounts, so the above limitations or exclusions may not apply to you.

### Exclusive Remedy

TO THE MAXIMUM EXTENT PERMITTED BY LAW, THIS LIMITED WARRANTY AND THE REMEDIES SET FORTH ABOVE ARE EXCLUSIVE AND IN LIEU OF ALL OTHER WARRANTIES, REMEDIES AND CONDITIONS, WHETHER ORAL OR WRITTEN, EXPRESS OR IMPLIED. TO THE MAXIMUM EXTENT PERMITTED BY LAW, KRAMER ELECTRONICS SPECIFICALLY DISCLAIMS ANY AND ALL IMPLIED WARRANTIES, INCLUDING, WITHOUT LIMITATION, WARRANTIES OF MERCHANTABILITY AND FITNESS FOR A PARTICULAR PURPOSE. IF KRAMER ELECTRONICS CANNOT LAWFULLY DISCLAIM OR EXCLUDE IMPLIED WARRANTIES UNDER APPLICABLE LAW, THEN ALL IMPLIED WARRANTIES COVERING THIS PRODUCT, INCLUDING WARRANTIES OF MERCHANTABILITY AND FITNESS FOR A PARTICULAR PURPOSE, SHALL APPLY TO THIS PRODUCT AS PROVIDED UNDER APPLICABLE LAW.

IF ANY PRODUCT TO WHICH THIS LIMITED WARRANTY APPLIES IS A "CONSUMER PRODUCT" UNDER THE MAGNUSON-MOSS WARRANTY ACT (15 U.S.C.A. §2301, ET SEQ.) OR OTHER APPLICABLE LAW, THE FOREGOING DISCLAIMER OF IMPLIED WARRANTIES SHALL NOT APPLY TO YOU, AND ALL IMPLIED WARRANTIES ON THIS PRODUCT, INCLUDING WARRANTIES OF MERCHANTABILITY AND FITNESS FOR THE PARTICULAR PURPOSE, SHALL APPLY AS PROVIDED UNDER APPLICABLE LAW.

### Other Conditions

This limited warranty gives you specific legal rights, and you may have other rights which vary from country to country or state to state.

This limited warranty is void if (i) the label bearing the serial number of this product has been removed or defaced, (ii) the product is not distributed by Kramer Electronics or (iii) this product is not purchased from an authorized Kramer Electronics reseller. If you are unsure whether a reseller is an authorized Kramer Electronics reseller, please visit our Web site at [www.kramerelectronics.com](http://www.kramerelectronics.com) or contact a Kramer Electronics office from the list at the end of this document.

Your rights under this limited warranty are not diminished if you do not complete and return the product registration form or complete and submit the online product registration form. Kramer Electronics thanks you for purchasing a Kramer Electronics product. We hope it will give you years of satisfaction.

# KRAMER



## SAFETY WARNING

Disconnect the unit from the power supply before opening and servicing

For the latest information on our products and a list of Kramer distributors, visit our Web site to find updates to this user manual.

We welcome your questions, comments, and feedback.

[www.KramerAV.com](http://www.KramerAV.com)  
[info@KramerAV.com](mailto:info@KramerAV.com)