

Key Features

- WUXGA 1920 x 1200
- 5,000 ANSI Lumens Brightness
- Laser Phosphor Light Source
- 20,000 : 1 contrast ratio
- 20,000 hours expected light source
- 360° Installation
- Suitable for Heavy Usage, Digital Signage and 24/7 Applications
- Maintenance Free!
- Four Digital Inputs: HDBaseT™, HDMI x 3
- Supports Web Control, PJLink, Crestron Roomview, AMX



Dukane expands solid state projector line with a 5,000 ANSI lumens, 1-chip DLP model delivering larger-than-life performance.

Dukane's solid state light source projector line now includes the laser light source model 8965WUSS with 5,000 ANSI lumens. The new laser diode light source offers approximately 20,000 hours of operation time and is maintenance free, there is no lamp or filter to replace providing a dramatic reduction in total cost of ownership. It can provide 24/7 use for digital signage applications and is a perfect choice for large auditoriums, conference rooms, museums, and concert or stage productions. Plus, 5,000 ANSI lumens brightness and 20,000 : 1 contrast ratio results in a super bright display with outstanding image clarity and uniformity. Always on the cutting-edge of technology, Dukane's 8965WUSS is an HDBaseT™ enabled projector which delivers whole-home and commercial distribution of uncompressed HD multimedia content over a single CAT5e/6 cable. HDBaseT is unique in its ability to provide professional installers with a much simpler and more cost-effective way to transmit uncompressed HD video up to 328 ft. No matter how large the application environment, the 8965WUSS delivers larger-than-life performance. For added peace of mind, Dukane's 8965WUSS is also backed by a generous warranty and our world-class service and support programs.



DUKANE CORP

Audio Visual Products
2900 Dukane Drive, St. Charles, Illinois 60174
Toll-free: 888-245-1966 • Fax: 630-584-5156
E-mail: avsales@dukane.com
www.dukaneav.com

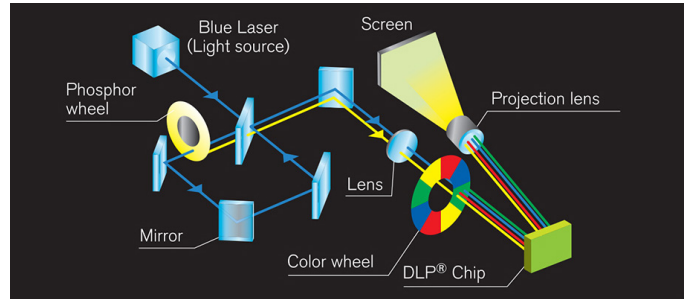


UNIQUE FEATURES

Long Life 20,000 Hours* Laser Light Source

Light source combines blue laser diodes and phosphor which can achieve 5,000 lumens. The projection image is bright and clear, with vivid color. Since lamp exchange is unnecessary, maintenance cost is reduced. No need anymore to worry about lamp life, making it a perfect choice for digital signage applications that require long hours of continuous projection. Plus, by not using mercury lamps, the projectors are eco-friendly. With an approximate light source of 20,000 hours, the laser projector series is suitable for other venues such as museums and restaurants.

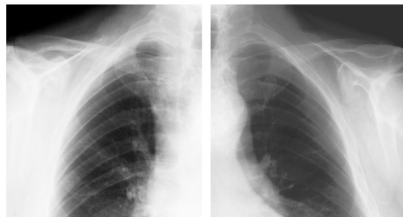
* For laser light source not a guaranteed value.



DICOM® Simulation Mode

The DICOM (Digital Imaging and Communications in Medicine) Simulation Mode projects grayscale images which approximate DICOM Part 14 specifications. This mode is ideal for viewing grayscale medical images, such as X-rays, for training and educational purposes.

The projectors have a DICOM (Digital Imaging and Communications in Medicine) Simulation Mode. This mode simulates the DICOM standard, which is a standard applicable to digital communications in medicine, and is useful for displaying medical images such as X-rays. These projectors are not medical devices and are not compliant with the DICOM standard, and neither the projector nor the DICOM Simulation Mode should be used for medical diagnosis. Comparison photos are simulations.



Maintenance Free Operation



Approximately 20,000 hours of maintenance free operation. There is no need to replace a lamp or air filter, providing a dramatic reduction in the total cost of ownership and time spent changing bulbs.

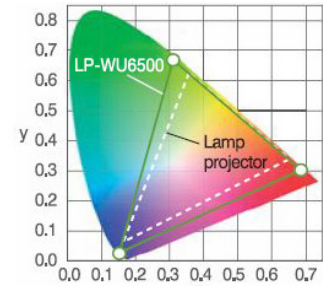
MHL™

MHL (Mobile High-Definition) allows users to mirror their phone/tablet screen with the projector display. It is compatible with any and all apps.



Wide Range of Color Reproduction

The color reproduction range is wide compared to lamp light projectors and projects brilliantly colored images.



Color space comparison between Dukane projectors

Dust Resistant Sealed Engine



The air tight structure of the optical engine makes it possible to minimize dust particles entering which could eventually lead to a decrease in brightness. This construction gives the projector resistance to the effects of dust and enables the projector to be used in a wide variety of environments.

Laser Power Level Control

Tunes the brightness of images according to the brightness of the surrounding environment and can also match brightness of images projected side by side.



Lens Shift

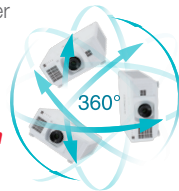
Lens shift can adjust the position of image on the screen by turning the adjusters manually. This adjustment is useful to fit the image to the position without causing keystone distortion.



360° Rotation/Portrait Projection

Display rotation of 360° and portrait projection for creative applications and greater installation flexibility.

360° projection



3D system by DLP Link



A special 3D emitter is no longer needed for 3D viewing.

DUKANE CORP

Audio Visual Products
2900 Dukane Drive, St. Charles, Illinois 60174
Toll-free: 888-245-1966 • Fax: 630-584-5156
E-mail: avsales@dukane.com
www.dukaneav.com

New technology for high brightness and reliability with a lower cost of ownership.

Dukane's 8965WUSS laser projector is truly a technology achievement with premier performance for demanding application environments including large auditoriums, conference rooms, museums and concert or stage productions. It can also provide



24/7 use for digital signage applications. An array of new technology features includes Dust Resistant Sealed Engine, and a more efficient cooling system. Combining 5,000 ANSI lumens with WUXGA 1920 x 1200 resolution, the 1-chip DLP laser light source projector will deliver dynamic images guaranteed to dazzle any audience. All this combined with state-of-the-art connectivity features elevates the 8965WUSS to the forefront in projector performance, reliability and overall quality. The 8965WUSS greatly enhances the overall viewing experience, adding an entirely new dimension and level of excitement. Dukane is the brand name synonymous with advanced projector technology and innovation, and the 8965WUSS lives up to that reputation.



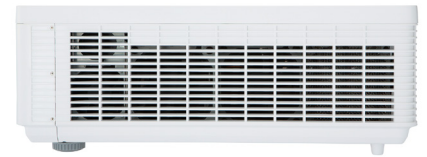
Front View



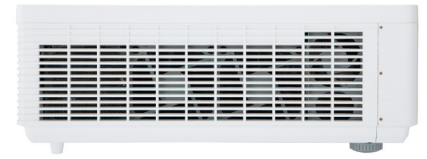
Rear



Top View

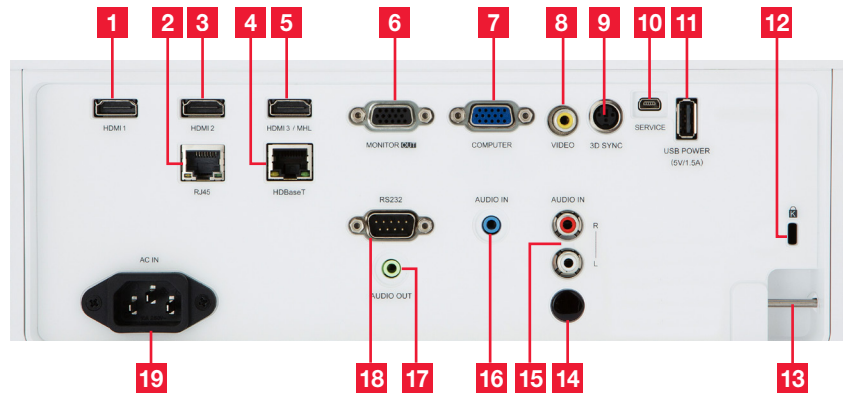


Side Left



Side Right

Input/Outputs



- | | | | |
|---------------|----------------|-------------------------|------------------|
| 1. HDMI 1 | 6. Monitor Out | 11. USB Power (5V/1.5A) | 15. Audio In L/R |
| 2. RJ45 | 7. Computer | 12. Kensington Lock | 16. Audio In |
| 3. HDMI 2 | 8. Video | 13. Security Bar | 17. Audio Out |
| 4. HDBaseT | 9. 3D Sync | 14. Remote Receiver | 18. RS-232C |
| 5. HDMI 3/MHL | 10. Service | | 19. AC In |

DUKANE CORP

Audio Visual Products
 2900 Dukane Drive, St. Charles, Illinois 60174
 Toll-free: 888-245-1966 • Fax: 630-584-5156
 E-mail: avsales@dukane.com
 www.dukaneav.com

8965WUSS

Accessories and Lenses

| | |
|-----------------------------|---------------------------------------------------------|
| Supplied Accessories | Remote control, power cord, AA batteries x 2, RGB cable |
| Replacement Parts | |
| Remote Control | HL03171 |

Projection Throw Chart

| Screen Size | 16:10 | Throw Distance | |
|-------------|-------|----------------|-------|
| | | Diagonal | Width |
| 60 | 51 | 59 | 97 |
| 80 | 68 | 78 | 129 |
| 100 | 85 | 98 | 162 |
| 120 | 102 | 117 | 194 |
| 150 | 127 | 146 | 241 |
| 200 | 170 | 196 | 323 |
| 250 | 212 | 244 | 403 |
| 300 | 254 | 292 | 483 |

Throw Ratio: 1.15 - 1.9 : 1 (distance : width)
Screen size and throw distance are measured in inches.

Specifications

| | | |
|--------------------|----------------------------------------------------------------------------------|-------------------------------------------------------------------------------------------------------------|
| Display | Projection Technology | Single Chip DLP |
| | Resolution | WUXGA 1920 x 1200 |
| | Brightness | 5,000 ANSI lumens |
| | Colors | 1.07 billion colors |
| | Aspect Ratio | Native 16:10. 4:3 and 16:9 compatible |
| | Contrast Ratio | 20,000 : 1 |
| | Throw Ratio (distance : width) | 1.15 -1.9 : 1 |
| Operation | Focus Distance | 59" - 196" |
| | Display Size | 36.7" - 201.9" |
| | Lens | Manual zoom x 1.65, manual focus & lens shift |
| | Expected Light Source Life* | Approximately 20,000 hours |
| Compatibility | Speaker Output | 10W |
| | Keystone | H: +/-25° and V: +/-30° |
| | Computer | VGA, SVGA, XGA, WXGA, WXGA+, SXGA, SXGA+, WSXGA+, UXGA, WUXGA, MAC16", 480p, 576i, 576p, 720p, 1080i, 1080p |
| | H-Sync | 15.0 kHz - 91 kHz |
| | V-Sync | 24 Hz - 85 Hz |
| | Composite Video | NTSC, NTSC4.43, PAL, PAL-M, -N, SECAM |
| | Component Video | 480i, 480p, 576i, 576p, 720p, 1080i, 1080p |
| Connectors | HDMI | 480p, 576p, 720p, 1080i, 1080p Computer signal TMDS clock 27 MHz - 162 MHz |
| | MHL | 480p, 720p, 1080i, 1080p Computer signal TMDS clock 27 MHz - 162 MHz |
| | Digital Input | HDBaseT x 1, HDMI x 3 |
| | Computer Input 1 | 15-pin mini D-sub x 1 (shared with analog component video input) |
| | Computer Monitor Output | 15-pin mini D-sub x 1 |
| | Video Input | |
| | Composite Video | RCA jack x 1 |
| | Component Video | 15-pin mini D-sub x 1 (shared with analog computer input) |
| | Audio Input | 3.5 mm stereo mini jack x 1, 2RCA jack (L/R) x 1 |
| | Audio Output | 2RCA jack (L/R) x 1 |
| | Microphone Input | 3.5 mm mono mini jack |
| | Network (LAN) Wired | RJ-45 jack x 1 |
| | HDBaseT | RJ-45 jack x 1 |
| | USB-A | USB type A x 1 |
| Ratings & Warranty | Control Terminals | 9-pin D-sub x 1 (RS-232 control) |
| | 3D Sync | Mini DIN 3-pin connector x 1 |
| | Power Supply | AC 100V - 130V (50/60Hz) , 5.0A AC 200V - 240V (50/60Hz) , 2.5A |
| | Power Consumption | Normal: 460W |
| | Operating Temperature | 32°F - 95°F (0°C-35°C) Normal mode 32°F - 104° (0°C-40°C) Eco mode |
| | Dimensions (W x D x H) | 14.2" x 17.2" x 5.8" (excluding protruding parts) Shipping 19" x 21" x 9" |
| | Weight | Approximately 23.1 lbs. / Shipping 30 lbs. |
| | Approvals | UL 60950-1 / cUL FCC Part 15 subpart B class A |
| Warranty | Five (5) year limited warranty plus Dukane's 1 year Peace of Mind Loaner Program | |
| UPC | 605194006670 | |

* Actual light source life will vary by individual light source based on environmental conditions, selected operating mode, user settings and usage. Hours of average light source life specified are not guaranteed and do not constitute part of the product or light source warranty. Light source brightness decreases over time.



DUKANE CORP

Audio Visual Products
2900 Dukane Drive, St. Charles, Illinois 60174
Toll-free: 888-245-1966 • Fax: 630-584-5156
E-mail: avsales@dukane.com
www.dukaneav.com

