

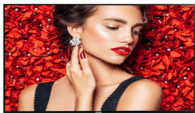


Philips Signage Solutions
D-Line Display

49"

Edge-lit LED
Full HD
450cd/m²

SignageSolutions



49BDL4031D

Inform. Effortlessly.

Smart, powerful 24/7 display.

Make it clear with a powerful Philips D-Line Professional Full HD Display. This responsive solution offers brilliant picture quality, simple control, and reliable connectivity.

Brilliant picture. Blazing processor speed.

- Full HD. Clear images. Crisp contrast
- IPS panel: rich color consistency from every angle
- Place in landscape or portrait orientation

Effortless setup. Total control.

- Operate, monitor and maintain with CMND & Control

Cost-effective system solution

- Energy-saving automatic backlight control
- FailOver ensures content is always playing

PHILIPS

D-Line Display
49" Edge-lit LED, Full HD, 450cd/m²

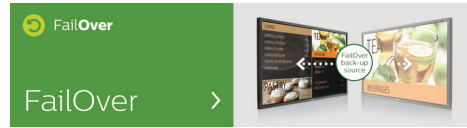
49BDL4031D/00

Highlights

CMND & Control

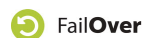
Run your display network over a local (LAN) connection. CMND & Control allows you to perform vital functions like controlling inputs and monitoring display status. Whether you're in charge of one screen or 100.

FailOver



From waiting room to meeting room, never show a blank screen. FailOver lets your Philips

Professional Display switch automatically between primary and secondary inputs ensuring content keeps playing even if the primary source goes down. Simply set a list of alternate inputs to be sure your business is always on.



Specifications

Picture/Display

- Diagonal screen size: 48.5 inch / 123.2 cm
- Panel resolution: 1920x1080p
- Optimum resolution: 1920 x 1080 @ 60Hz
- Brightness: 450 cd/m²
- Contrast ratio (typical): 1100:1
- Dynamic contrast ratio: 500,000:1
- Aspect ratio: 16:9
- Response time (typical): 12 ms
- Pixel pitch: 0.55926 x 0.55926 mm
- Display colors: 16.7 Million
- Viewing angle (H / V): 178 / 178 degree
- Picture enhancement: 3/2 - 2/2 motion pull down, 3D Combfilter, Motion compens. deinterlacing, 3D MA deinterlacing, Progressive scan
- Panel technology: IPS
- Placement: Landscape (24/7), Portrait (24/7)

Connectivity

- Video input: Display Port1.2 (x1), DVI-I (x 1), HDMI (x2)
- Video output: DisplayPort 1.2 (x1), DVI-I (x1)
- Audio input: 3.5 mm jack
- Audio output: 3.5mm jack
- External control: RJ45, RS232C (in/out) 2.5 mm jack, IR (in/out) 3.5 mm jack

Supported Display Resolution

Computer formats

Resolution	Refresh rate
1920 x 1200	60Hz
1920 x 1080	60Hz
1600 x 1200	60Hz
1440 x 900	60Hz
1366 x 768	60Hz
1360 x 768	60Hz
1280 x 800	60Hz
1280 x 768	60Hz
1024 x 768	60Hz
800 x 600	56, 60, 72, 75Hz
640 x 480	60, 67, 72, 75Hz

Video formats

Resolution	Refresh rate
1080p	50, 60Hz
1080i	50, 60Hz

720p	50, 60Hz
576i	50Hz
576p	50Hz
480p	60Hz
480i	60Hz

Dimensions

- Set dimensions in inch (W x H x D): 43.21 x 24.96 x 1.79 inch
- Set dimensions (W x H x D): 1097.6 x 633.9 x 45.5 mm
- Bezel width: 9.6 mm (T/L/R), 15.7 mm (B)
- Product weight (lb): 32.63 lb
- Product weight: 14.8 kg
- VESA Mount: 400 x 400 mm, M6

Convenience

- Tiled Matrix: Up to 15 x 15
- Keyboard control: Hidden, Lockable
- Signal loop through: DisplayPort, IR Looptrough, DVI
- Network controllable: RJ45, RS232
- Screen saving functions: Pixel Shift
- Picture in picture: PIP

Power

- Consumption (On mode): 130W(max)
- Standby power consumption: <0.5 W
- Mains power: AC (100 ~ 240 V) , 2.5A
- Consumption (Typical): 75 W

Operating conditions

- Temperature range (operation): 0 ~ 40 °C
- Temperature range (storage): -10 ~ 50 °C
- Altitude: 0 ~ 3000 m
- MTBF: 50,000 hour(s)
- Humidity range (operation)[RH]: 10 ~ 90% (without condensation)
- Humidity range (storage) [RH]: 0 ~ 100% (without condensation)

Sound

- Built-in speakers: 2 x 10 W RMS

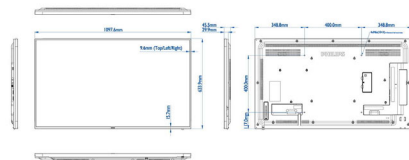
Accessories

- Included accessories: Remote Control, Batteries for remote control, AC Power Cord, Quick start guide, RS232 cable
- Included Accessories: Edge Alignment Kit (1)-2pcs, Edge Alignment Kit (2)-1pcs, M3 screw (x1), RS232 daisy-chain cable, SD card cover (x1), Thumb Screw (x8)
- Stand: BM05922 (Universal Stand-L)(Option)

Miscellaneous

- On-Screen Display Languages: English, French, German, Spanish, Polish, Turkish, Russian, Italian, Simplified Chinese, Traditional Chinese, Japanese, Arabic
- Regulatory approvals: CE, CB, EAC, FCC, Class A, PSB, UL/cUL, EMF, EnergyStar 8.0
- Warranty: 3 year warranty

Philips 49BDL4031D
Version: 1.0
Release Date: 2019/05/27



Issue date 2020-11-04

Version: 5.0.1

12 NC: 8670 001 57451
EAN: 87 12581 75595 9

© 2020 Koninklijke Philips N.V.
All Rights reserved.

Specifications are subject to change without notice.
Trademarks are the property of Koninklijke Philips N.V.
or their respective owners.

www.philips.com